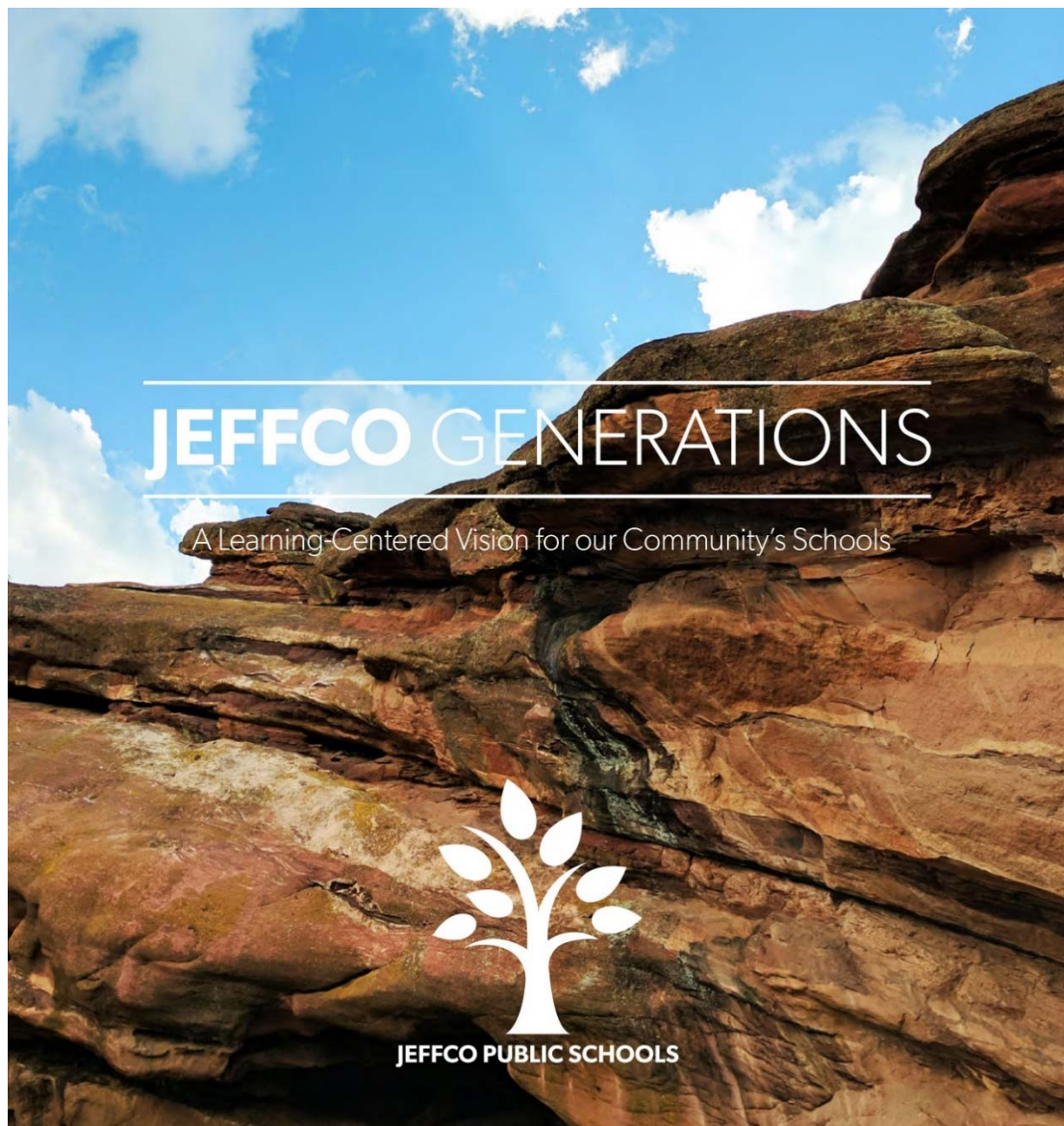


TALKING DOLLARS & SENSE WITH SUPERINTENDENT DR. GLASS



Our Vision

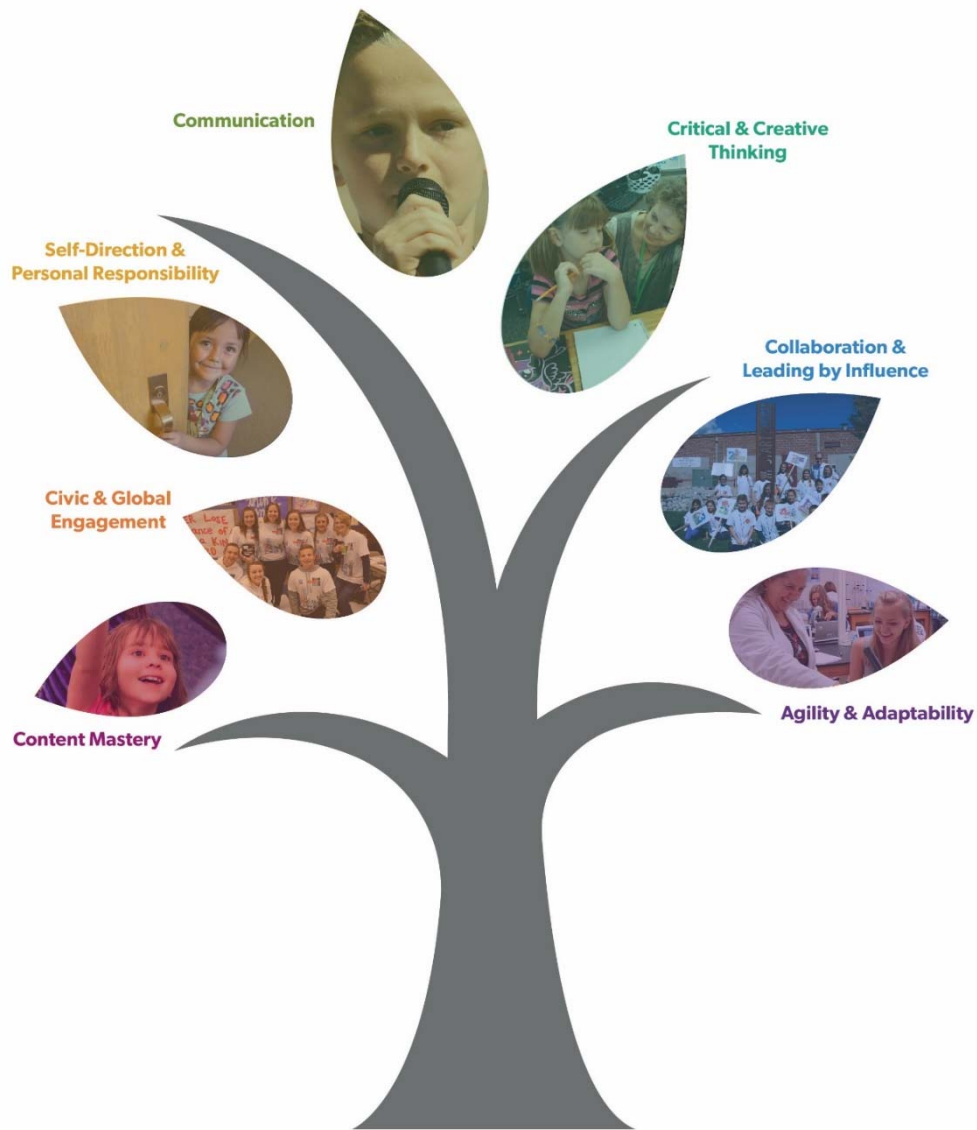


Our Vision

KEY ELEMENTS

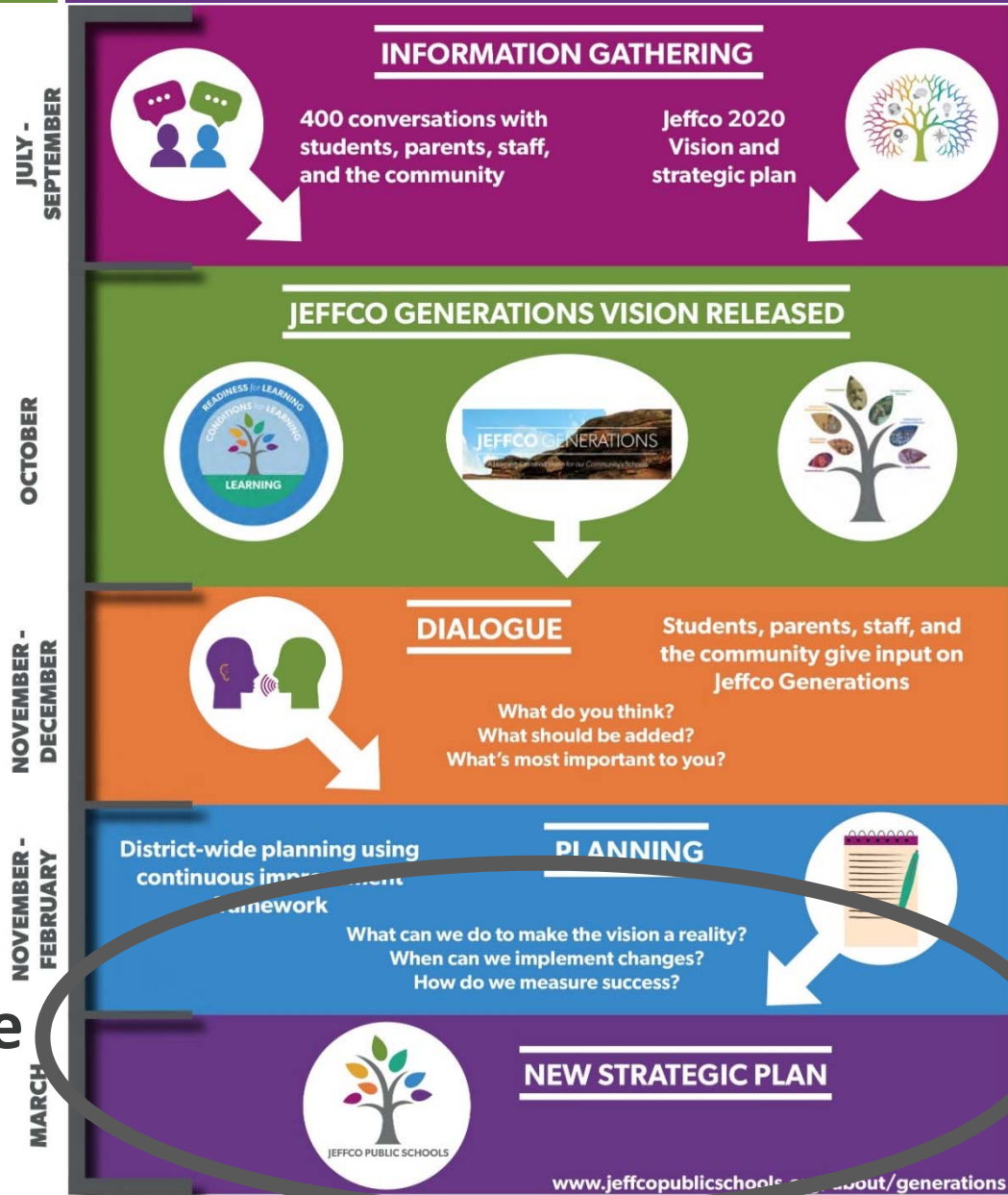
Keep the main thing the main thing...

LEARNING



Our Vision

TIMELINE



We are here





COLORADO SCHOOL FINANCE

CO School Finance

TOTAL PROGRAM Funding

The amount each school district receives through the funding formula prescribed in the *School Finance Act*.

Based on pupil counts and other *“factors”* outlined in the formula plus funding for at-risk and on-line students.

Funded with a *mix of state (income and sales) and local (property) tax*. Each district’s mix can be different.



**Current
school
finance is
legislated
by the state
and was
last revised
in 1994.**

State Formula

COLORADO SCHOOL FINANCE ACT



**Legislated
each year
with a
new bill.**



**Required
to fund
inflation
and
growth.**



**Kindergarten
funded at .58
of an 1.0 FTE.**



CO School Finance

**Base Funding
is adjusted
annually
for inflation**

and adjusted by factors

Cost of living

Budget Stabilization

Personnel & non-personnel costs

Size of district



**BUDGET
STABILIZATION
FACTOR**

Tool used to balance state budget.

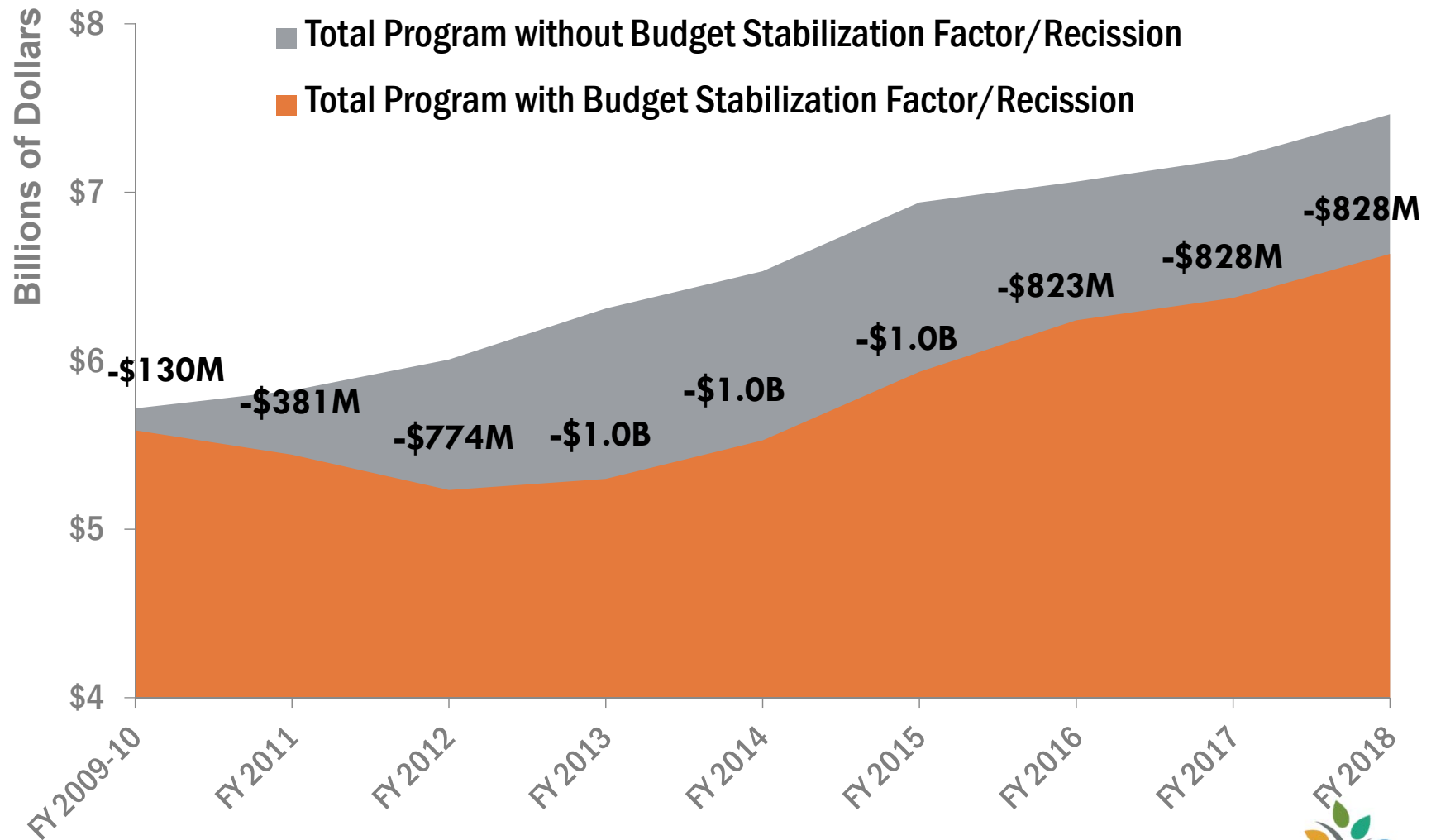
Reduces what would otherwise be funded if School Finance Act was applied as intended.

Implemented in 2009-2010.

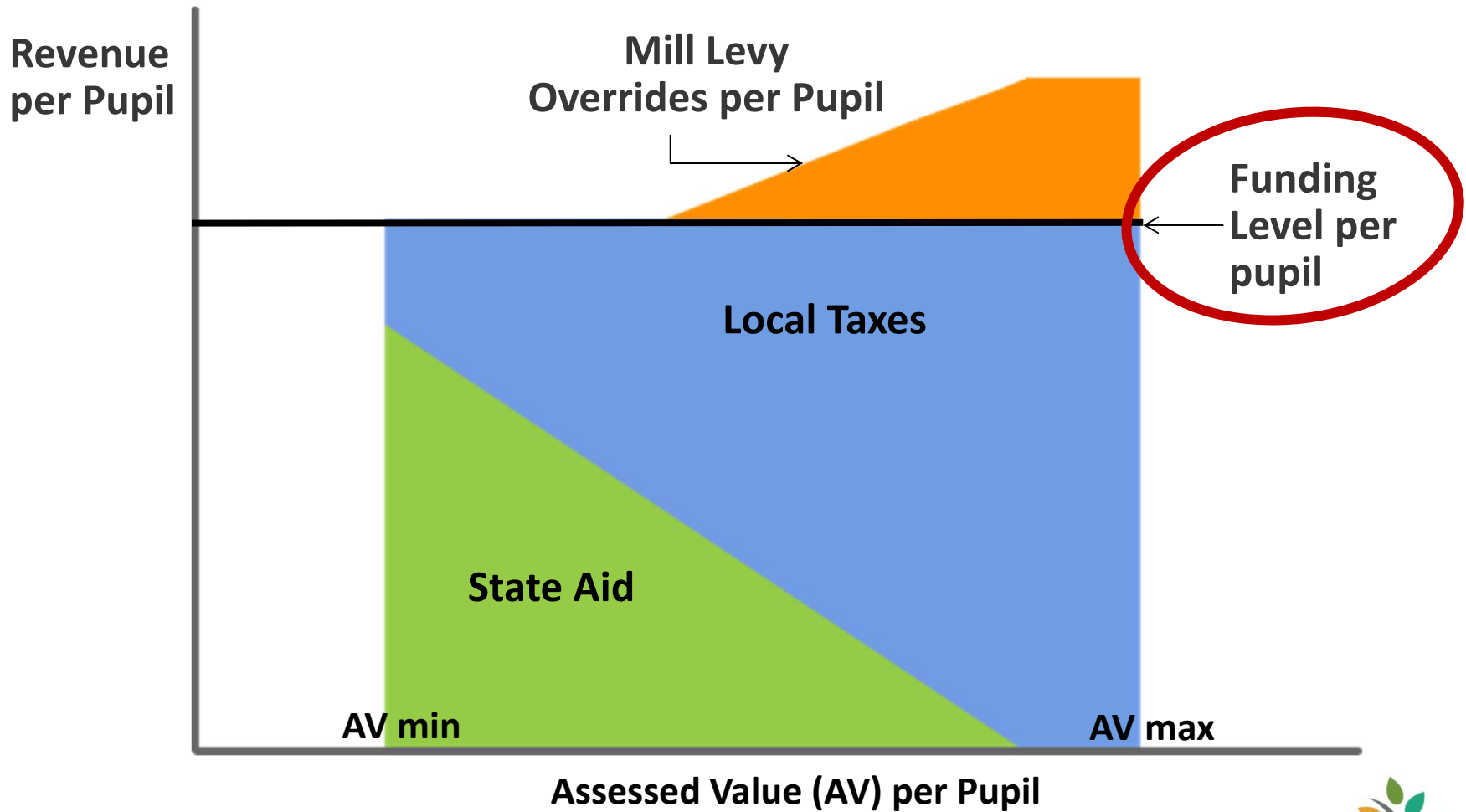
2017-18 is \$828M in total with **\$76M for Jeffco**

CO School Finance

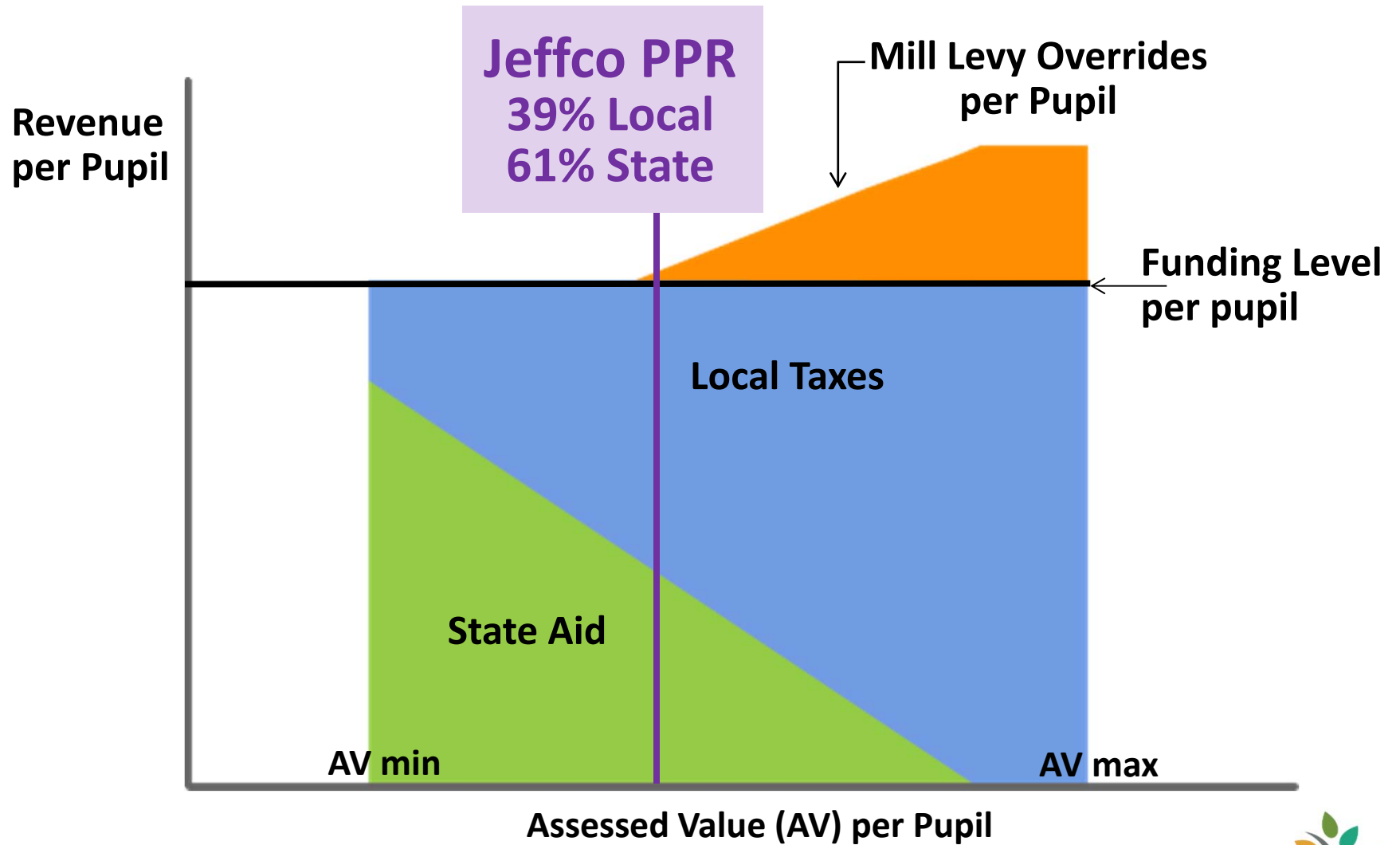
SCHOOL FINANCE Formula



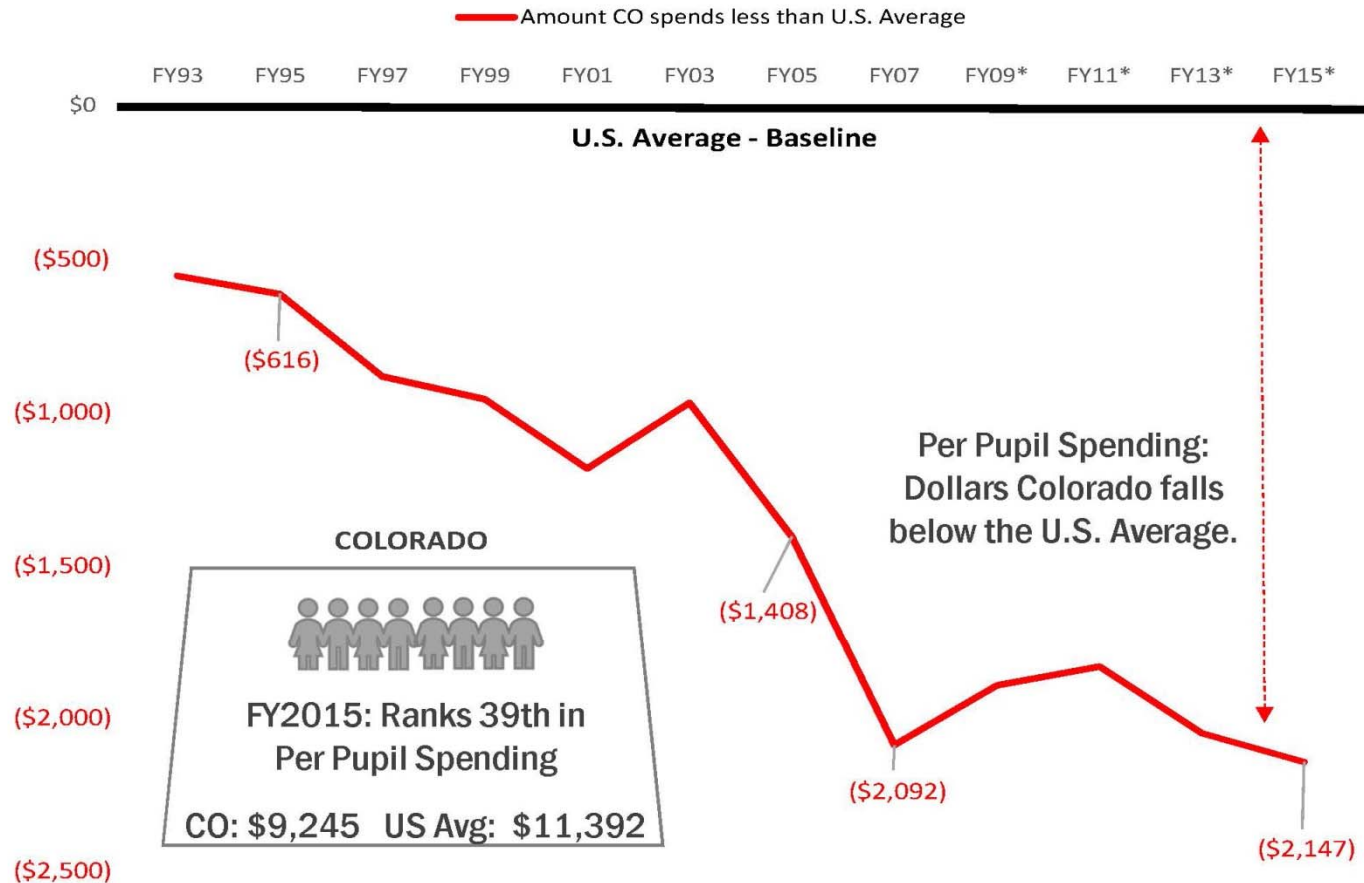
JEFFCO PUBLIC SCHOOLS



WHAT IS Jeffco's split?



Colorado Per Pupil Spending Continues to Fall Further From the U.S. Average



Data: U.S. Census | Chart: Colorado School Finance Project

*Budget Stabilization Factor (formerly Negative Factor)

Source: www.cosfp.org

State	Per Pupil Spending
DC	\$29,949
NY	\$24,116
AK	\$22,338
CT	\$21,484
NJ	\$21,097
WY	\$20,889
VT	\$20,291
MA	\$18,387
PA	\$17,937
RI	\$17,416
US Avg.	\$13,246
CO	\$11,010

Source: US Census Bureau 2015 Public Elementary-Secondary Education Finance Data



Mill Levy Overrides (MLO)

- ▶ MLO is additional revenue outside of the Total Program Formula
- ▶ Limited to 25% of Total Program
- ▶ Is not included in the total for the local share and, therefore, does not affect the amount of state share funding

Capital Projects – Bond Mill levies

- ▶ Proceeds and expenditures from debt authorization in separate capital fund
- ▶ Bond mill revenue flows to debt service fund for repayment of debt

Mill Levy Overrides

1998 – Defeated

1999 – \$35.8 Million (\$45 Million authorized)

2004 – \$38.5 Million

2008 – Defeated

2012 – \$39 Million

2016 – Defeated

TOTAL– \$113.3 Million (set amount)

Note: Mill levies continue unless changed by election.



Bond Levy

1998 – \$265 Million

2004 – \$323.8 Million

2008 – Defeated

2012 – \$99 Million

2016 – Defeated

Note: Bond levies end with repayment of the debt.

District Finance

COMPARISONS to Other Districts

Comparisons Per Pupil Revenue, Mill Levy and Bond

District	# of Students	State Per Pupil Funding 16/17	Mill Levy Override Per Pupil 15/16	Outstanding Bonds Per Pupil 14/15
Denver	91,132	\$7,686	\$2,208	\$15,727
Jeffco	86,347 (2 nd)	\$7,245 (4 th)	\$1,312 (5 th)	\$4,833 (6 th)
Douglas	67,470	\$7,154	\$500	\$5,073
C. Creek	54,815	\$7,387	\$1,980	\$8,360
Boulder	31,189	\$7,351	\$2,152	\$17,964
Littleton	15,517	\$7,146	\$1,857	\$9,132



2018/2019 Budget Development

Governor's Proposal

2018/2019 GOVERNOR'S PROPOSAL REVENUE Assumptions – Revised January 2

Proposed statewide assumptions
per the Governor's Budget Request
released in November (revised in January).

3% inflation – including categorical funding

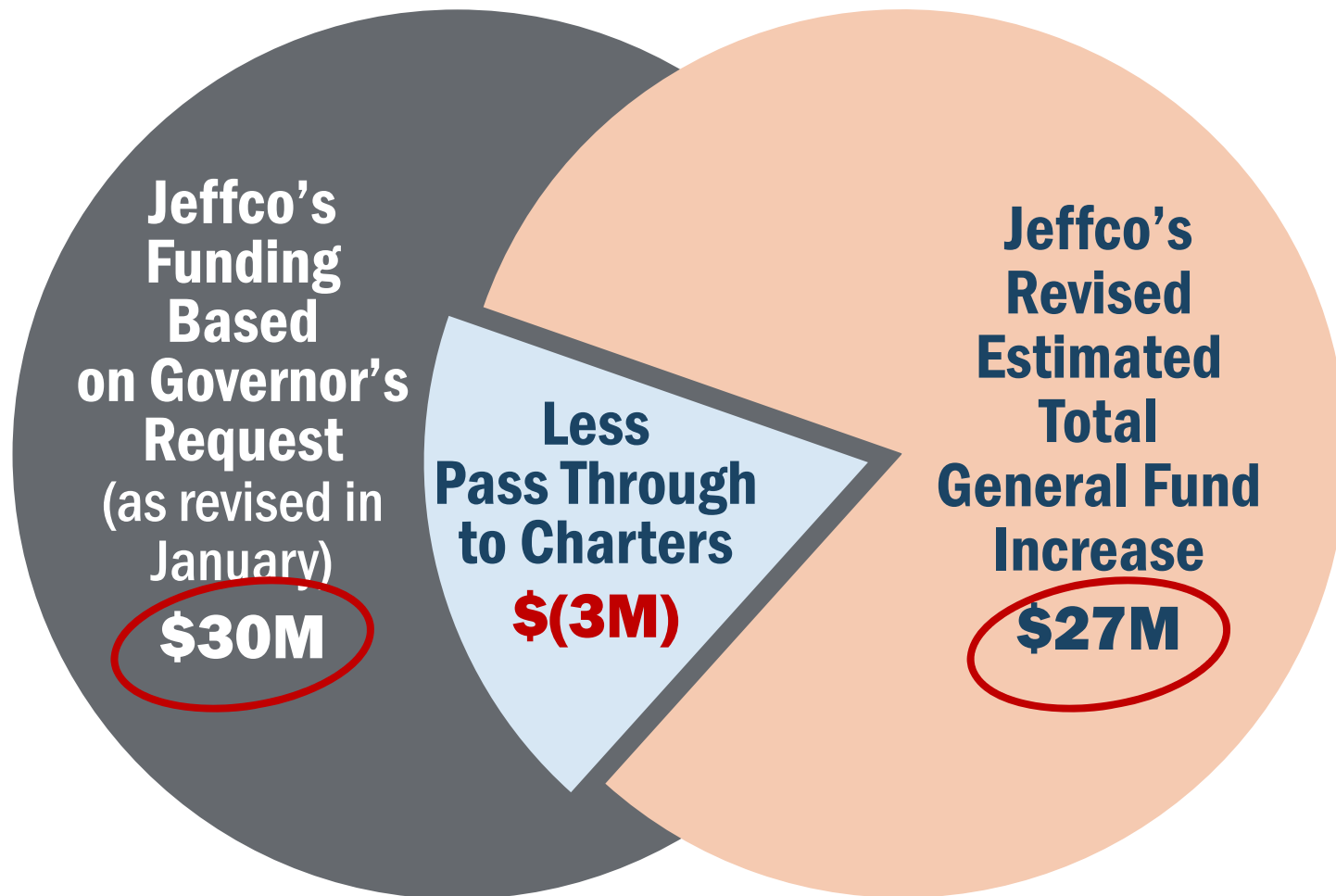
5,759 student enrollment growth

\$100M decrease to budget stabilization
factor statewide



Governor's Proposal

2018/2019 STATE REVENUE Assumptions Jeffco Funding Update



2018/2019 EXPENDITURE Assumptions

- 1 State Actions and/or Mandates
- 2 District Accountability Committee (DAC) Recommendations
- 3 Negotiations
- 4 Cabinet Recommendations



2018/2019 EXPENDITURE Assumptions

1

► State Actions

- PERA changes
- Residential assessment rate changes
- Competing state needs

2

► District Accountability Recommendations

- DUIP support – noted in Cabinet recommendations
- Mental Health/Behavioral Support
- Student based budgeting:
 - Additional classroom teachers
 - Instructional resources
 - Educational programming



2018/2019 EXPENDITURE Assumptions

3

► Negotiations

■ Compensation Variables

- ◆ Steps/Lanes/Quartiles
\$14.8M (w/benefits)
- ◆ Scalable: 1% Cost of Living
\$5.6M (w/benefits)
- ◆ Benefit contributions
for employees covering children
- ◆ Competitive compensation
for specific positions and/or schools



2018/2019 EXPENDITURE Assumptions

4

► Cabinet Recommendations – (prioritized list attached)

- Mandates
- Jeffco Online Enrollment
- High priority requests
(DAC support highlighted in blue)
 - ◆ Strategic plan support
 - ◆ Division needs for increased costs or demands
 - ◆ Facility upkeep and deferred maintenance



District Budget

Billion Dollar Budget - Comparison

District	Total Budget	Enrollment
Fulton County, GA	\$1,546,845,944	95,460
Albuquerque, NM	\$1,341,634,571	93,001
Lee County, FL	\$1,508,771,993	89,364
Denver, CO	\$1,815,472,452	88,839
Prince William, VA	\$1,669,914,920	86,641
Jeffco Public Schools	\$ 978,915,960	86,581
Fort Worth, TX	\$1,191,226,447	85,795
Baltimore City, MD	\$1,455,496,000	84,796
Austin, TX	\$1,459,235,696	84,564
Davidson County, TN	\$1,292,397,700	84,069
Long Beach, CA	\$1,182,020,011	79,709



What action can you take?

If you think K-12 funding is a
priority this year,
here are three actions
to consider...

1

Contact your state senator and representative to let them know

Jeffco is hoping for \$30 million more this year; however, there is no guarantee – our elected officials could opt to give more to other things like transportation and choose not to increase funding for K-12 this year.

Find your legislators at:

<https://leg.colorado.gov/find-my-legislator>



2

Weigh in on whether our district should go to voters to ask for more funding – mill levy, bond, or both ...

Give your input via a google form available from the link below (same as on your handout and on the district's website).

Submit a google form: <https://goo.gl/xXzFSY>



3 Investigate the Great Education Colorado “Great Schools, Thriving Communities” ballot issue

If you think it’s a good option, lend your support.

More information at:

<http://www.greatschoolsthivingcommunities.org>