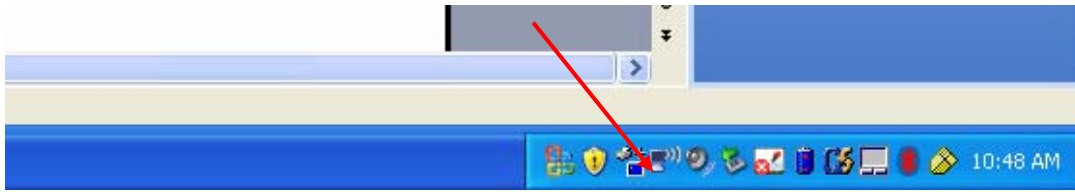


# Connecting to Jeffco-Guest Wireless Internet

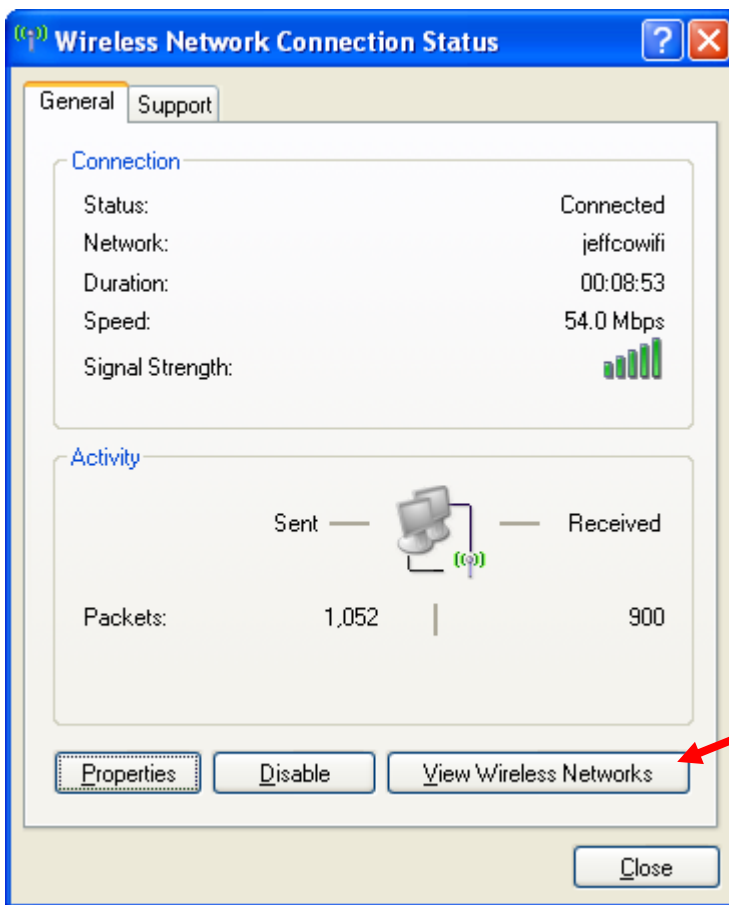
As a guest to Jeffco Public Schools wireless network, these steps will need to be completed each time internet access is required for Board of Education meetings.

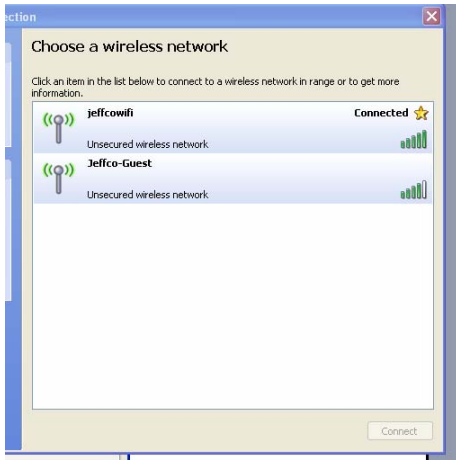
Double click on the Wireless Network Connection Icon in the status bar. It looks like a little computer.



See this screen:

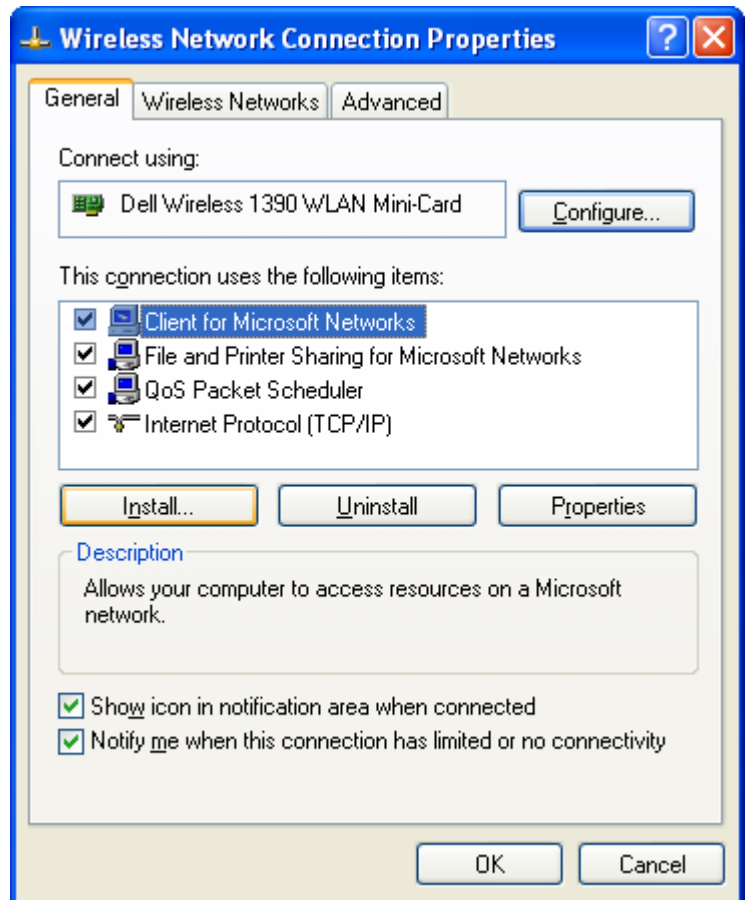
Click on: **View Wireless Networks**.

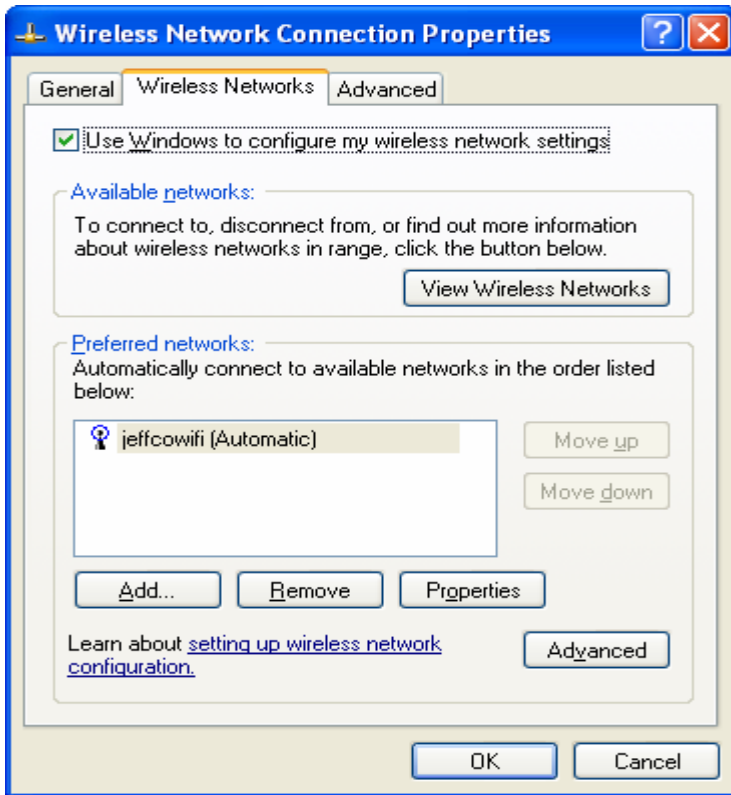




If **jeffcowifi** is shown as Connected, the set up is complete. If **Jeffco-Guest** is shown and does not say Connected, click on it and click on Connect.

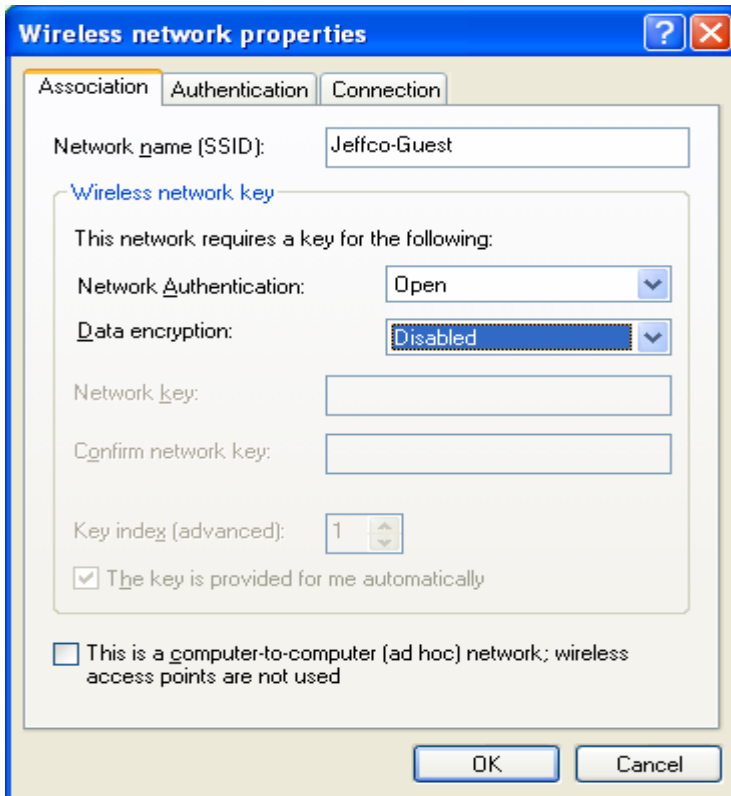
If neither **jeffcowifi** or **Jeffco-Guest** are shown, click on **Change Advanced Settings** (on the left). Then click on the Wireless Networks Tab.





Click on **Add...**

Type in **Jeffco-Guest** in the Network name (SSID) name and choose *Disabled* in the Data encryption box. Click OK.



Wait a bit for the connection to be completed. Hovering over the Network connection icon in the status bar should indicate the wireless network being used for access to the internet and Board of Education agendas.