

SAFETY AND SCHOOL ENVIRONMENT

Non-CSAP Course Offerings

Your School Offers	does	does not
• art.....	<input checked="" type="checkbox"/>	<input type="checkbox"/>
• drama or theater.....	<input type="checkbox"/>	<input checked="" type="checkbox"/>
• music.....	<input checked="" type="checkbox"/>	<input type="checkbox"/>
• physical education.....	<input checked="" type="checkbox"/>	<input type="checkbox"/>
• opportunity for civic or community engagement.....	<input checked="" type="checkbox"/>	<input type="checkbox"/>
• internet safety program.....	<input checked="" type="checkbox"/>	<input type="checkbox"/>
• International Baccalaureate.....	<input type="checkbox"/>	<input checked="" type="checkbox"/>
• extracurricular activities.....	<input checked="" type="checkbox"/>	<input type="checkbox"/>
• athletics.....	<input type="checkbox"/>	<input checked="" type="checkbox"/>
• preschool program.....	<input type="checkbox"/>	<input checked="" type="checkbox"/>
• full-day kindergarten program.....	<input checked="" type="checkbox"/>	<input type="checkbox"/>
• before-and-after-school care program.....	<input checked="" type="checkbox"/>	<input type="checkbox"/>

Safety and Discipline

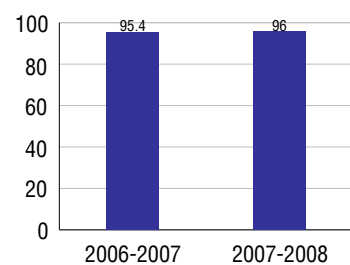
Safe schools are a top priority for parents, teachers, and communities. Your school safety and discipline record for the 2007-2008 school year is:

Type of Incident	Number of Incidents Reported	Percent of Total Incidents
Substance Abuse - Drugs		
Substance Abuse - Alcohol		
Substance Abuse - Tobacco		
Felony Assaults		
Fights		
Possession of Dangerous Weapons	1	12.5%
Other Violations Code of Conduct	7	87.5%

Student Attendance and School Calendar

2007-2008	Your School
Enrollment	588
Average Daily Attendance	564
Student Dropouts	N/A

Attendance Rate



Student Information Over Time

	2005-2006	2006-2007	2007-2008
Student Enrollment Stability	93.5%	95.0%	94.9%
Students Eligible for Free and Reduced Lunch	41.4 %	44.5 %	46.1 %

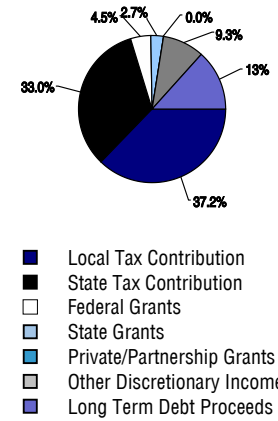
For more information and further details about this report, visit www.state.co.us/schools
 Colorado Department of Education, 201 East Colfax Ave. Denver, CO 80203
Westgate Elementary School
 1420/9412/E
 8550 West Vassar Drive . Lakewood, CO 80227 . 303-982-9088
 10/20/2008

DISTRICT TAXPAYER'S REPORT

Sources of School District Revenue 2007

Local Tax Contribution	\$356,019,175
State Tax Contribution	315,431,843
Federal Grants	42,717,586
State Grants	25,793,428
Private/Partnership Grants	171,807
Other Discretionary Income	89,083,874
Total District Operating Revenue	\$829,217,713
Long Term Debt Proceeds	126,985,259
Total District Revenue	\$956,202,972
Total District Operating Revenue Per Pupil =	\$10,226
Total District Revenue Per Pupil (Including Long Term Debt) =	\$11,792
District Per Pupil Operating Revenue =	\$5,933
State Average Per Pupil Operating Revenue =	\$6,080

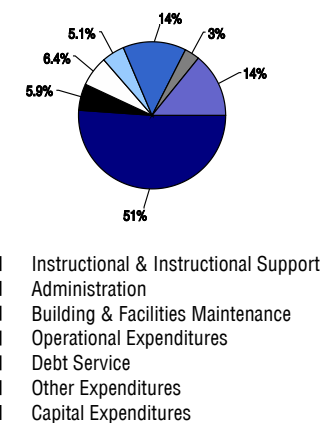
District Source of Funds 2007



District Use of Funds 2007

Instructional & Instructional Support	\$480,277,698
Administration	55,768,256
Building & Facilities Maintenance	60,396,294
Operational Expenditures	48,003,486
Debt Service	129,658,039
Other Expenditures	31,926,406
Total District Operating Expenditures	\$806,030,179
Capital Expenditures	133,627,394
Total District Use of Funds	\$939,657,573

District Use of Funds 2007



District Debt and Capital Construction & Equipment

Total Outstanding Bonded Debt	\$693,618,979
Average Annual Percentage Interest Rate on Debt	4.67%
Amount Raised from Most Recent Bond	\$323,800,000
Amount Spent on New Buildings During Last 2 Years	\$181,180,849

Accreditation

Accreditation is Colorado's primary accountability system, incorporating achievement levels, academic growth, achievement gaps, post-secondary readiness, improvement planning, and compliance. The state accredits districts and districts accredit individual schools.

District Accreditation Status for the 2007-2008 school year:

Voter Approved Funding Changes

Your community did /did not hold an election in November 2006

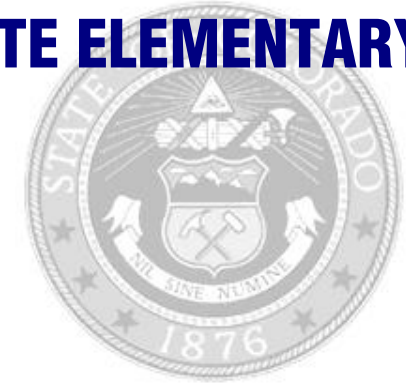
The following items have been approved by voters:

TABOR Override

Bond

Mill Levy Increase

WESTGATE ELEMENTARY SCHOOL



JEFFERSON COUNTY R-1

<http://jeffco.k12.co.us/>

School Accountability Report 2007-2008 School Year

School Performance Summary

Overall Academic Performance on State Assessments **Average**

Academic Growth of Students **High**

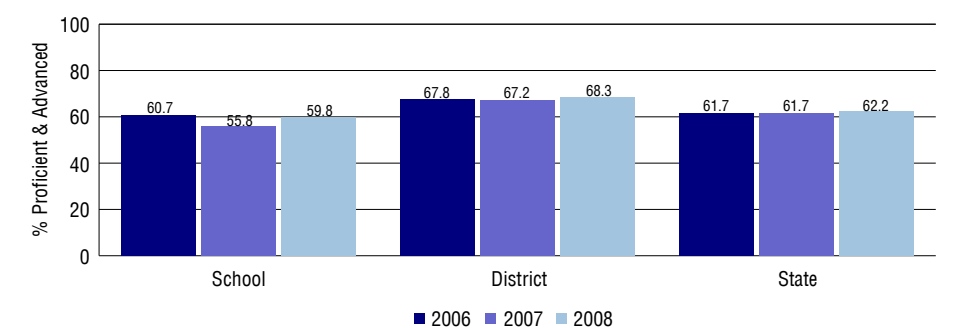
Overall Academic Performance on State Assessments

Each school in the State received a rating of "Excellent", "High", "Average", "Low", or "Unsatisfactory" for student academic performance based on 2007-2008 CSAP and COACT results. The rating is calculated using weighted percentages of each CSAP proficiency level for all content area and grade results for the school, as well as average COACT Reading, Writing, and Math Grade 11 results.

Academic Growth of Students

Each school in the State received a rating of "Low", "Typical", or "High" for student academic growth based on CSAP results. The calculation method is new for 2007-2008. The rating is calculated using student percentile scores matched over two years. More information about the Overall Academic Performance rating and Academic Growth of Students calculations can be found here: http://www.cde.state.co.us/cdeassess/SAR_Info.html.

Percent Proficient and Advanced for Elementary Grades for All Content Areas



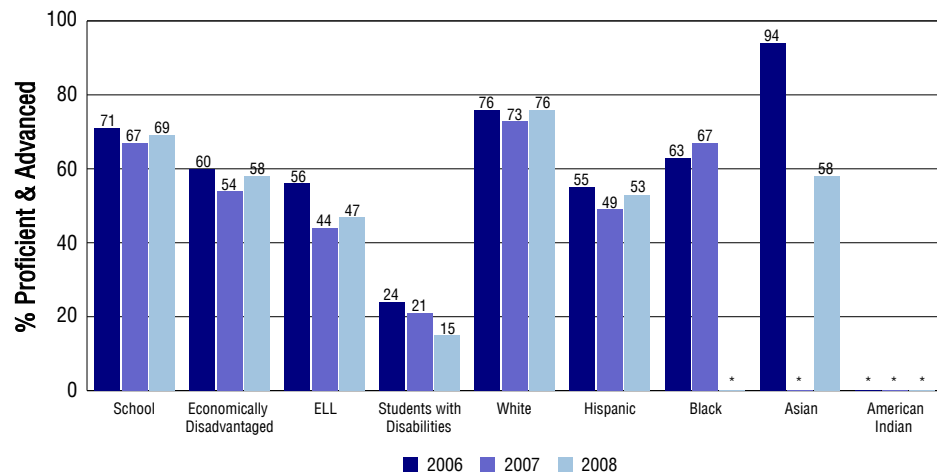
Student Test Scores Used For Calculating Overall Academic Performance

90.0%	Test Scores Counted
3.6%	Test Scores not used due to Language
6.4%	Test Scores not used due to New Student

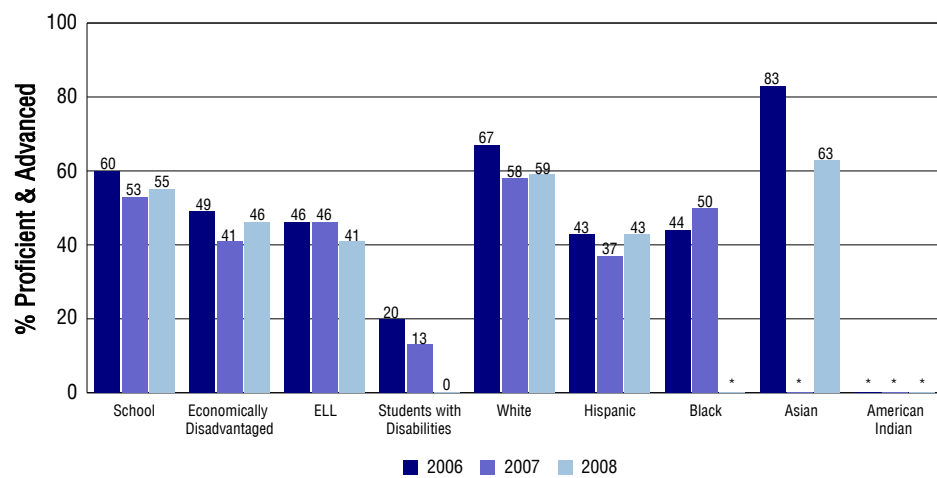
STUDENT PERFORMANCE

These graphs show the percent Proficient and Advanced trends over the past three years for Reading, Writing, and Math. Results are presented for the entire school for all reported grades as well as for different subgroups. Note: * indicates any group with less than 16 student results to be reported.

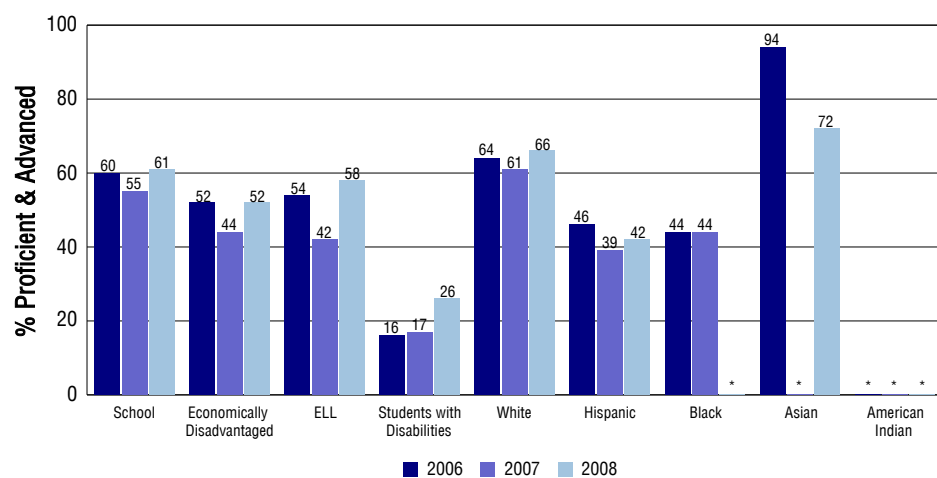
Reading



Writing



Math



SCHOOL INFORMATION

School Pride (as submitted by your district)

- Westgate has a very diverse population of students. Sixteen different languages are spoken as primary other than English.
- Westgate is a PBS school. We focus on Positive Behavior Supports in having students be "Respectful, Responsible, and Safe".
- Westgate has a large attendance area. Our school community is very unique; made up of many different cultural, ethnic, and socioeconomic mixes.
- For more information, visit: <http://www.jeffcopublicschools.org/schools/profiles/elementary/westgate.html>

School Goals (as submitted by your district)

Westgate's primary focus is to have no students score unsatisfactory on the CSAP. We understand the impact for the school and the students who score below the acceptable standard. We actively work with the RtI model of intervention to help all students succeed, regardless of need. Our primary focus is in writing. We are working school-wide to provide a consistent and comprehensive writing process that emphasizes the strategies found in guided writing. We work to have students writing across content areas. Westgate uses Open Court Reading in K - 2 to help our students develop a strong sense of phonics and phonemic awareness.

No Child Left Behind - Adequate Yearly Progress

Did your school make AYP in reading? Yes Math? Yes
 How many targets does your school have? 26 Met? 26

Based on this school's academic performance, your child may be eligible for one or more of the following; ask your school if your child qualifies for:

Extra academic instruction either before or after-school, or in the summer
 Mentoring

For additional information regarding Adequate Yearly Progress please visit <http://www.cde.state.co.us/FedPrograms/ayp/index.asp>

How Westgate Elementary School Compares To Elementary Schools Within A 75-Mile Radius

School	Program Type	Academic Performance	Academic Growth
Green Gables Elementary School		High	Typical
Bear Creek K-8 School		High	Typical
Kendrick Lakes Elementary School		High	Typical
Traylor Elementary School(1)		Average	Typical
Patterson Elementary School		Average	High
Lasley Elementary School		Average	Typical
Belmar Elementary School		Average	Typical
Denison Montessori School(1)		Average	Typical
Sabin Elementary School(1)		Low	Low
Doull Elementary School(1)		Low	Typical

1 Located in Denver County 1 School District.

ABOUT OUR STAFF

School Employment

Each year, your district reports to the Colorado Department of Education on the number of adults who work in your school, as well as the type of work they do. Last year, your school employed:

	Your School		District	
	Full Time	Part Time	Full Time	Part Time
Teachers	31	3	4639	387
Paraprofessionals	4	13	1223	1211
Administrators	1	0	420	17
Other Professionals	1	3	709	93
School Support	2	1	1902	668
School Counselors	0	0	139	4
School Librarians	1	0	126	22
Total Staff	60		11454	

Students per Teacher Ratio

	Student Enrollment	Students per Teacher
Grade 1	88	17.2
Grade 2	80	15.7
Grade 3	96	15.7
Grade 4	89	17.2
Grade 5	80	19.1
Grade 6	76	18.1

Professional Experience of Teachers

	Your School	District
Average years of teaching experience	6	9
Percent of teachers teaching in the subject in which they received their degree	N/A	N/A
Number of teachers with Masters or Doctoral degrees	17	2928
Teachers with 3 years or more of teaching experience	23	3843
Teachers with less than 3 years of teaching experience	11	1183
Number of professional development days	7	8

Salaries

	Your School	District	State
Average Teacher Salary	\$45,123	\$52,512	\$47,494
Average Administrator Salary	\$101,172	\$85,523	\$80,444

Principal: Robert Linton

Number of years as Principal at this school: 20

Number of years as Principal at any school: 20