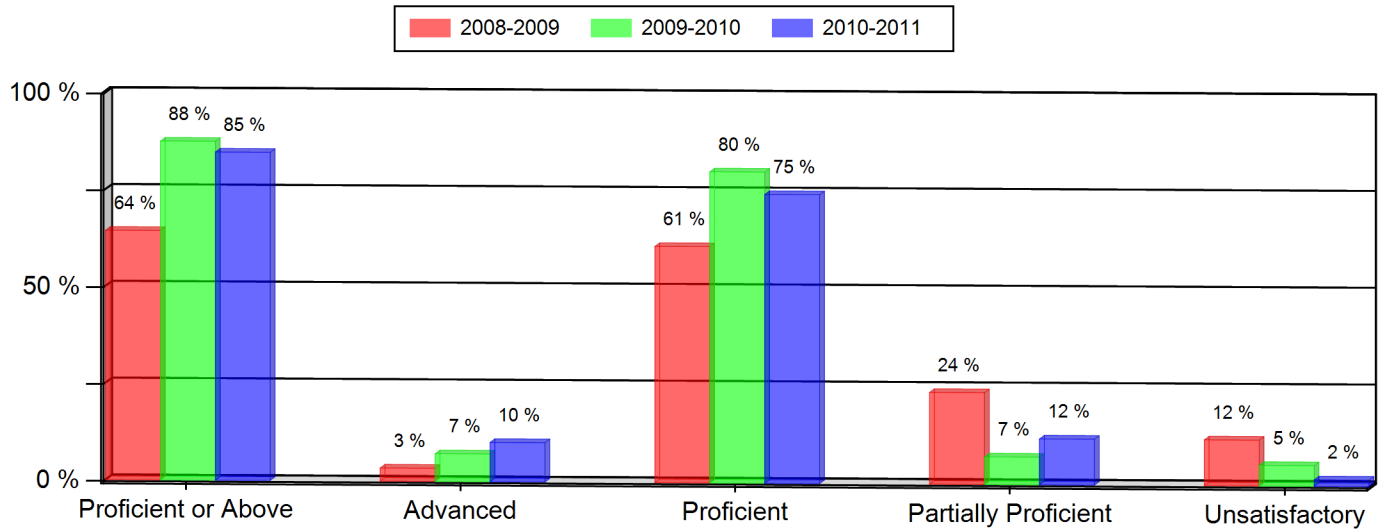


Excel Academy Elementary
Colorado Student Assessment Program (CSAP)
2010-2011

READING (All Students)

Grade 3 --- All Students	2008-2009		2009-2010		2010-2011	
	Num.	Per.	Num.	Per.	Num.	Per.
Proficient or Above	38	64 %	49	88 % *	50	85 %
Advanced	2	3 %	4	7 %	6	10 %
Proficient	36	61 %	45	80 %	44	75 %
Partially Proficient	14	24 %	4	7 %	7	12 %
Unsatisfactory	7	12 %	3	5 %	1	2 %
Not Tested	0	0 %	0	0 %	1	2 %
Number of Students	59		56		59	



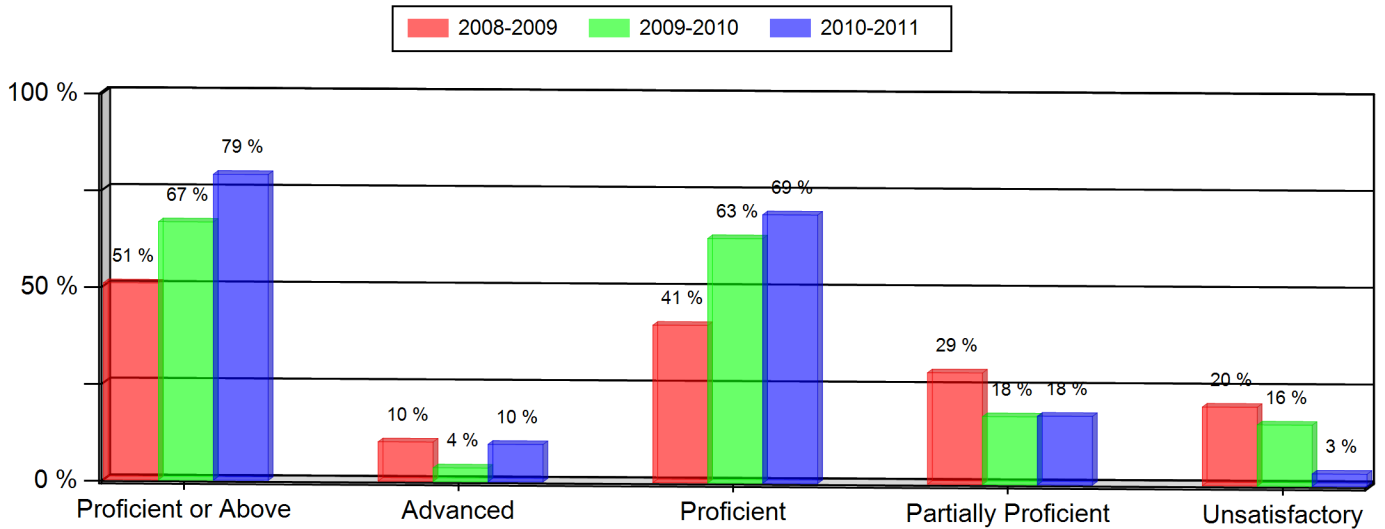
Notes:

- * Indicates statistically significant change from previous year.
- ** Data not presented as fewer than 16 students are represented.
- Grades 5, 8, and 10 CSAP Science scores can only be displayed beginning with the 2007-08 school year, due to revised Science standards and CSAP scale scores in 2008.
- Federal changes to the 2010-11 collection of student race and ethnicity definitions may impact the trending of race and ethnicity data on this report between the school years 2009-10 and 2010-11.

Excel Academy Elementary
Colorado Student Assessment Program (CSAP)
2010-2011

READING (All Students)

Grade 4 --- All Students	2008-2009		2009-2010		2010-2011	
	Num.	Per.	Num.	Per.	Num.	Per.
Proficient or Above	30	51 % *	38	67 % *	49	79 %
Advanced	6	10 %	2	4 %	6	10 %
Proficient	24	41 %	36	63 %	43	69 %
Partially Proficient	17	29 %	10	18 %	11	18 %
Unsatisfactory	12	20 %	9	16 %	2	3 %
Not Tested	0	0 %	0	0 %	0	0 %
Number of Students	59		57		62	



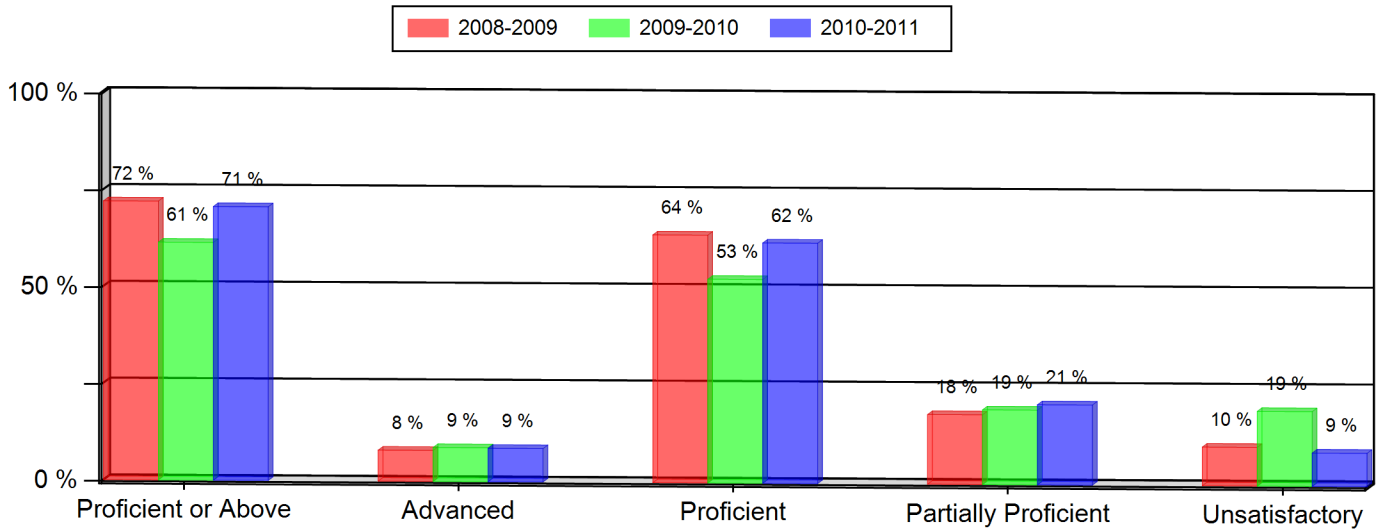
Notes:

- * Indicates statistically significant change from previous year.
- ** Data not presented as fewer than 16 students are represented.
- Grades 5, 8, and 10 CSAP Science scores can only be displayed beginning with the 2007-08 school year, due to revised Science standards and CSAP scale scores in 2008.
- Federal changes to the 2010-11 collection of student race and ethnicity definitions may impact the trending of race and ethnicity data on this report between the school years 2009-10 and 2010-11.

Excel Academy Elementary
Colorado Student Assessment Program (CSAP)
2010-2011

READING (All Students)

Grade 5 --- All Students	2008-2009		2009-2010		2010-2011	
	Num.	Per.	Num.	Per.	Num.	Per.
Proficient or Above	36	72 %	35	61 %	41	71 %
Advanced	4	8 %	5	9 %	5	9 %
Proficient	32	64 %	30	53 %	36	62 %
Partially Proficient	9	18 %	11	19 %	12	21 %
Unsatisfactory	5	10 %	11	19 %	5	9 %
Not Tested	0	0 %	0	0 %	0	0 %
Number of Students	50		57		58	



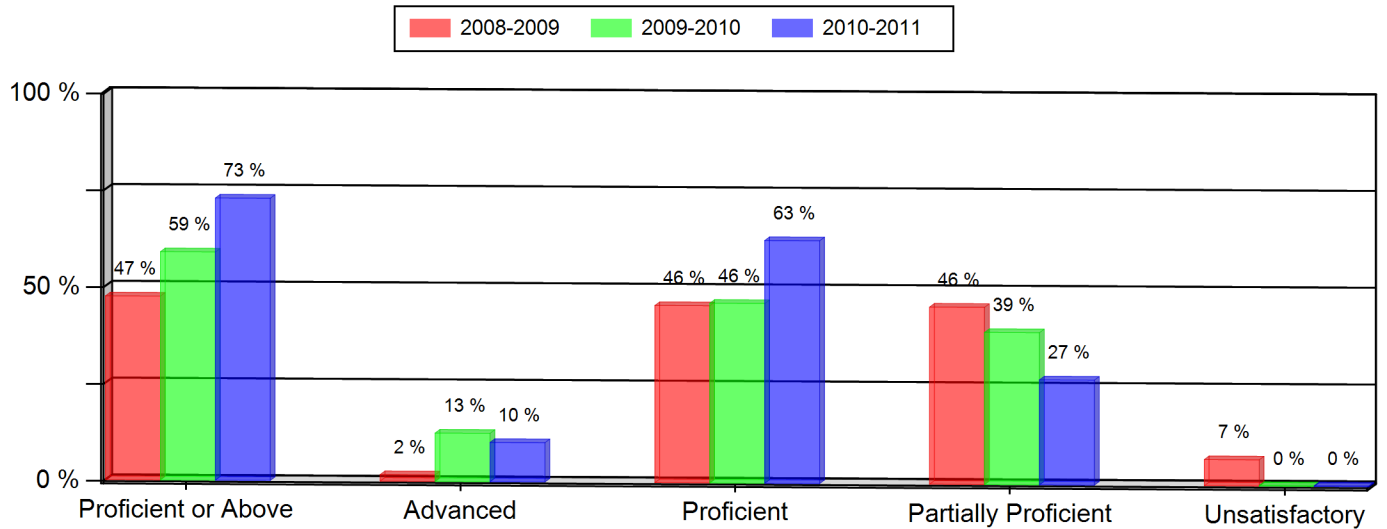
Notes:

- * Indicates statistically significant change from previous year.
- ** Data not presented as fewer than 16 students are represented.
- Grades 5, 8, and 10 CSAP Science scores can only be displayed beginning with the 2007-08 school year, due to revised Science standards and CSAP scale scores in 2008.
- Federal changes to the 2010-11 collection of student race and ethnicity definitions may impact the trending of race and ethnicity data on this report between the school years 2009-10 and 2010-11.

Excel Academy Elementary
Colorado Student Assessment Program (CSAP)
2010-2011

WRITING (All Students)

Grade 3 --- All Students	2008-2009		2009-2010		2010-2011	
	Num.	Per.	Num.	Per.	Num.	Per.
Proficient or Above	28	47 %	33	59 %	43	73 %
Advanced	1	2 %	7	13 %	6	10 %
Proficient	27	46 %	26	46 %	37	63 %
Partially Proficient	27	46 %	22	39 %	16	27 %
Unsatisfactory	4	7 %	0	0 %	0	0 %
Not Tested	0	0 %	1	2 %	0	0 %
Number of Students	59		56		59	



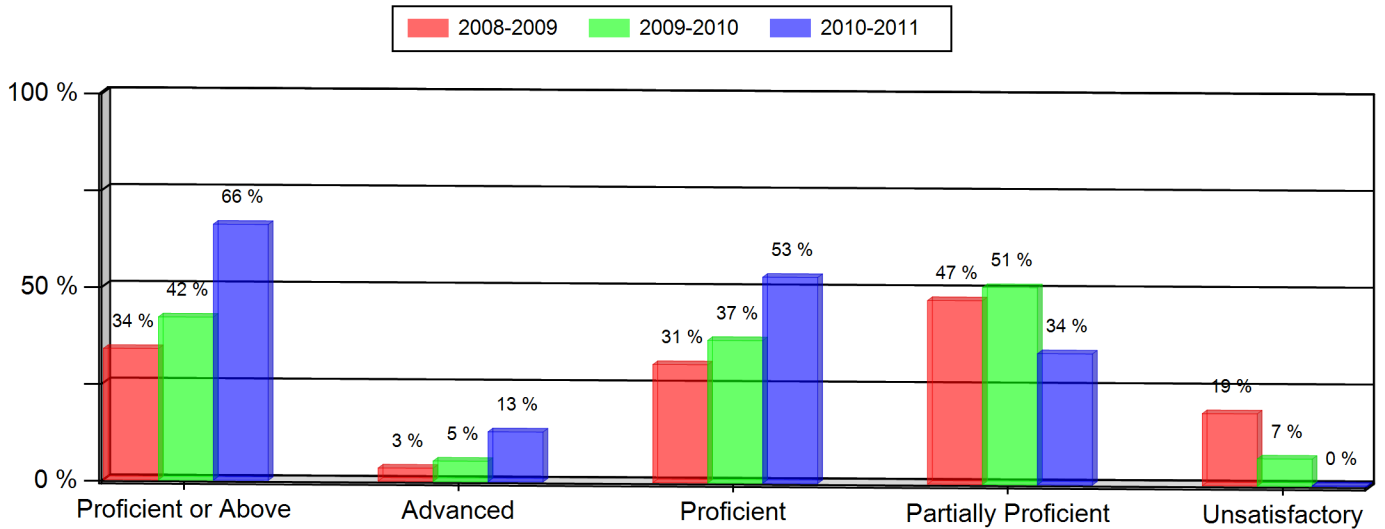
Notes:

- * Indicates statistically significant change from previous year.
- ** Data not presented as fewer than 16 students are represented.
- Grades 5, 8, and 10 CSAP Science scores can only be displayed beginning with the 2007-08 school year, due to revised Science standards and CSAP scale scores in 2008.
- Federal changes to the 2010-11 collection of student race and ethnicity definitions may impact the trending of race and ethnicity data on this report between the school years 2009-10 and 2010-11.

Excel Academy Elementary
Colorado Student Assessment Program (CSAP)
2010-2011

WRITING (All Students)

Grade 4 --- All Students	2008-2009		2009-2010		2010-2011	
	Num.	Per.	Num.	Per.	Num.	Per.
Proficient or Above	20	34 % *	24	42 %	41	66 % *
Advanced	2	3 %	3	5 %	8	13 %
Proficient	18	31 %	21	37 %	33	53 %
Partially Proficient	28	47 %	29	51 %	21	34 %
Unsatisfactory	11	19 %	4	7 %	0	0 %
Not Tested	0	0 %	0	0 %	0	0 %
Number of Students	59		57		62	



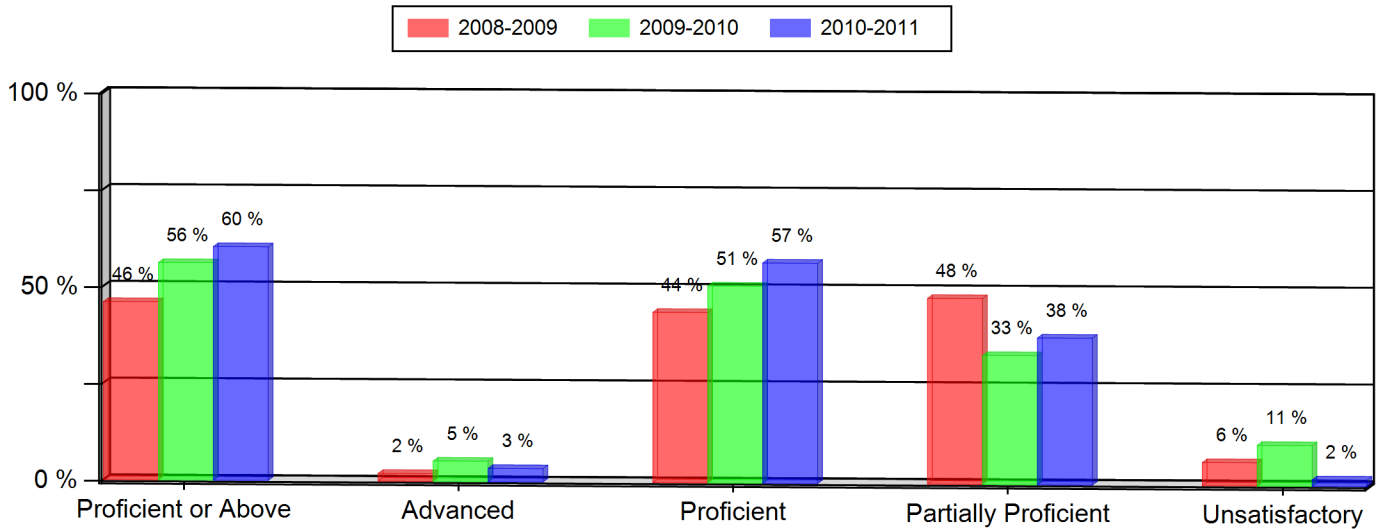
Notes:

- * Indicates statistically significant change from previous year.
- ** Data not presented as fewer than 16 students are represented.
- Grades 5, 8, and 10 CSAP Science scores can only be displayed beginning with the 2007-08 school year, due to revised Science standards and CSAP scale scores in 2008.
- Federal changes to the 2010-11 collection of student race and ethnicity definitions may impact the trending of race and ethnicity data on this report between the school years 2009-10 and 2010-11.

Excel Academy Elementary
Colorado Student Assessment Program (CSAP)
2010-2011

WRITING (All Students)

Grade 5 --- All Students	2008-2009		2009-2010		2010-2011	
	Num.	Per.	Num.	Per.	Num.	Per.
Proficient or Above	23	46 %	32	56 %	35	60 %
Advanced	1	2 %	3	5 %	2	3 %
Proficient	22	44 %	29	51 %	33	57 %
Partially Proficient	24	48 %	19	33 %	22	38 %
Unsatisfactory	3	6 %	6	11 %	1	2 %
Not Tested	0	0 %	0	0 %	0	0 %
Number of Students	50		57		58	



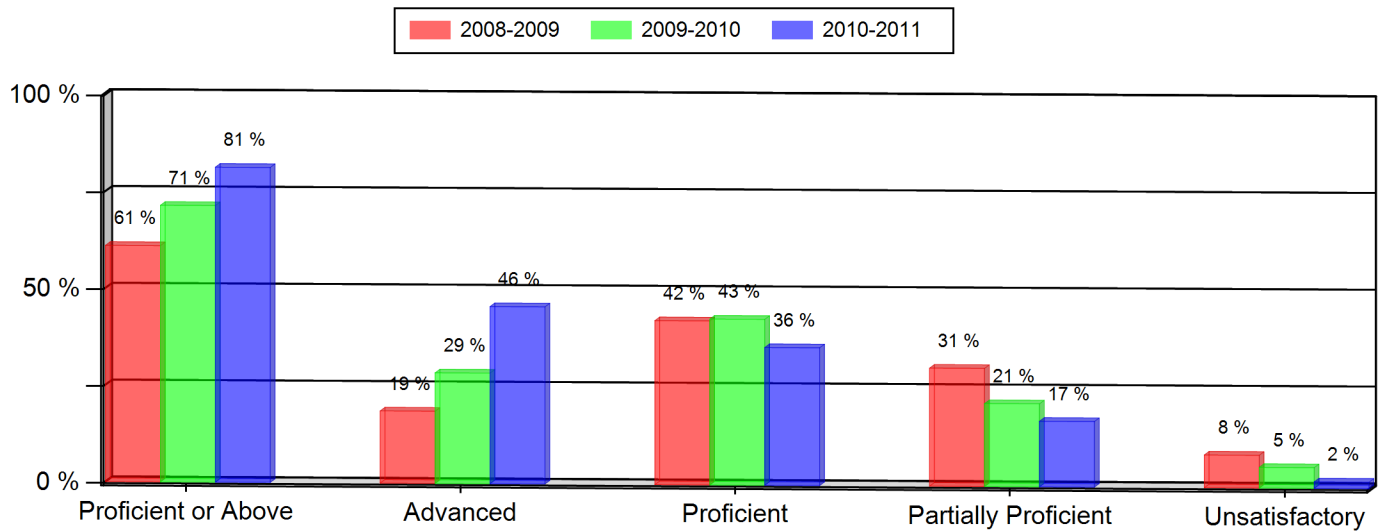
Notes:

- * Indicates statistically significant change from previous year.
- ** Data not presented as fewer than 16 students are represented.
- Grades 5, 8, and 10 CSAP Science scores can only be displayed beginning with the 2007-08 school year, due to revised Science standards and CSAP scale scores in 2008.
- Federal changes to the 2010-11 collection of student race and ethnicity definitions may impact the trending of race and ethnicity data on this report between the school years 2009-10 and 2010-11.

Excel Academy Elementary
Colorado Student Assessment Program (CSAP)
2010-2011

MATH (All Students)

Grade 3 --- All Students	2008-2009		2009-2010		2010-2011	
	Num.	Per.	Num.	Per.	Num.	Per.
Proficient or Above	36	61 %	40	71 %	48	81 %
Advanced	11	19 %	16	29 %	27	46 %
Proficient	25	42 %	24	43 %	21	36 %
Partially Proficient	18	31 %	12	21 %	10	17 %
Unsatisfactory	5	8 %	3	5 %	1	2 %
Not Tested	0	0 %	1	2 %	0	0 %
Number of Students	59		56		59	



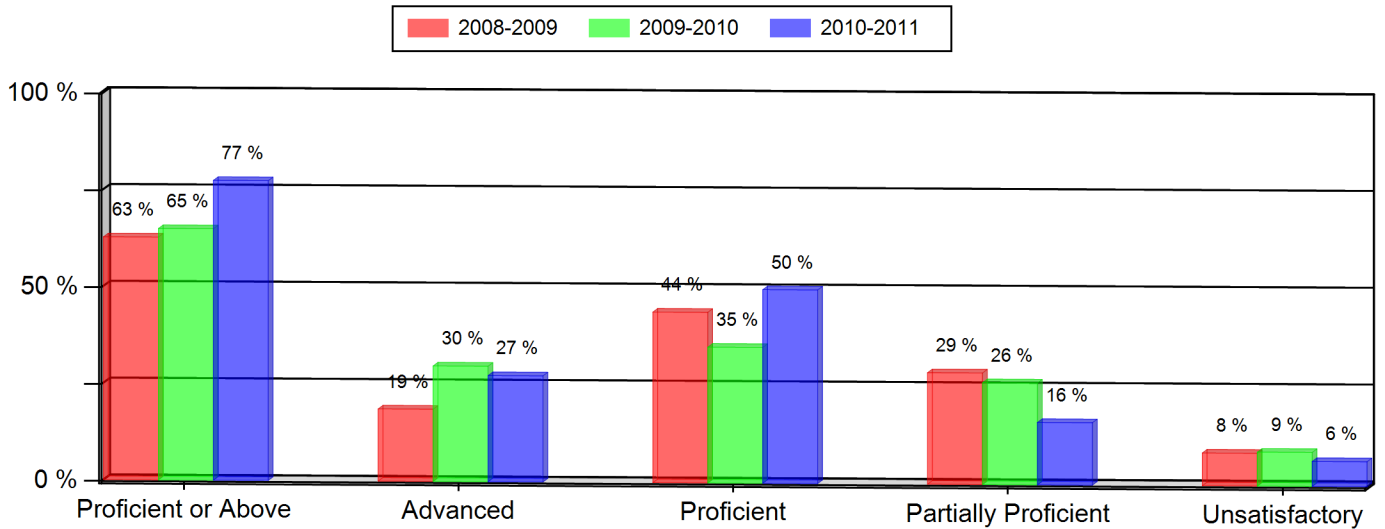
Notes:

- * Indicates statistically significant change from previous year.
- ** Data not presented as fewer than 16 students are represented.
- Grades 5, 8, and 10 CSAP Science scores can only be displayed beginning with the 2007-08 school year, due to revised Science standards and CSAP scale scores in 2008.
- Federal changes to the 2010-11 collection of student race and ethnicity definitions may impact the trending of race and ethnicity data on this report between the school years 2009-10 and 2010-11.

Excel Academy Elementary
Colorado Student Assessment Program (CSAP)
2010-2011

MATH (All Students)

Grade 4 --- All Students	2008-2009		2009-2010		2010-2011	
	Num.	Per.	Num.	Per.	Num.	Per.
Proficient or Above	37	63 % *	37	65 %	48	77 %
Advanced	11	19 %	17	30 %	17	27 %
Proficient	26	44 %	20	35 %	31	50 %
Partially Proficient	17	29 %	15	26 %	10	16 %
Unsatisfactory	5	8 %	5	9 %	4	6 %
Not Tested	0	0 %	0	0 %	0	0 %
Number of Students	59		57		62	



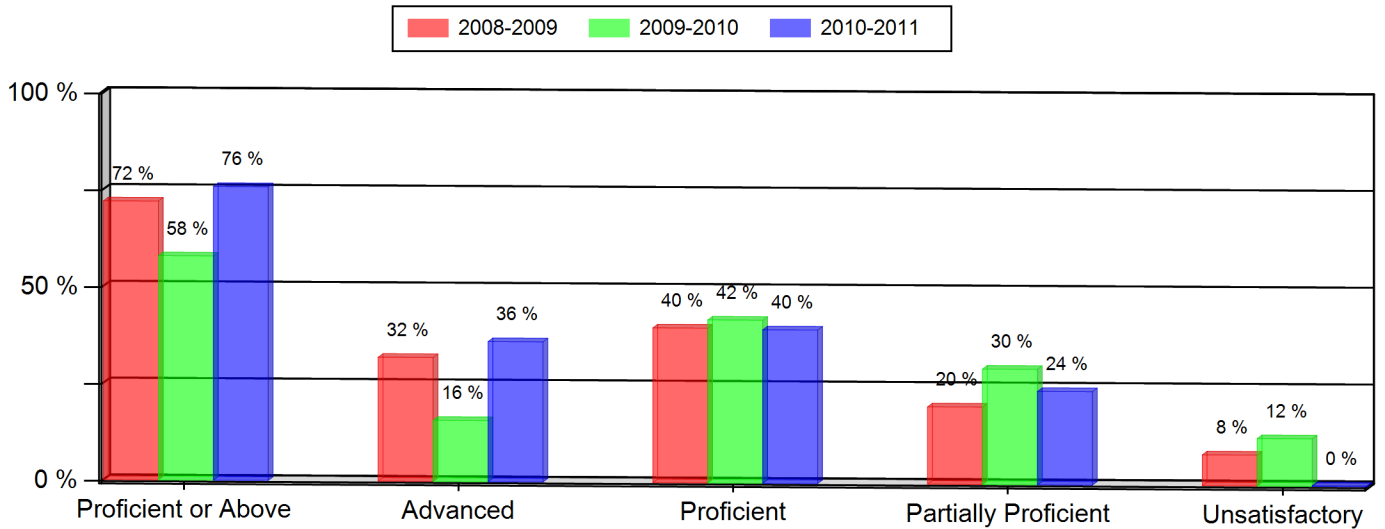
Notes:

- * Indicates statistically significant change from previous year.
- ** Data not presented as fewer than 16 students are represented.
- Grades 5, 8, and 10 CSAP Science scores can only be displayed beginning with the 2007-08 school year, due to revised Science standards and CSAP scale scores in 2008.
- Federal changes to the 2010-11 collection of student race and ethnicity definitions may impact the trending of race and ethnicity data on this report between the school years 2009-10 and 2010-11.

Excel Academy Elementary
Colorado Student Assessment Program (CSAP)
2010-2011

MATH (All Students)

Grade 5 --- All Students	2008-2009		2009-2010		2010-2011	
	Num.	Per.	Num.	Per.	Num.	Per.
Proficient or Above	36	72 %	33	58 %	44	76 % *
Advanced	16	32 %	9	16 %	21	36 %
Proficient	20	40 %	24	42 %	23	40 %
Partially Proficient	10	20 %	17	30 %	14	24 %
Unsatisfactory	4	8 %	7	12 %	0	0 %
Not Tested	0	0 %	0	0 %	0	0 %
Number of Students	50		57		58	



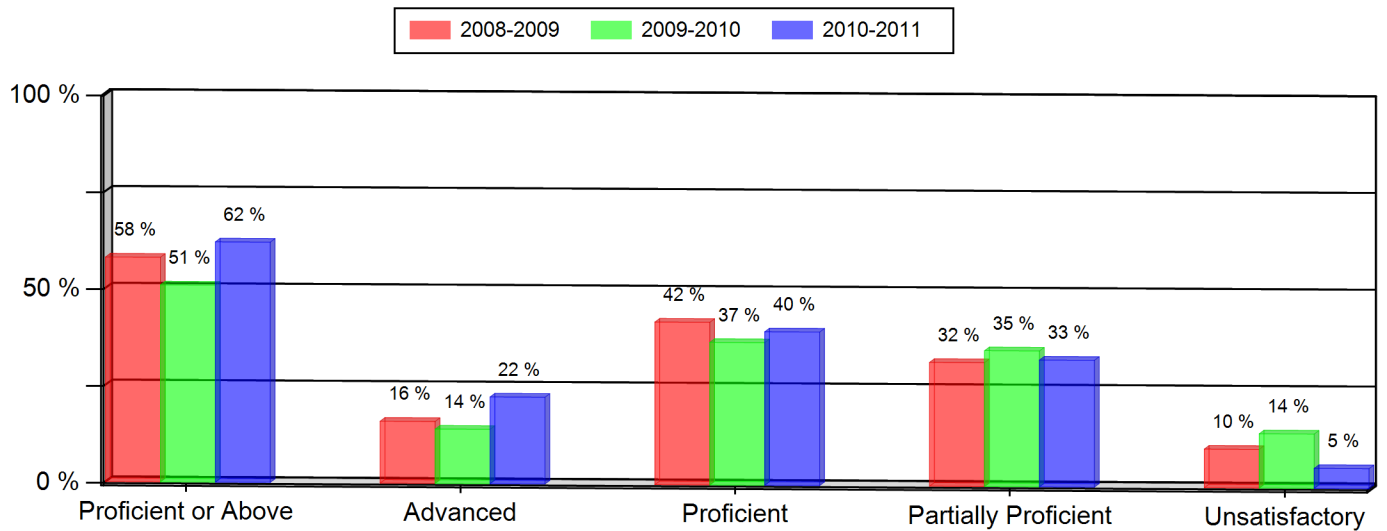
Notes:

- * Indicates statistically significant change from previous year.
- ** Data not presented as fewer than 16 students are represented.
- Grades 5, 8, and 10 CSAP Science scores can only be displayed beginning with the 2007-08 school year, due to revised Science standards and CSAP scale scores in 2008.
- Federal changes to the 2010-11 collection of student race and ethnicity definitions may impact the trending of race and ethnicity data on this report between the school years 2009-10 and 2010-11.

Excel Academy Elementary
Colorado Student Assessment Program (CSAP)
2010-2011

SCIENCE (All Students)

Grade 5 --- All Students	2008-2009		2009-2010		2010-2011	
	Num.	Per.	Num.	Per.	Num.	Per.
Proficient or Above	29	58 %	29	51 %	36	62 %
Advanced	8	16 %	8	14 %	13	22 %
Proficient	21	42 %	21	37 %	23	40 %
Partially Proficient	16	32 %	20	35 %	19	33 %
Unsatisfactory	5	10 %	8	14 %	3	5 %
Not Tested	0	0 %	0	0 %	0	0 %
Number of Students	50		57		58	



Notes:

- * Indicates statistically significant change from previous year.
- ** Data not presented as fewer than 16 students are represented.
- Grades 5, 8, and 10 CSAP Science scores can only be displayed beginning with the 2007-08 school year, due to revised Science standards and CSAP scale scores in 2008.
- Federal changes to the 2010-11 collection of student race and ethnicity definitions may impact the trending of race and ethnicity data on this report between the school years 2009-10 and 2010-11.