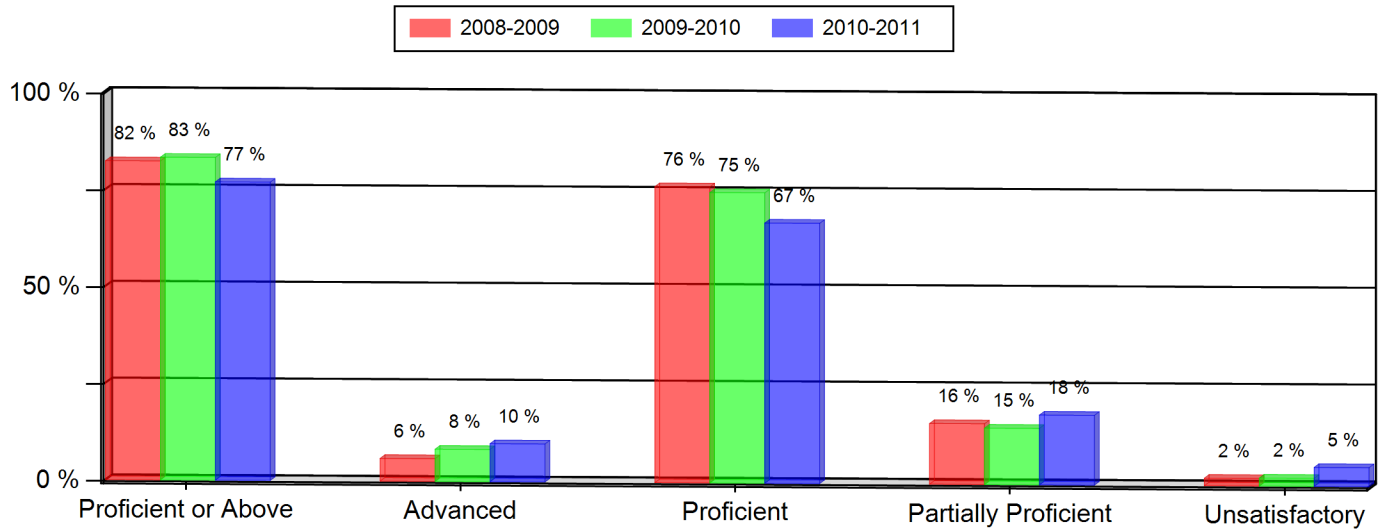


Excel Academy Middle
Colorado Student Assessment Program (CSAP)
2010-2011

READING (All Students)

Grade 6 --- All Students	2008-2009		2009-2010		2010-2011	
	Num.	Per.	Num.	Per.	Num.	Per.
Proficient or Above	42	82 %	40	83 %	47	77 %
Advanced	3	6 %	4	8 %	6	10 %
Proficient	39	76 %	36	75 %	41	67 %
Partially Proficient	8	16 %	7	15 %	11	18 %
Unsatisfactory	1	2 %	1	2 %	3	5 %
Not Tested	0	0 %	0	0 %	0	0 %
Number of Students	51		48		61	



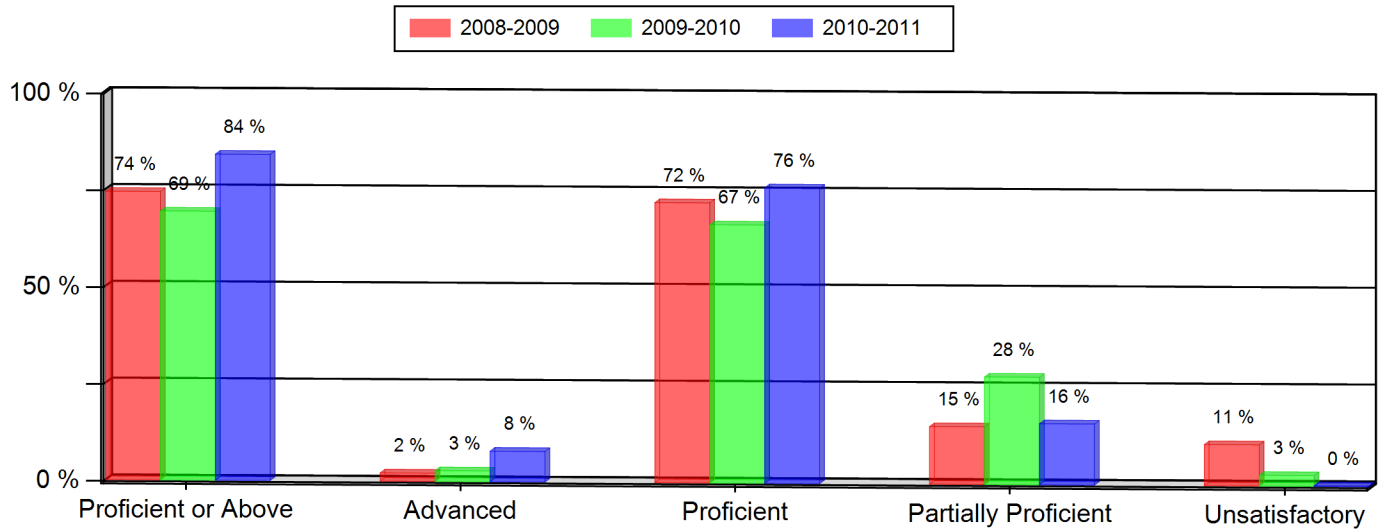
Notes:

- * Indicates statistically significant change from previous year.
- ** Data not presented as fewer than 16 students are represented.
- Grades 5, 8, and 10 CSAP Science scores can only be displayed beginning with the 2007-08 school year, due to revised Science standards and CSAP scale scores in 2008.
- Federal changes to the 2010-11 collection of student race and ethnicity definitions may impact the trending of race and ethnicity data on this report between the school years 2009-10 and 2010-11.

Excel Academy Middle
Colorado Student Assessment Program (CSAP)
2010-2011

READING (All Students)

Grade 7 --- All Students	2008-2009		2009-2010		2010-2011	
	Num.	Per.	Num.	Per.	Num.	Per.
Proficient or Above	35	74 %	25	69 %	32	84 %
Advanced	1	2 %	1	3 %	3	8 %
Proficient	34	72 %	24	67 %	29	76 %
Partially Proficient	7	15 %	10	28 %	6	16 %
Unsatisfactory	5	11 %	1	3 %	0	0 %
Not Tested	0	0 %	0	0 %	0	0 %
Number of Students	47		36		38	



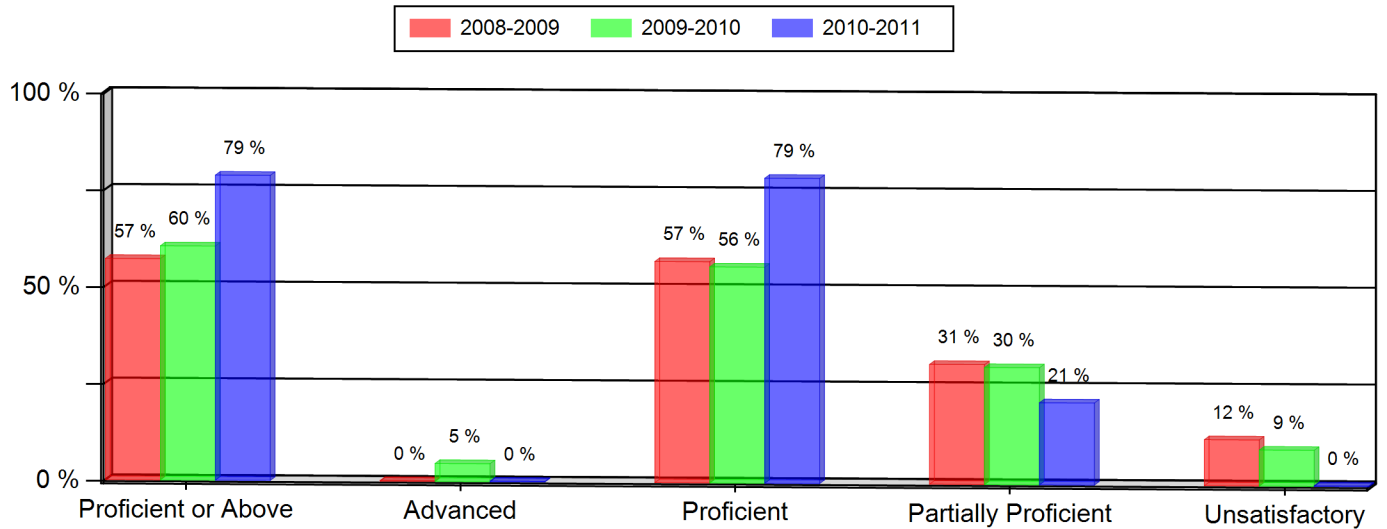
Notes:

- * Indicates statistically significant change from previous year.
- ** Data not presented as fewer than 16 students are represented.
- Grades 5, 8, and 10 CSAP Science scores can only be displayed beginning with the 2007-08 school year, due to revised Science standards and CSAP scale scores in 2008.
- Federal changes to the 2010-11 collection of student race and ethnicity definitions may impact the trending of race and ethnicity data on this report between the school years 2009-10 and 2010-11.

Excel Academy Middle
Colorado Student Assessment Program (CSAP)
2010-2011

READING (All Students)

Grade 8 --- All Students	2008-2009		2009-2010		2010-2011	
	Num.	Per.	Num.	Per.	Num.	Per.
Proficient or Above	24	57 %	26	60 %	26	79 % *
Advanced	0	0 %	2	5 %	0	0 %
Proficient	24	57 %	24	56 %	26	79 %
Partially Proficient	13	31 %	13	30 %	7	21 %
Unsatisfactory	5	12 %	4	9 %	0	0 %
Not Tested	0	0 %	0	0 %	0	0 %
Number of Students	42		43		33	



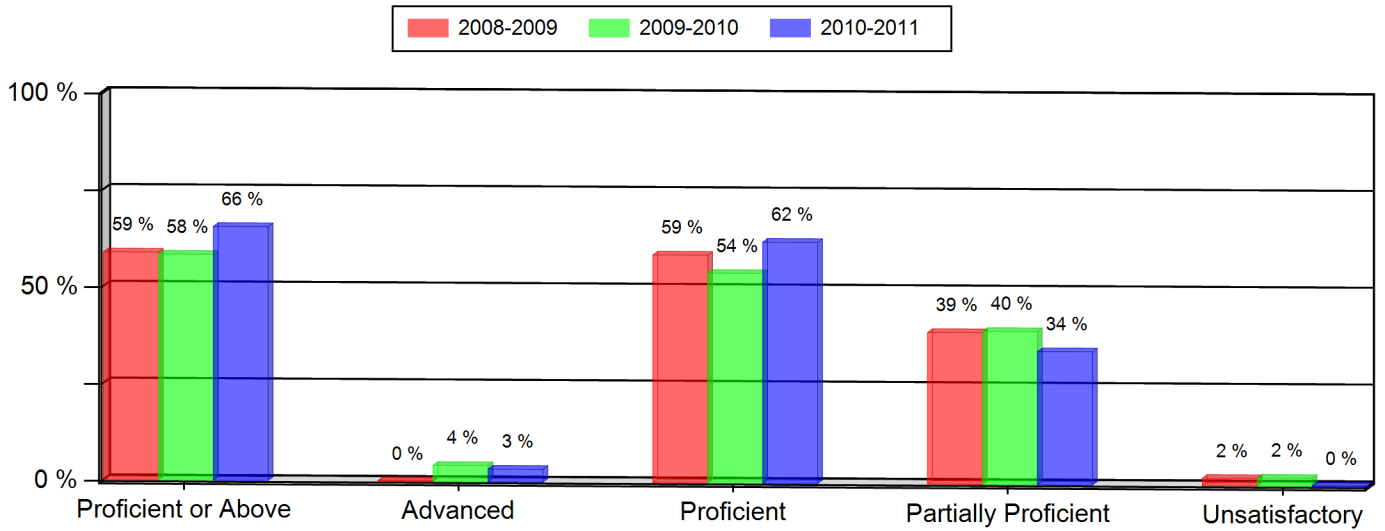
Notes:

- * Indicates statistically significant change from previous year.
- ** Data not presented as fewer than 16 students are represented.
- Grades 5, 8, and 10 CSAP Science scores can only be displayed beginning with the 2007-08 school year, due to revised Science standards and CSAP scale scores in 2008.
- Federal changes to the 2010-11 collection of student race and ethnicity definitions may impact the trending of race and ethnicity data on this report between the school years 2009-10 and 2010-11.

Excel Academy Middle
Colorado Student Assessment Program (CSAP)
2010-2011

WRITING (All Students)

Grade 6 --- All Students	2008-2009		2009-2010		2010-2011	
	Num.	Per.	Num.	Per.	Num.	Per.
Proficient or Above	30	59 %	28	58 %	40	66 %
Advanced	0	0 %	2	4 %	2	3 %
Proficient	30	59 %	26	54 %	38	62 %
Partially Proficient	20	39 %	19	40 %	21	34 %
Unsatisfactory	1	2 %	1	2 %	0	0 %
Not Tested	0	0 %	0	0 %	0	0 %
Number of Students	51		48		61	



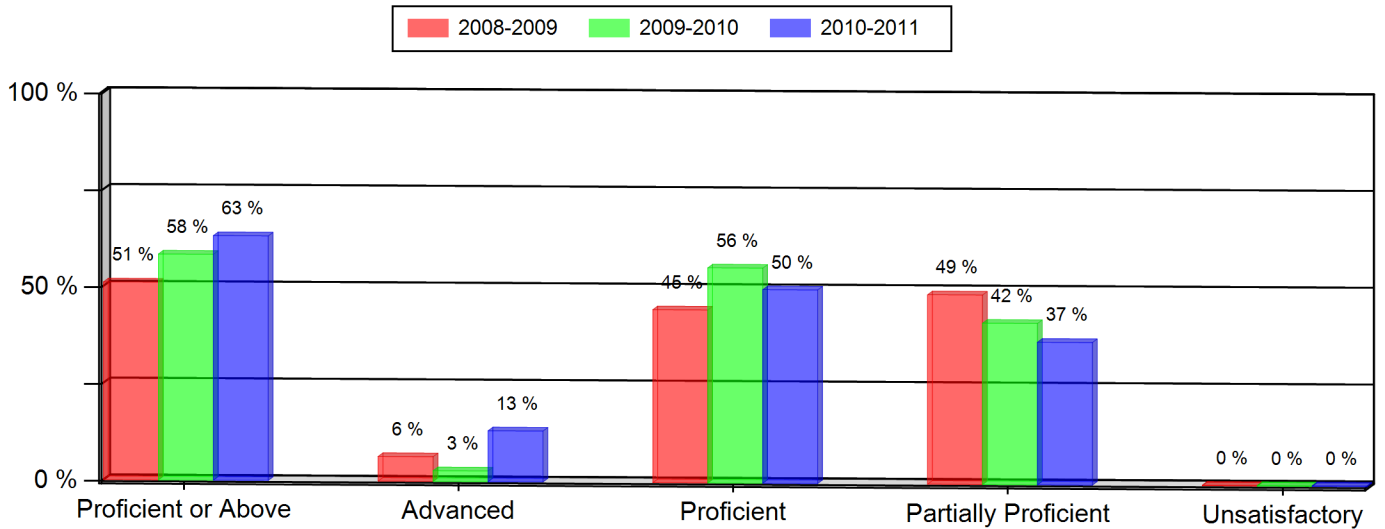
Notes:

- * Indicates statistically significant change from previous year.
- ** Data not presented as fewer than 16 students are represented.
- Grades 5, 8, and 10 CSAP Science scores can only be displayed beginning with the 2007-08 school year, due to revised Science standards and CSAP scale scores in 2008.
- Federal changes to the 2010-11 collection of student race and ethnicity definitions may impact the trending of race and ethnicity data on this report between the school years 2009-10 and 2010-11.

Excel Academy Middle
Colorado Student Assessment Program (CSAP)
2010-2011

WRITING (All Students)

Grade 7 --- All Students	2008-2009		2009-2010		2010-2011	
	Num.	Per.	Num.	Per.	Num.	Per.
Proficient or Above	24	51 %	21	58 %	24	63 %
Advanced	3	6 %	1	3 %	5	13 %
Proficient	21	45 %	20	56 %	19	50 %
Partially Proficient	23	49 %	15	42 %	14	37 %
Unsatisfactory	0	0 %	0	0 %	0	0 %
Not Tested	0	0 %	0	0 %	0	0 %
Number of Students	47		36		38	



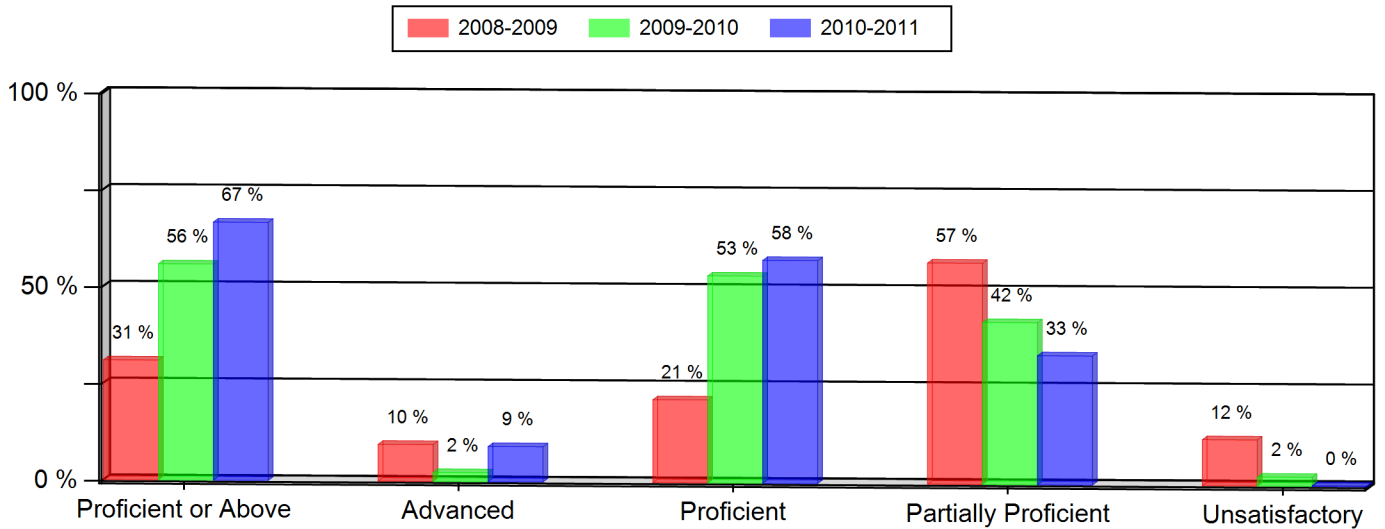
Notes:

- * Indicates statistically significant change from previous year.
- ** Data not presented as fewer than 16 students are represented.
- Grades 5, 8, and 10 CSAP Science scores can only be displayed beginning with the 2007-08 school year, due to revised Science standards and CSAP scale scores in 2008.
- Federal changes to the 2010-11 collection of student race and ethnicity definitions may impact the trending of race and ethnicity data on this report between the school years 2009-10 and 2010-11.

Excel Academy Middle
Colorado Student Assessment Program (CSAP)
2010-2011

WRITING (All Students)

Grade 8 --- All Students	2008-2009		2009-2010		2010-2011	
	Num.	Per.	Num.	Per.	Num.	Per.
Proficient or Above	13	31 % *	24	56 % *	22	67 %
Advanced	4	10 %	1	2 %	3	9 %
Proficient	9	21 %	23	53 %	19	58 %
Partially Proficient	24	57 %	18	42 %	11	33 %
Unsatisfactory	5	12 %	1	2 %	0	0 %
Not Tested	0	0 %	0	0 %	0	0 %
Number of Students	42		43		33	



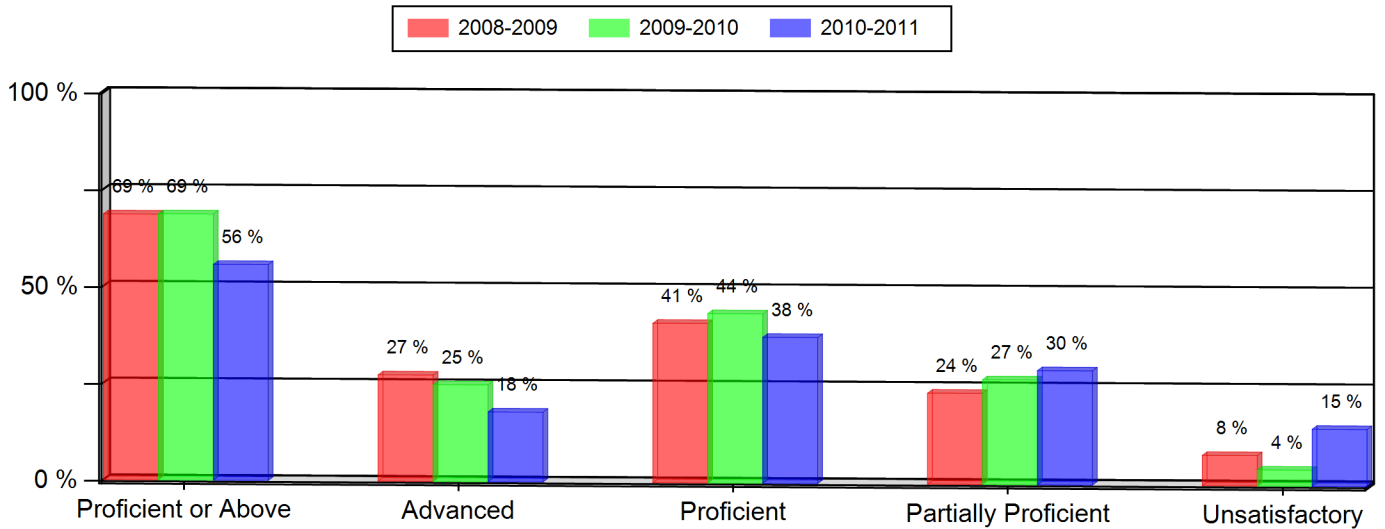
Notes:

- * Indicates statistically significant change from previous year.
- ** Data not presented as fewer than 16 students are represented.
- Grades 5, 8, and 10 CSAP Science scores can only be displayed beginning with the 2007-08 school year, due to revised Science standards and CSAP scale scores in 2008.
- Federal changes to the 2010-11 collection of student race and ethnicity definitions may impact the trending of race and ethnicity data on this report between the school years 2009-10 and 2010-11.

Excel Academy Middle
Colorado Student Assessment Program (CSAP)
2010-2011

MATH (All Students)

Grade 6 --- All Students	2008-2009		2009-2010		2010-2011	
	Num.	Per.	Num.	Per.	Num.	Per.
Proficient or Above	35	69 %	33	69 %	34	56 %
Advanced	14	27 %	12	25 %	11	18 %
Proficient	21	41 %	21	44 %	23	38 %
Partially Proficient	12	24 %	13	27 %	18	30 %
Unsatisfactory	4	8 %	2	4 %	9	15 %
Not Tested	0	0 %	0	0 %	0	0 %
Number of Students	51		48		61	



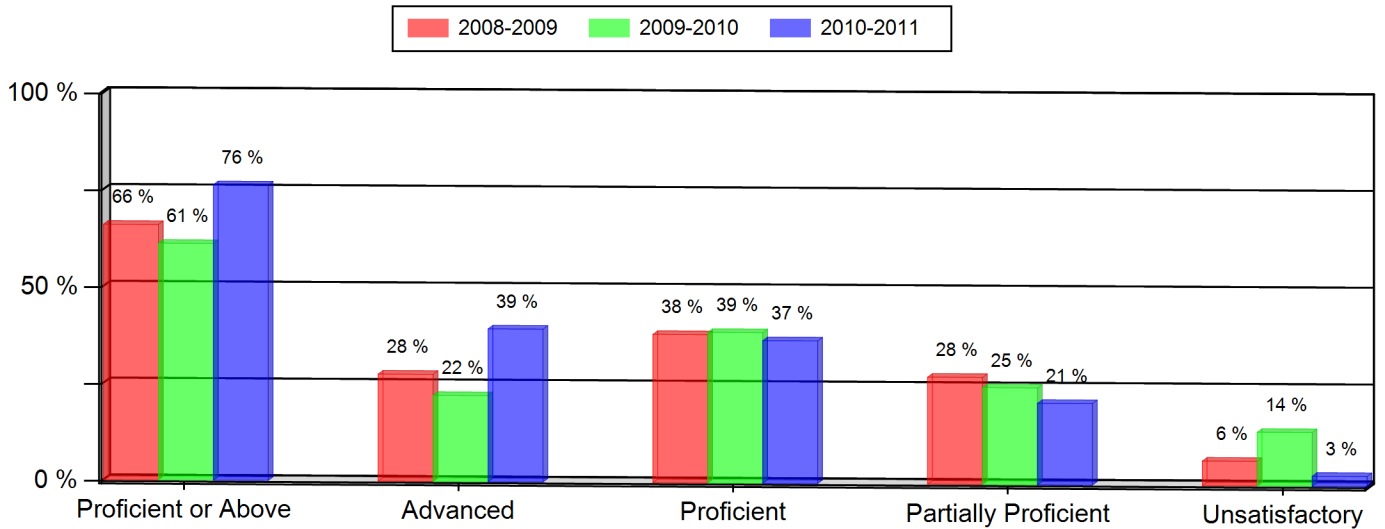
Notes:

- * Indicates statistically significant change from previous year.
- ** Data not presented as fewer than 16 students are represented.
- Grades 5, 8, and 10 CSAP Science scores can only be displayed beginning with the 2007-08 school year, due to revised Science standards and CSAP scale scores in 2008.
- Federal changes to the 2010-11 collection of student race and ethnicity definitions may impact the trending of race and ethnicity data on this report between the school years 2009-10 and 2010-11.

Excel Academy Middle
Colorado Student Assessment Program (CSAP)
2010-2011

MATH (All Students)

Grade 7 --- All Students	2008-2009		2009-2010		2010-2011	
	Num.	Per.	Num.	Per.	Num.	Per.
Proficient or Above	31	66 % *	22	61 %	29	76 %
Advanced	13	28 %	8	22 %	15	39 %
Proficient	18	38 %	14	39 %	14	37 %
Partially Proficient	13	28 %	9	25 %	8	21 %
Unsatisfactory	3	6 %	5	14 %	1	3 %
Not Tested	0	0 %	0	0 %	0	0 %
Number of Students	47		36		38	



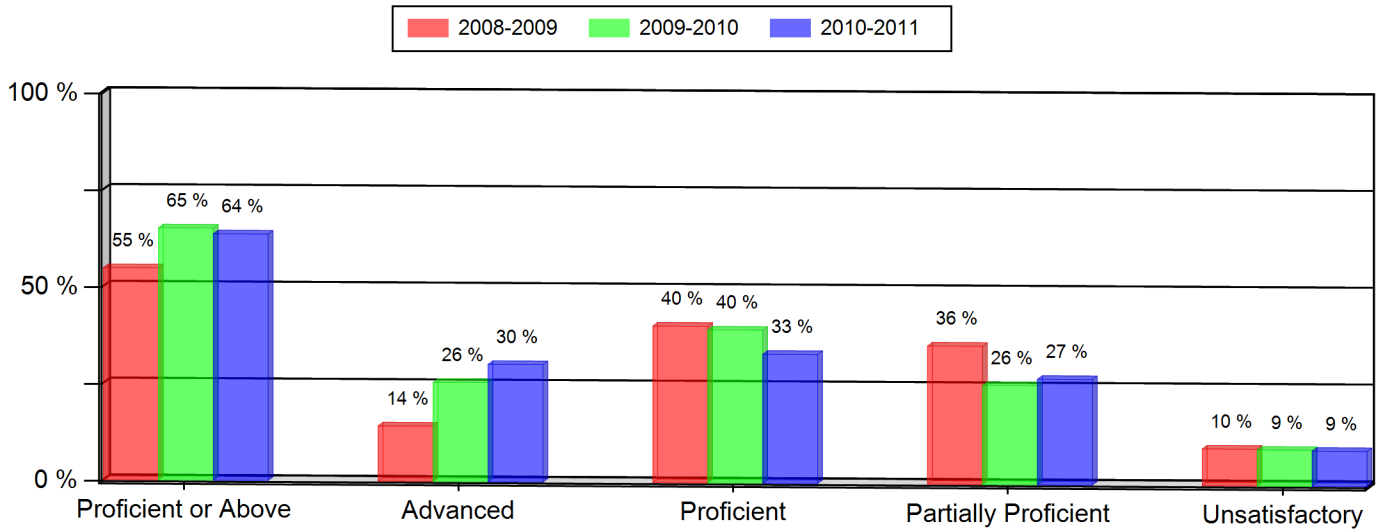
Notes:

- * Indicates statistically significant change from previous year.
- ** Data not presented as fewer than 16 students are represented.
- Grades 5, 8, and 10 CSAP Science scores can only be displayed beginning with the 2007-08 school year, due to revised Science standards and CSAP scale scores in 2008.
- Federal changes to the 2010-11 collection of student race and ethnicity definitions may impact the trending of race and ethnicity data on this report between the school years 2009-10 and 2010-11.

Excel Academy Middle
Colorado Student Assessment Program (CSAP)
2010-2011

MATH (All Students)

Grade 8 --- All Students	2008-2009		2009-2010		2010-2011	
	Num.	Per.	Num.	Per.	Num.	Per.
Proficient or Above	23	55 %	28	65 %	21	64 %
Advanced	6	14 %	11	26 %	10	30 %
Proficient	17	40 %	17	40 %	11	33 %
Partially Proficient	15	36 %	11	26 %	9	27 %
Unsatisfactory	4	10 %	4	9 %	3	9 %
Not Tested	0	0 %	0	0 %	0	0 %
Number of Students	42		43		33	



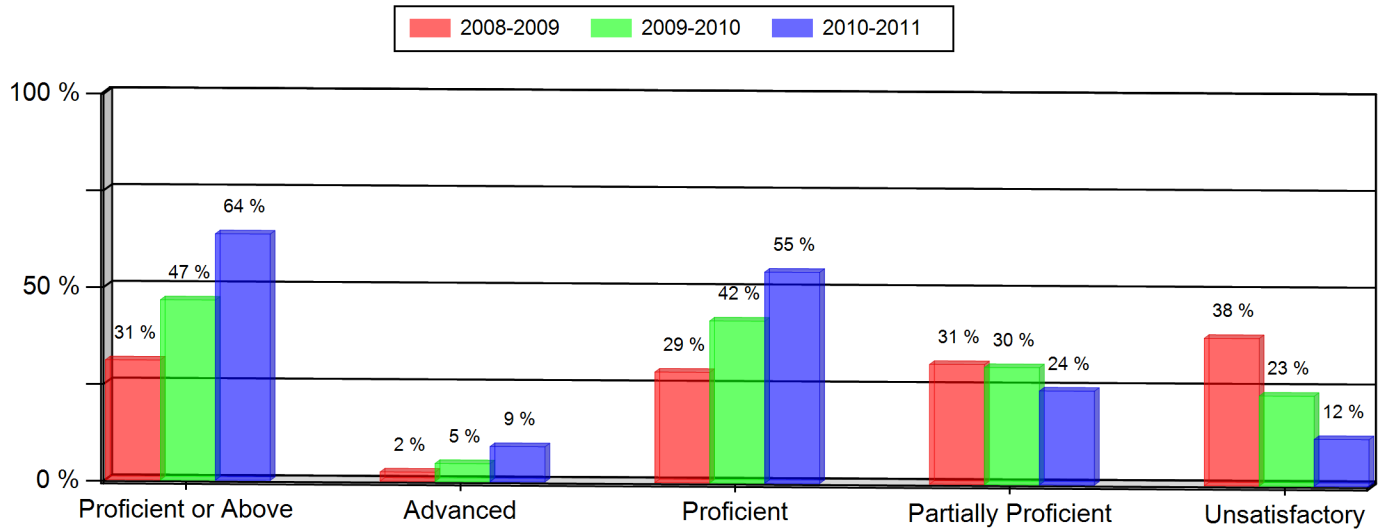
Notes:

- * Indicates statistically significant change from previous year.
- ** Data not presented as fewer than 16 students are represented.
- Grades 5, 8, and 10 CSAP Science scores can only be displayed beginning with the 2007-08 school year, due to revised Science standards and CSAP scale scores in 2008.
- Federal changes to the 2010-11 collection of student race and ethnicity definitions may impact the trending of race and ethnicity data on this report between the school years 2009-10 and 2010-11.

Excel Academy Middle
Colorado Student Assessment Program (CSAP)
2010-2011

SCIENCE (All Students)

Grade 8 --- All Students	2008-2009		2009-2010		2010-2011	
	Num.	Per.	Num.	Per.	Num.	Per.
Proficient or Above	13	31 %	20	47 %	21	64 %
Advanced	1	2 %	2	5 %	3	9 %
Proficient	12	29 %	18	42 %	18	55 %
Partially Proficient	13	31 %	13	30 %	8	24 %
Unsatisfactory	16	38 %	10	23 %	4	12 %
Not Tested	0	0 %	0	0 %	0	0 %
Number of Students	42		43		33	



Notes:

- * Indicates statistically significant change from previous year.
- ** Data not presented as fewer than 16 students are represented.
- Grades 5, 8, and 10 CSAP Science scores can only be displayed beginning with the 2007-08 school year, due to revised Science standards and CSAP scale scores in 2008.
- Federal changes to the 2010-11 collection of student race and ethnicity definitions may impact the trending of race and ethnicity data on this report between the school years 2009-10 and 2010-11.