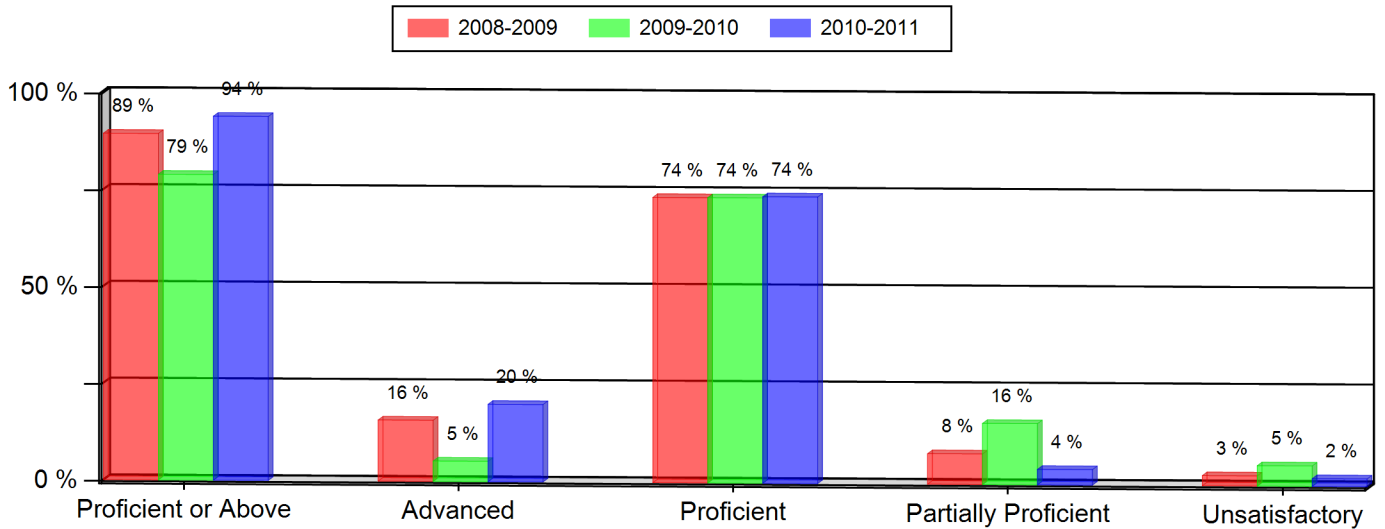


**Parmalee Elementary**  
Colorado Student Assessment Program (CSAP)  
2010-2011

**READING (All Students)**

Grade 3 --- All Students	2008-2009		2009-2010		2010-2011	
	Num.	Per.	Num.	Per.	Num.	Per.
Proficient or Above	34	89 %	30	79 %	47	94 % *
Advanced	6	16 %	2	5 %	10	20 %
Proficient	28	74 %	28	74 %	37	74 %
Partially Proficient	3	8 %	6	16 %	2	4 %
Unsatisfactory	1	3 %	2	5 %	1	2 %
Not Tested	0	0 %	0	0 %	0	0 %
Number of Students	38		38		50	



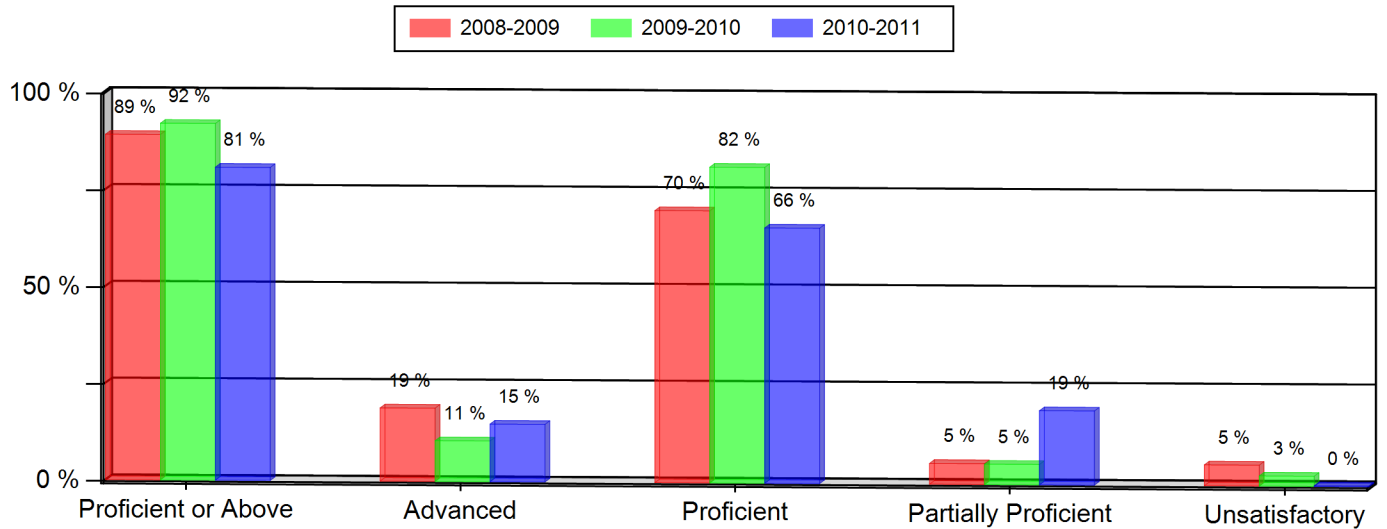
Notes:

- \* Indicates statistically significant change from previous year.
- \*\* Data not presented as fewer than 16 students are represented.
- Grades 5, 8, and 10 CSAP Science scores can only be displayed beginning with the 2007-08 school year, due to revised Science standards and CSAP scale scores in 2008.
- Federal changes to the 2010-11 collection of student race and ethnicity definitions may impact the trending of race and ethnicity data on this report between the school years 2009-10 and 2010-11.

**Parmalee Elementary**  
Colorado Student Assessment Program (CSAP)  
2010-2011

**READING (All Students)**

Grade 4 --- All Students	2008-2009		2009-2010		2010-2011	
	Num.	Per.	Num.	Per.	Num.	Per.
Proficient or Above	33	89 %	35	92 %	38	81 %
Advanced	7	19 %	4	11 %	7	15 %
Proficient	26	70 %	31	82 %	31	66 %
Partially Proficient	2	5 %	2	5 %	9	19 %
Unsatisfactory	2	5 %	1	3 %	0	0 %
Not Tested	0	0 %	0	0 %	0	0 %
Number of Students	37		38		47	



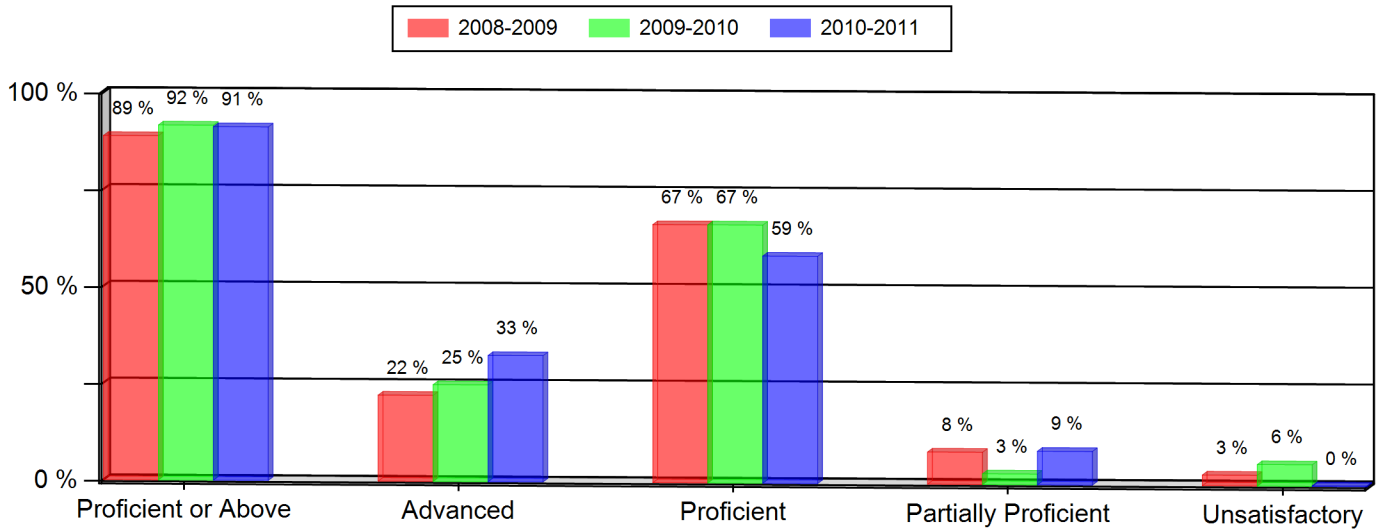
Notes:

- \* Indicates statistically significant change from previous year.
- \*\* Data not presented as fewer than 16 students are represented.
- Grades 5, 8, and 10 CSAP Science scores can only be displayed beginning with the 2007-08 school year, due to revised Science standards and CSAP scale scores in 2008.
- Federal changes to the 2010-11 collection of student race and ethnicity definitions may impact the trending of race and ethnicity data on this report between the school years 2009-10 and 2010-11.

**Parmalee Elementary**  
Colorado Student Assessment Program (CSAP)  
2010-2011

**READING (All Students)**

Grade 5 --- All Students	2008-2009		2009-2010		2010-2011	
	Num.	Per.	Num.	Per.	Num.	Per.
Proficient or Above	32	89 %	33	92 %	42	91 %
Advanced	8	22 %	9	25 %	15	33 %
Proficient	24	67 %	24	67 %	27	59 %
Partially Proficient	3	8 %	1	3 %	4	9 %
Unsatisfactory	1	3 %	2	6 %	0	0 %
Not Tested	0	0 %	0	0 %	0	0 %
Number of Students	36		36		46	



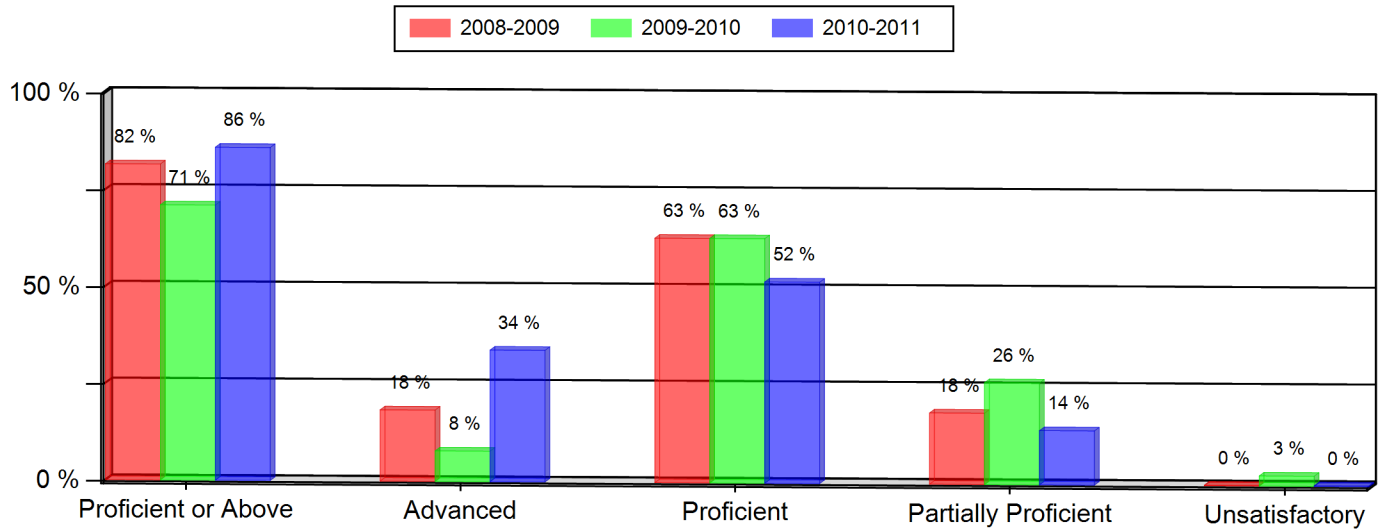
Notes:

- \* Indicates statistically significant change from previous year.
- \*\* Data not presented as fewer than 16 students are represented.
- Grades 5, 8, and 10 CSAP Science scores can only be displayed beginning with the 2007-08 school year, due to revised Science standards and CSAP scale scores in 2008.
- Federal changes to the 2010-11 collection of student race and ethnicity definitions may impact the trending of race and ethnicity data on this report between the school years 2009-10 and 2010-11.

**Parmalee Elementary**  
Colorado Student Assessment Program (CSAP)  
2010-2011

**WRITING (All Students)**

Grade 3 --- All Students	2008-2009		2009-2010		2010-2011	
	Num.	Per.	Num.	Per.	Num.	Per.
Proficient or Above	31	82 %	27	71 %	43	86 % *
Advanced	7	18 %	3	8 %	17	34 %
Proficient	24	63 %	24	63 %	26	52 %
Partially Proficient	7	18 %	10	26 %	7	14 %
Unsatisfactory	0	0 %	1	3 %	0	0 %
Not Tested	0	0 %	0	0 %	0	0 %
Number of Students	38		38		50	



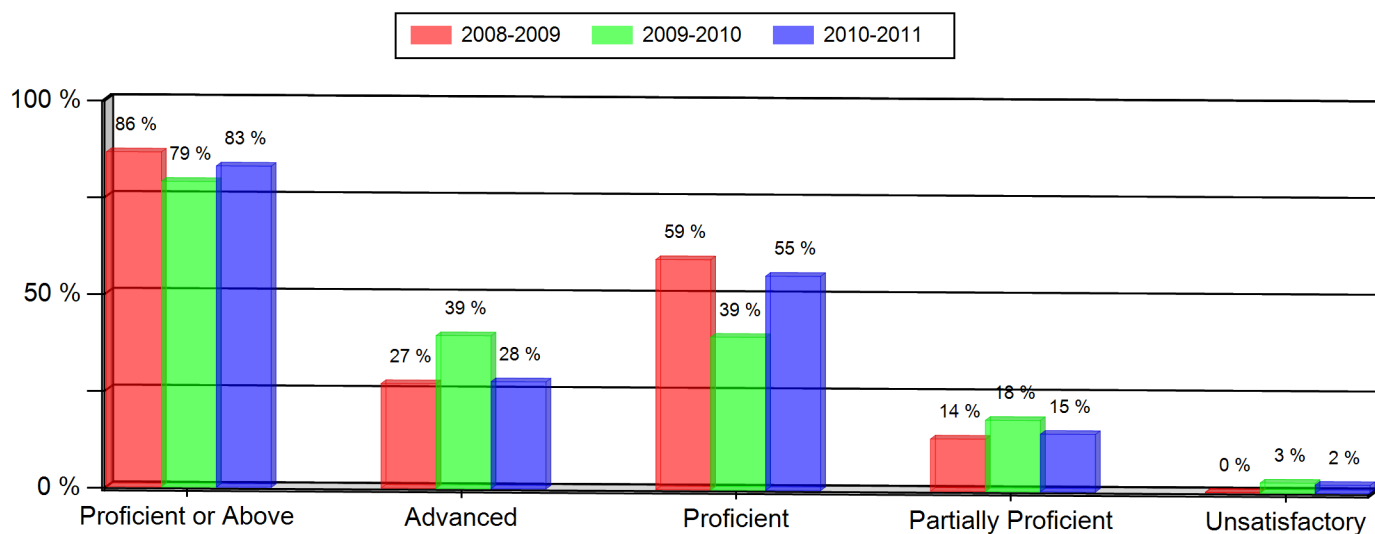
Notes:

- \* Indicates statistically significant change from previous year.
- \*\* Data not presented as fewer than 16 students are represented.
- Grades 5, 8, and 10 CSAP Science scores can only be displayed beginning with the 2007-08 school year, due to revised Science standards and CSAP scale scores in 2008.
- Federal changes to the 2010-11 collection of student race and ethnicity definitions may impact the trending of race and ethnicity data on this report between the school years 2009-10 and 2010-11.

**Parmalee Elementary**  
Colorado Student Assessment Program (CSAP)  
2010-2011

**WRITING (All Students)**

Grade 4 --- All Students	2008-2009		2009-2010		2010-2011	
	Num.	Per.	Num.	Per.	Num.	Per.
Proficient or Above	32	86 %	30	79 %	39	83 %
Advanced	10	27 %	15	39 %	13	28 %
Proficient	22	59 %	15	39 %	26	55 %
Partially Proficient	5	14 %	7	18 %	7	15 %
Unsatisfactory	0	0 %	1	3 %	1	2 %
Not Tested	0	0 %	0	0 %	0	0 %
Number of Students	37		38		47	



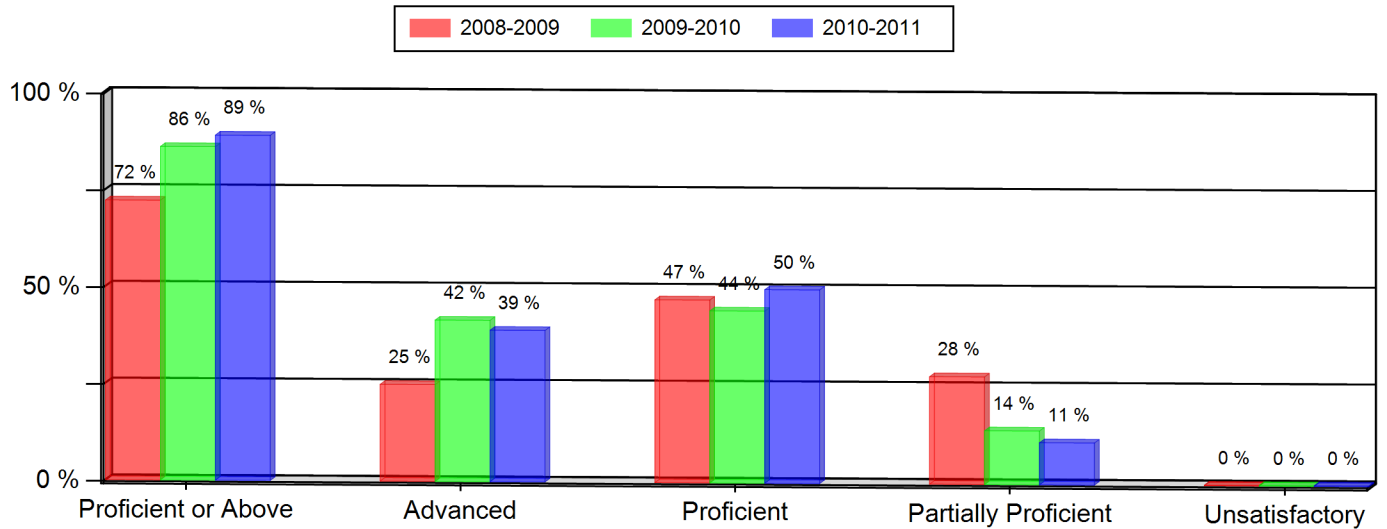
Notes:

- \* Indicates statistically significant change from previous year.
- \*\* Data not presented as fewer than 16 students are represented.
- Grades 5, 8, and 10 CSAP Science scores can only be displayed beginning with the 2007-08 school year, due to revised Science standards and CSAP scale scores in 2008.
- Federal changes to the 2010-11 collection of student race and ethnicity definitions may impact the trending of race and ethnicity data on this report between the school years 2009-10 and 2010-11.

**Parmalee Elementary**  
Colorado Student Assessment Program (CSAP)  
2010-2011

**WRITING (All Students)**

Grade 5 --- All Students	2008-2009		2009-2010		2010-2011	
	Num.	Per.	Num.	Per.	Num.	Per.
Proficient or Above	26	72 %	31	86 %	41	89 %
Advanced	9	25 %	15	42 %	18	39 %
Proficient	17	47 %	16	44 %	23	50 %
Partially Proficient	10	28 %	5	14 %	5	11 %
Unsatisfactory	0	0 %	0	0 %	0	0 %
Not Tested	0	0 %	0	0 %	0	0 %
Number of Students	36		36		46	



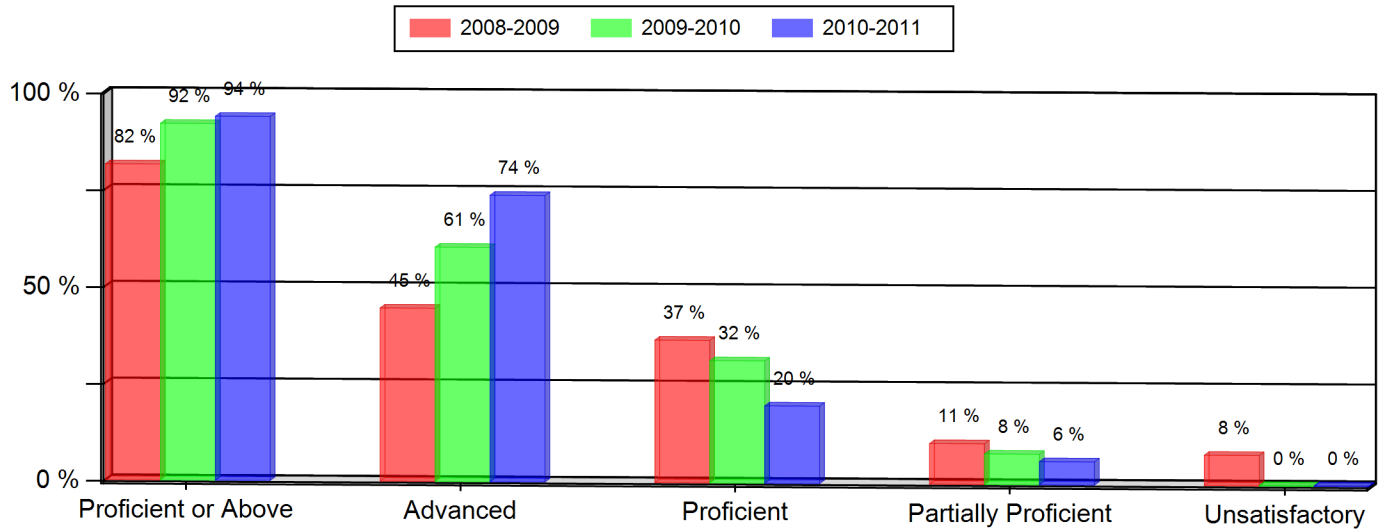
Notes:

- \* Indicates statistically significant change from previous year.
- \*\* Data not presented as fewer than 16 students are represented.
- Grades 5, 8, and 10 CSAP Science scores can only be displayed beginning with the 2007-08 school year, due to revised Science standards and CSAP scale scores in 2008.
- Federal changes to the 2010-11 collection of student race and ethnicity definitions may impact the trending of race and ethnicity data on this report between the school years 2009-10 and 2010-11.

**Parmalee Elementary**  
Colorado Student Assessment Program (CSAP)  
2010-2011

**MATH (All Students)**

Grade 3 --- All Students	2008-2009		2009-2010		2010-2011	
	Num.	Per.	Num.	Per.	Num.	Per.
Proficient or Above	31	82 %	35	92 %	47	94 %
Advanced	17	45 %	23	61 %	37	74 %
Proficient	14	37 %	12	32 %	10	20 %
Partially Proficient	4	11 %	3	8 %	3	6 %
Unsatisfactory	3	8 %	0	0 %	0	0 %
Not Tested	0	0 %	0	0 %	0	0 %
Number of Students	38		38		50	



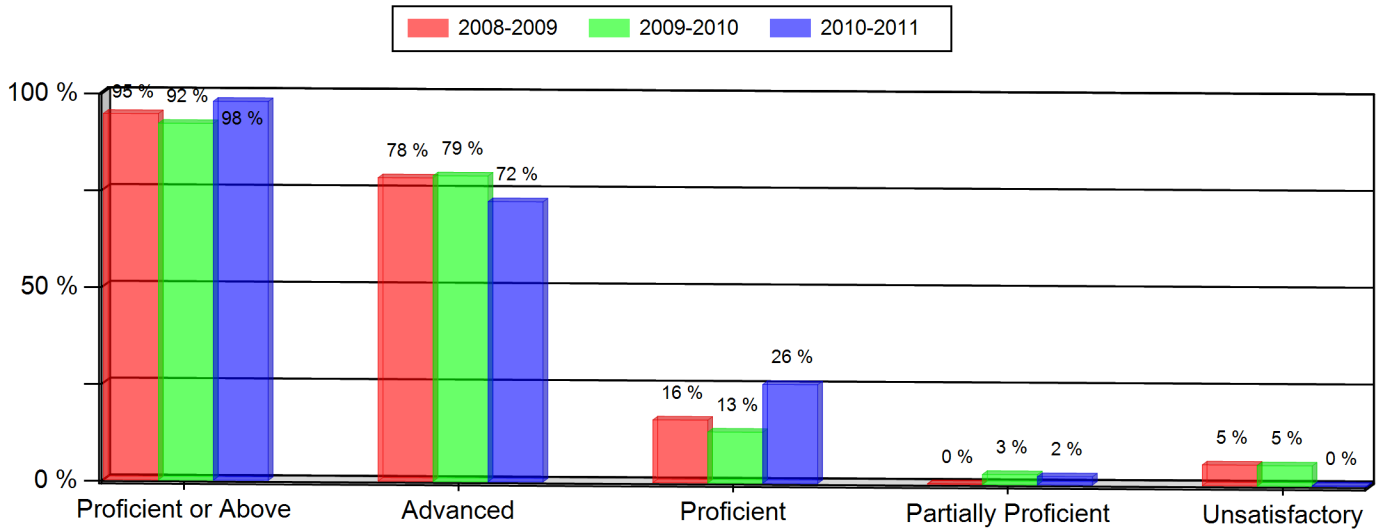
Notes:

- \* Indicates statistically significant change from previous year.
- \*\* Data not presented as fewer than 16 students are represented.
- Grades 5, 8, and 10 CSAP Science scores can only be displayed beginning with the 2007-08 school year, due to revised Science standards and CSAP scale scores in 2008.
- Federal changes to the 2010-11 collection of student race and ethnicity definitions may impact the trending of race and ethnicity data on this report between the school years 2009-10 and 2010-11.

**Parmalee Elementary**  
Colorado Student Assessment Program (CSAP)  
2010-2011

**MATH (All Students)**

Grade 4 --- All Students	2008-2009		2009-2010		2010-2011	
	Num.	Per.	Num.	Per.	Num.	Per.
Proficient or Above	35	95 %	35	92 %	46	98 %
Advanced	29	78 %	30	79 %	34	72 %
Proficient	6	16 %	5	13 %	12	26 %
Partially Proficient	0	0 %	1	3 %	1	2 %
Unsatisfactory	2	5 %	2	5 %	0	0 %
Not Tested	0	0 %	0	0 %	0	0 %
Number of Students	37		38		47	



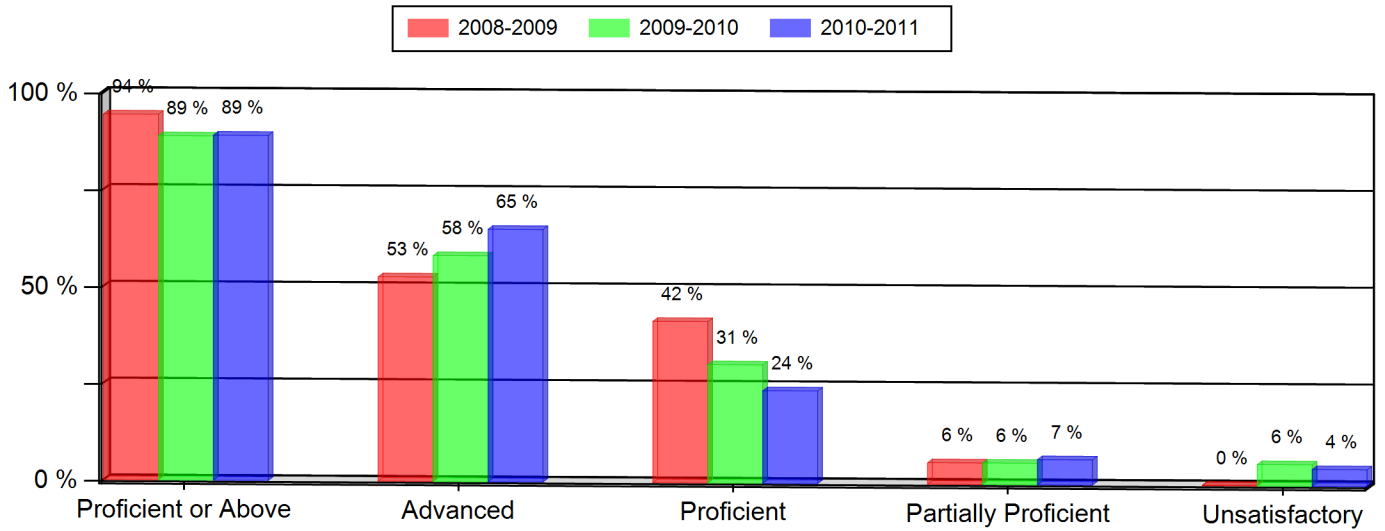
Notes:

- \* Indicates statistically significant change from previous year.
- \*\* Data not presented as fewer than 16 students are represented.
- Grades 5, 8, and 10 CSAP Science scores can only be displayed beginning with the 2007-08 school year, due to revised Science standards and CSAP scale scores in 2008.
- Federal changes to the 2010-11 collection of student race and ethnicity definitions may impact the trending of race and ethnicity data on this report between the school years 2009-10 and 2010-11.

**Parmalee Elementary**  
Colorado Student Assessment Program (CSAP)  
2010-2011

**MATH (All Students)**

Grade 5 --- All Students	2008-2009		2009-2010		2010-2011	
	Num.	Per.	Num.	Per.	Num.	Per.
Proficient or Above	34	94 %	32	89 %	41	89 %
Advanced	19	53 %	21	58 %	30	65 %
Proficient	15	42 %	11	31 %	11	24 %
Partially Proficient	2	6 %	2	6 %	3	7 %
Unsatisfactory	0	0 %	2	6 %	2	4 %
Not Tested	0	0 %	0	0 %	0	0 %
Number of Students	36		36		46	



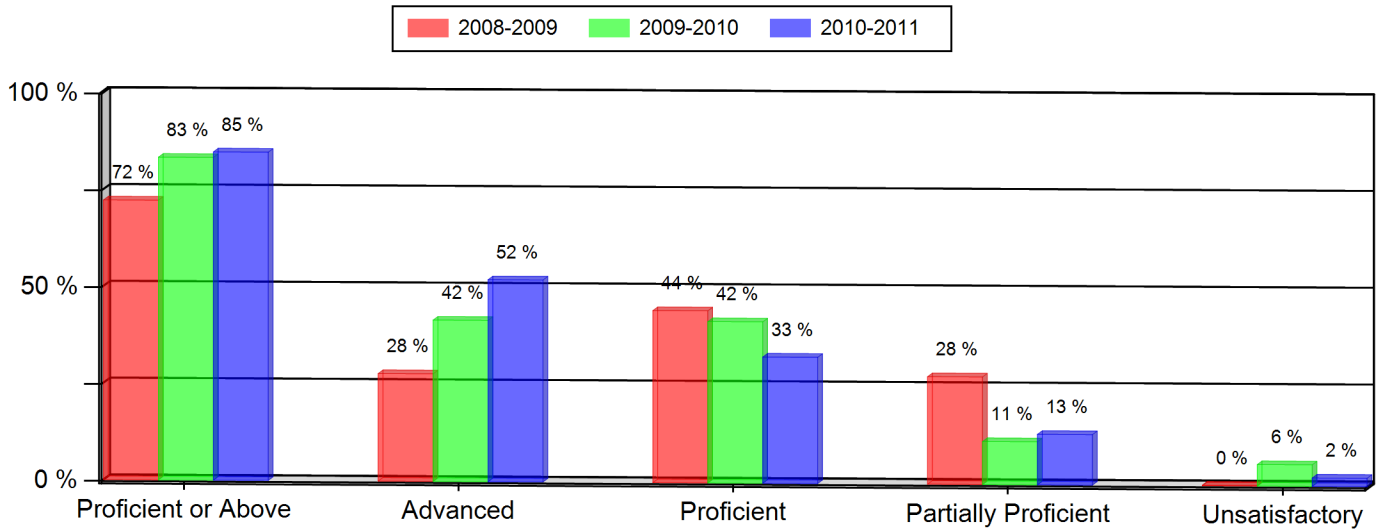
Notes:

- \* Indicates statistically significant change from previous year.
- \*\* Data not presented as fewer than 16 students are represented.
- Grades 5, 8, and 10 CSAP Science scores can only be displayed beginning with the 2007-08 school year, due to revised Science standards and CSAP scale scores in 2008.
- Federal changes to the 2010-11 collection of student race and ethnicity definitions may impact the trending of race and ethnicity data on this report between the school years 2009-10 and 2010-11.

**Parmalee Elementary**  
Colorado Student Assessment Program (CSAP)  
2010-2011

**SCIENCE (All Students)**

Grade 5 --- All Students	2008-2009		2009-2010		2010-2011	
	Num.	Per.	Num.	Per.	Num.	Per.
Proficient or Above	26	72 %	30	83 %	39	85 %
Advanced	10	28 %	15	42 %	24	52 %
Proficient	16	44 %	15	42 %	15	33 %
Partially Proficient	10	28 %	4	11 %	6	13 %
Unsatisfactory	0	0 %	2	6 %	1	2 %
Not Tested	0	0 %	0	0 %	0	0 %
Number of Students	36		36		46	



Notes:

- \* Indicates statistically significant change from previous year.
- \*\* Data not presented as fewer than 16 students are represented.
- Grades 5, 8, and 10 CSAP Science scores can only be displayed beginning with the 2007-08 school year, due to revised Science standards and CSAP scale scores in 2008.
- Federal changes to the 2010-11 collection of student race and ethnicity definitions may impact the trending of race and ethnicity data on this report between the school years 2009-10 and 2010-11.