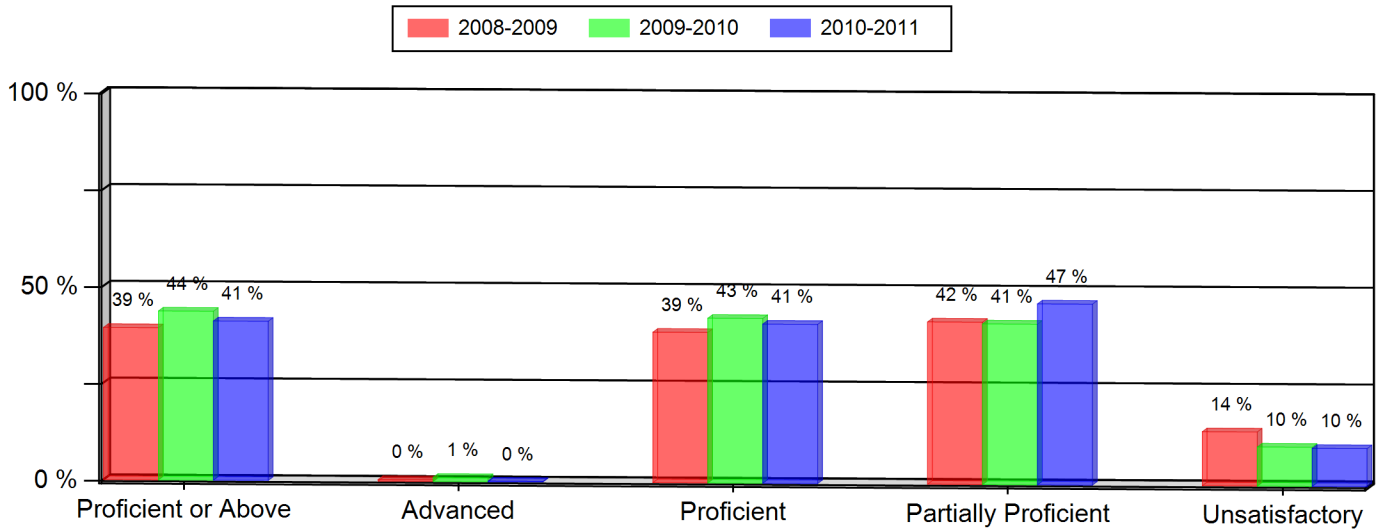


**Alameda High School**  
Colorado Student Assessment Program (CSAP)  
2010-2011

**READING (All Students)**

Grade 9 --- All Students	2008-2009		2009-2010		2010-2011	
	Num.	Per.	Num.	Per.	Num.	Per.
Proficient or Above	90	39 %	82	44 %	88	41 %
Advanced	1	0 %	2	1 %	0	0 %
Proficient	89	39 %	80	43 %	88	41 %
Partially Proficient	96	42 %	78	41 %	100	47 %
Unsatisfactory	32	14 %	19	10 %	21	10 %
Not Tested	11	5 %	9	5 %	5	2 %
Number of Students	229		188		214	



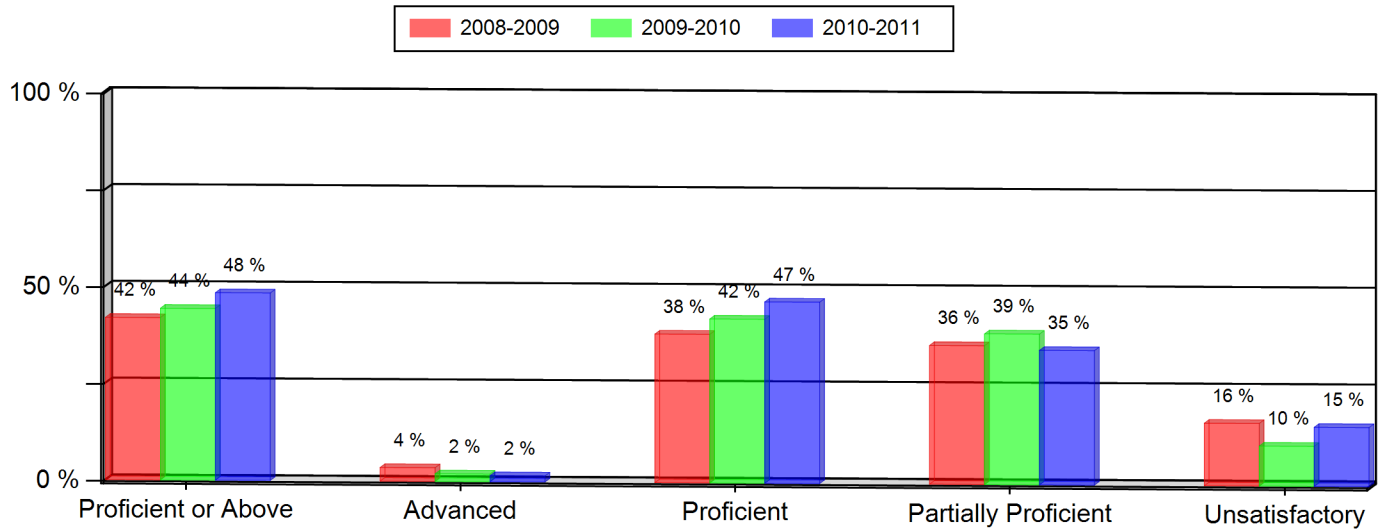
Notes:

- \* Indicates statistically significant change from previous year.
- \*\* Data not presented as fewer than 16 students are represented.
- Grades 5, 8, and 10 CSAP Science scores can only be displayed beginning with the 2007-08 school year, due to revised Science standards and CSAP scale scores in 2008.
- Federal changes to the 2010-11 collection of student race and ethnicity definitions may impact the trending of race and ethnicity data on this report between the school years 2009-10 and 2010-11.

**Alameda High School**  
Colorado Student Assessment Program (CSAP)  
2010-2011

**READING (All Students)**

Grade 10 --- All Students	2008-2009		2009-2010		2010-2011	
	Num.	Per.	Num.	Per.	Num.	Per.
Proficient or Above	83	42 %	90	44 %	92	48 %
Advanced	7	4 %	4	2 %	3	2 %
Proficient	76	38 %	86	42 %	89	47 %
Partially Proficient	71	36 %	79	39 %	66	35 %
Unsatisfactory	32	16 %	21	10 %	29	15 %
Not Tested	12	6 %	13	6 %	3	2 %
Number of Students	198		203		190	



Notes:

- \* Indicates statistically significant change from previous year.
- \*\* Data not presented as fewer than 16 students are represented.
- Grades 5, 8, and 10 CSAP Science scores can only be displayed beginning with the 2007-08 school year, due to revised Science standards and CSAP scale scores in 2008.
- Federal changes to the 2010-11 collection of student race and ethnicity definitions may impact the trending of race and ethnicity data on this report between the school years 2009-10 and 2010-11.

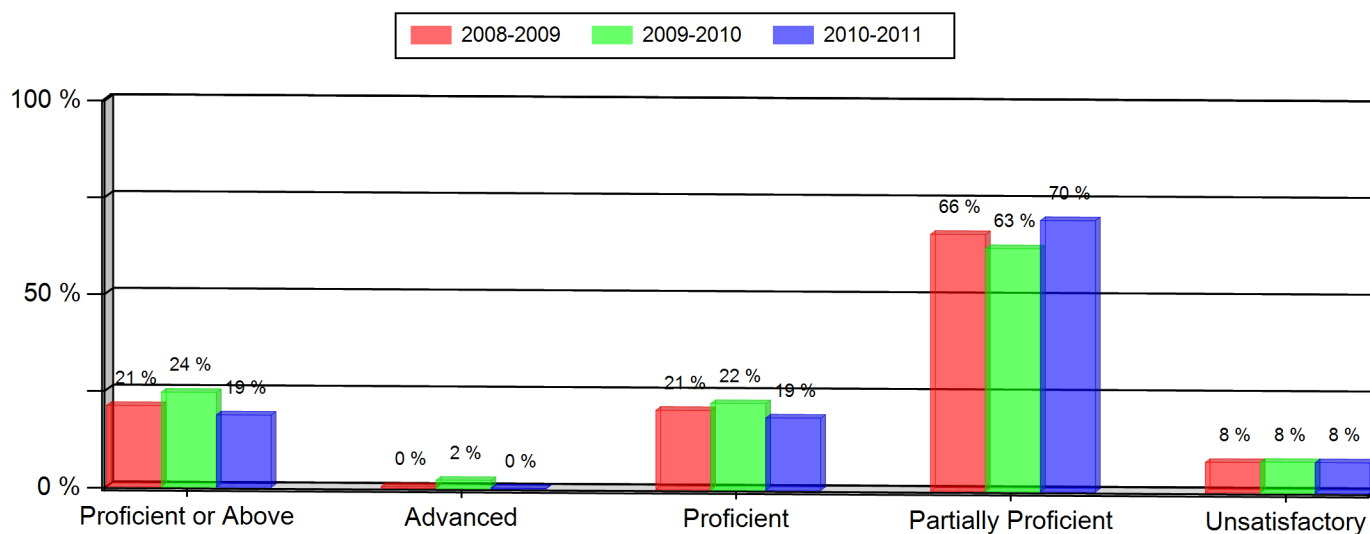
## Alameda High School

Colorado Student Assessment Program (CSAP)

2010-2011

### WRITING (All Students)

Grade 9 --- All Students	2008-2009		2009-2010		2010-2011	
	Num.	Per.	Num.	Per.	Num.	Per.
Proficient or Above	48	21 %	46	24 %	40	19 %
Advanced	1	0 %	4	2 %	0	0 %
Proficient	47	21 %	42	22 %	40	19 %
Partially Proficient	152	66 %	118	63 %	150	70 %
Unsatisfactory	18	8 %	15	8 %	17	8 %
Not Tested	11	5 %	9	5 %	7	3 %
Number of Students	229		188		214	



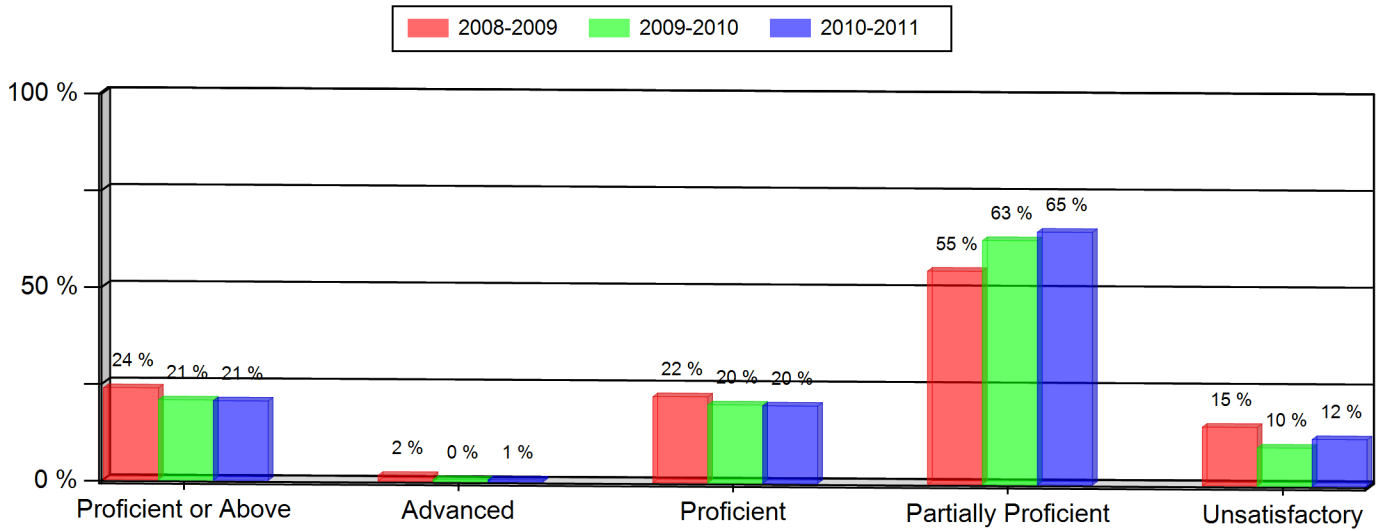
Notes:

- \* Indicates statistically significant change from previous year.
- \*\* Data not presented as fewer than 16 students are represented.
- Grades 5, 8, and 10 CSAP Science scores can only be displayed beginning with the 2007-08 school year, due to revised Science standards and CSAP scale scores in 2008.
- Federal changes to the 2010-11 collection of student race and ethnicity definitions may impact the trending of race and ethnicity data on this report between the school years 2009-10 and 2010-11.

**Alameda High School**  
Colorado Student Assessment Program (CSAP)  
2010-2011

**WRITING (All Students)**

Grade 10 --- All Students	2008-2009		2009-2010		2010-2011	
	Num.	Per.	Num.	Per.	Num.	Per.
Proficient or Above	47	24 %	42	21 %	39	21 %
Advanced	3	2 %	1	0 %	1	1 %
Proficient	44	22 %	41	20 %	38	20 %
Partially Proficient	109	55 %	128	63 %	124	65 %
Unsatisfactory	30	15 %	20	10 %	23	12 %
Not Tested	12	6 %	13	6 %	4	2 %
Number of Students	198		203		190	



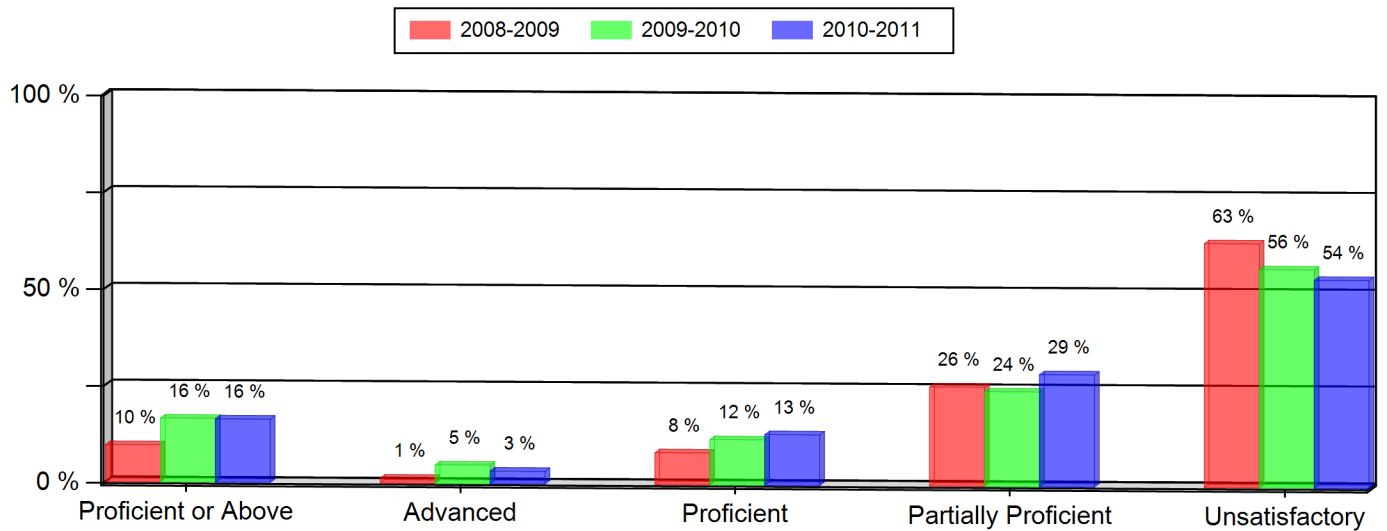
Notes:

- \* Indicates statistically significant change from previous year.
- \*\* Data not presented as fewer than 16 students are represented.
- Grades 5, 8, and 10 CSAP Science scores can only be displayed beginning with the 2007-08 school year, due to revised Science standards and CSAP scale scores in 2008.
- Federal changes to the 2010-11 collection of student race and ethnicity definitions may impact the trending of race and ethnicity data on this report between the school years 2009-10 and 2010-11.

**Alameda High School**  
Colorado Student Assessment Program (CSAP)  
2010-2011

**MATH (All Students)**

Grade 9 --- All Students	2008-2009		2009-2010		2010-2011	
	Num.	Per.	Num.	Per.	Num.	Per.
Proficient or Above	22	10 %	31	16 % *	35	16 %
Advanced	3	1 %	9	5 %	7	3 %
Proficient	19	8 %	22	12 %	28	13 %
Partially Proficient	59	26 %	46	24 %	62	29 %
Unsatisfactory	145	63 %	106	56 %	115	54 %
Not Tested	4	2 %	5	3 %	2	1 %
Number of Students	230		188		214	



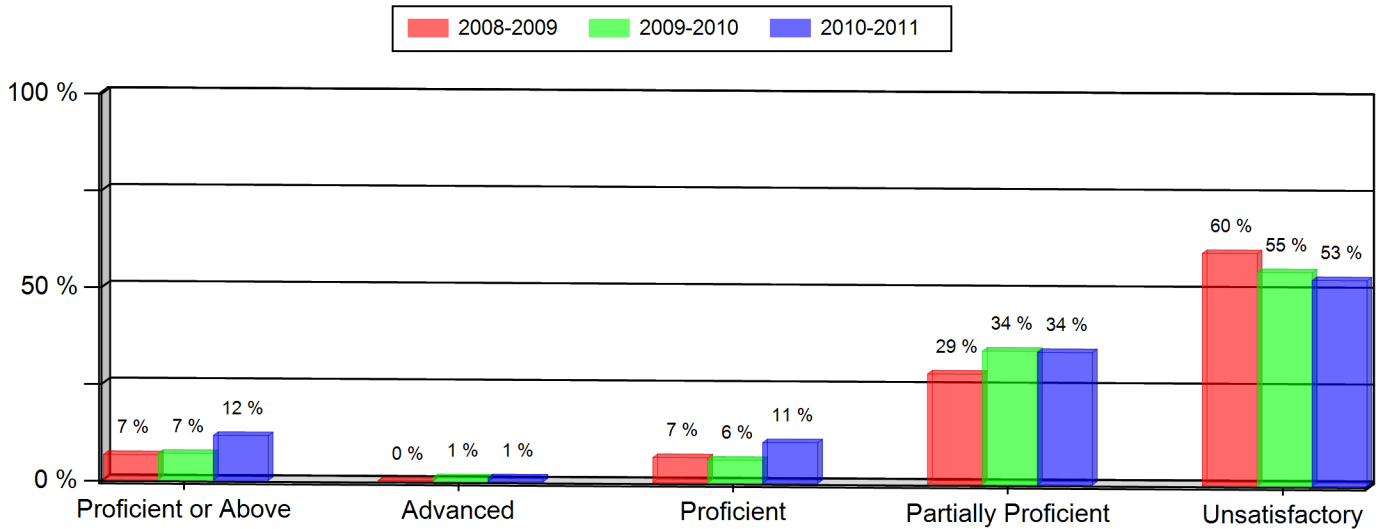
Notes:

- \* Indicates statistically significant change from previous year.
- \*\* Data not presented as fewer than 16 students are represented.
- Grades 5, 8, and 10 CSAP Science scores can only be displayed beginning with the 2007-08 school year, due to revised Science standards and CSAP scale scores in 2008.
- Federal changes to the 2010-11 collection of student race and ethnicity definitions may impact the trending of race and ethnicity data on this report between the school years 2009-10 and 2010-11.

**Alameda High School**  
Colorado Student Assessment Program (CSAP)  
2010-2011

**MATH (All Students)**

Grade 10 --- All Students	2008-2009		2009-2010		2010-2011	
	Num.	Per.	Num.	Per.	Num.	Per.
Proficient or Above	13	7 % *	14	7 %	22	12 %
Advanced	0	0 %	2	1 %	2	1 %
Proficient	13	7 %	12	6 %	20	11 %
Partially Proficient	57	29 %	70	34 %	65	34 %
Unsatisfactory	120	60 %	112	55 %	101	53 %
Not Tested	10	5 %	7	3 %	2	1 %
Number of Students	200		203		190	



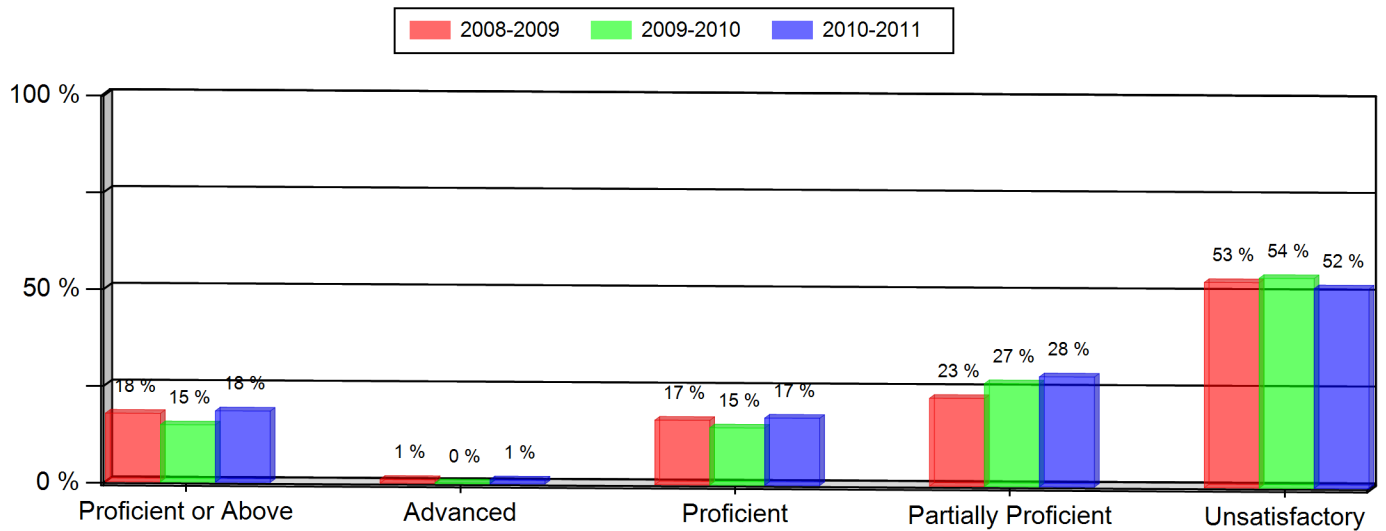
Notes:

- \* Indicates statistically significant change from previous year.
- \*\* Data not presented as fewer than 16 students are represented.
- Grades 5, 8, and 10 CSAP Science scores can only be displayed beginning with the 2007-08 school year, due to revised Science standards and CSAP scale scores in 2008.
- Federal changes to the 2010-11 collection of student race and ethnicity definitions may impact the trending of race and ethnicity data on this report between the school years 2009-10 and 2010-11.

**Alameda High School**  
Colorado Student Assessment Program (CSAP)  
2010-2011

**SCIENCE (All Students)**

Grade 10 --- All Students	2008-2009		2009-2010		2010-2011	
	Num.	Per.	Num.	Per.	Num.	Per.
Proficient or Above	35	18 %	30	15 %	35	18 %
Advanced	2	1 %	0	0 %	2	1 %
Proficient	33	17 %	30	15 %	33	17 %
Partially Proficient	45	23 %	54	27 %	54	28 %
Unsatisfactory	105	53 %	110	54 %	98	52 %
Not Tested	13	7 %	9	4 %	3	2 %
Number of Students	198		203		190	



Notes:

- \* Indicates statistically significant change from previous year.
- \*\* Data not presented as fewer than 16 students are represented.
- Grades 5, 8, and 10 CSAP Science scores can only be displayed beginning with the 2007-08 school year, due to revised Science standards and CSAP scale scores in 2008.
- Federal changes to the 2010-11 collection of student race and ethnicity definitions may impact the trending of race and ethnicity data on this report between the school years 2009-10 and 2010-11.