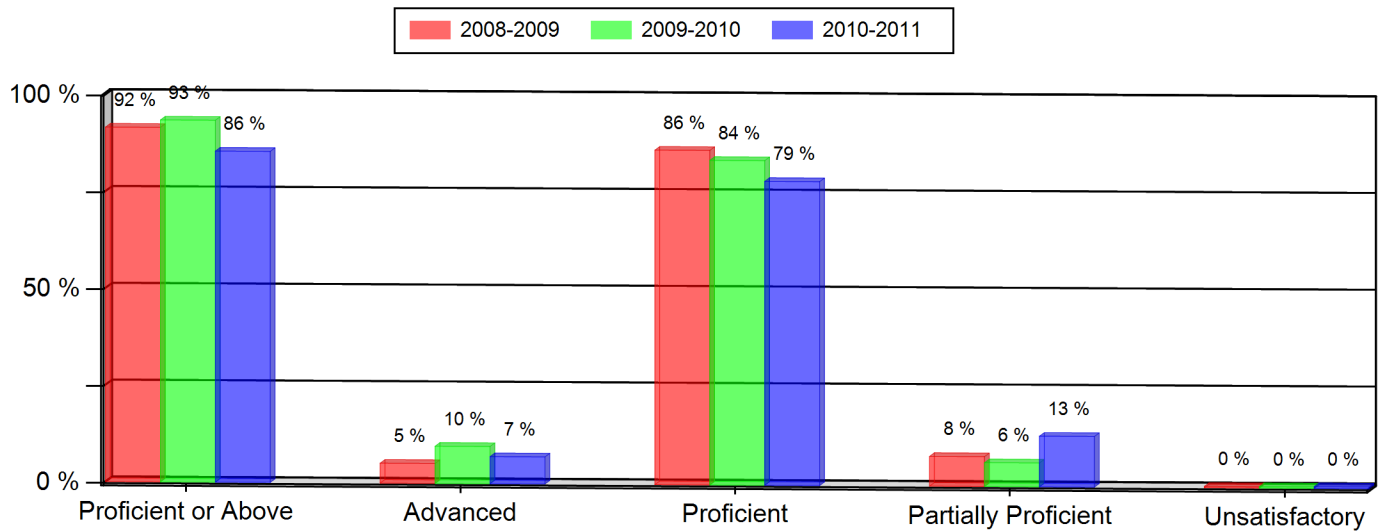


Evergreen High School
Colorado Student Assessment Program (CSAP)
2010-2011

READING (All Students)

| Grade 9 --- All Students | 2008-2009 | | 2009-2010 | | 2010-2011 | |
|--------------------------|-----------|------|-----------|------|-----------|--------|
| | Num. | Per. | Num. | Per. | Num. | Per. |
| Proficient or Above | 249 | 92 % | 243 | 93 % | 183 | 86 % * |
| Advanced | 14 | 5 % | 25 | 10 % | 15 | 7 % |
| Proficient | 235 | 86 % | 218 | 84 % | 168 | 79 % |
| Partially Proficient | 21 | 8 % | 16 | 6 % | 28 | 13 % |
| Unsatisfactory | 1 | 0 % | 1 | 0 % | 1 | 0 % |
| Not Tested | 1 | 0 % | 0 | 0 % | 2 | 1 % |
| Number of Students | 272 | | 260 | | 214 | |



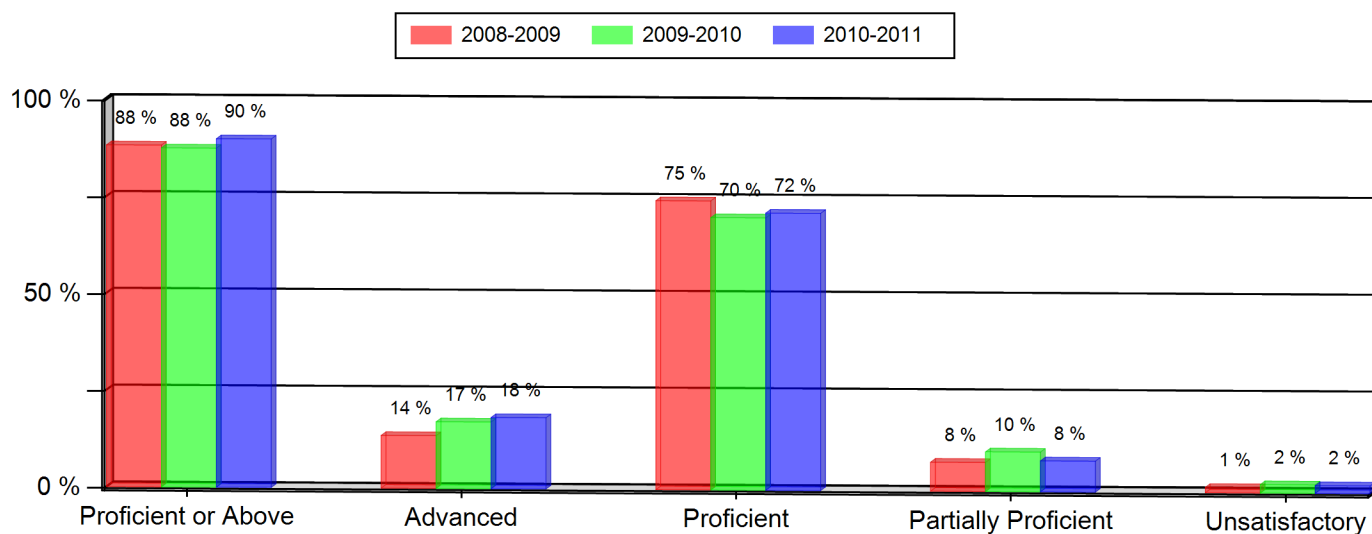
Notes:

- * Indicates statistically significant change from previous year.
- ** Data not presented as fewer than 16 students are represented.
- Grades 5, 8, and 10 CSAP Science scores can only be displayed beginning with the 2007-08 school year, due to revised Science standards and CSAP scale scores in 2008.
- Federal changes to the 2010-11 collection of student race and ethnicity definitions may impact the trending of race and ethnicity data on this report between the school years 2009-10 and 2010-11.

Evergreen High School
Colorado Student Assessment Program (CSAP)
2010-2011

READING (All Students)

| Grade 10 --- All Students | 2008-2009 | | 2009-2010 | | 2010-2011 | |
|---------------------------|-----------|--------|-----------|------|-----------|------|
| | Num. | Per. | Num. | Per. | Num. | Per. |
| Proficient or Above | 188 | 88 % * | 239 | 88 % | 225 | 90 % |
| Advanced | 29 | 14 % | 47 | 17 % | 46 | 18 % |
| Proficient | 159 | 75 % | 192 | 70 % | 179 | 72 % |
| Partially Proficient | 16 | 8 % | 28 | 10 % | 20 | 8 % |
| Unsatisfactory | 3 | 1 % | 6 | 2 % | 5 | 2 % |
| Not Tested | 6 | 3 % | 0 | 0 % | 0 | 0 % |
| Number of Students | 213 | | 273 | | 250 | |



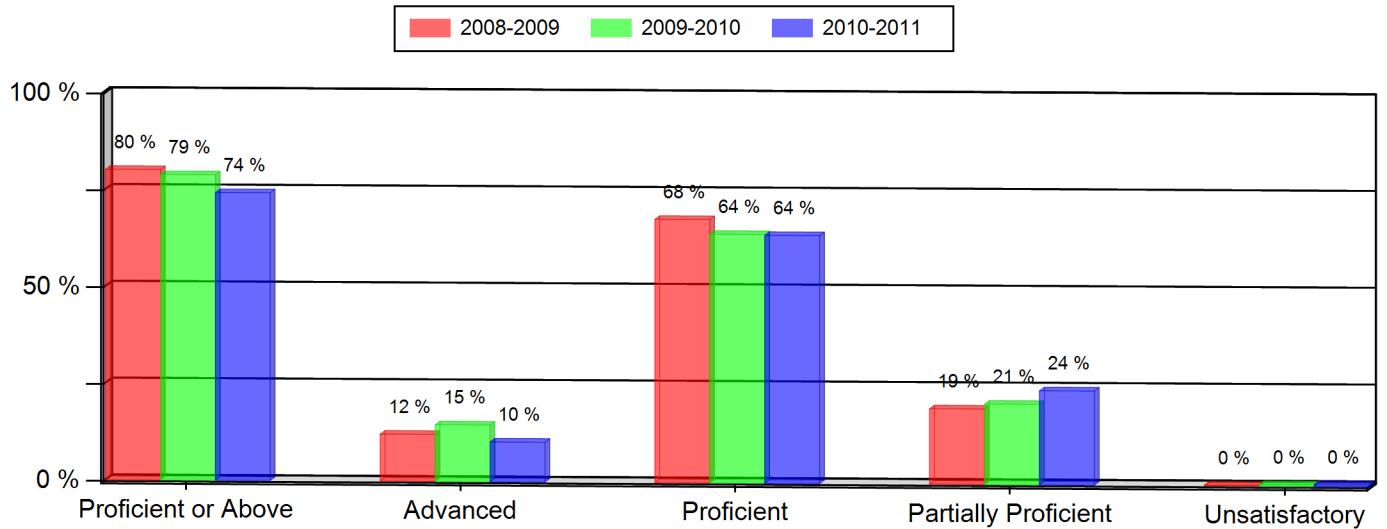
Notes:

- * Indicates statistically significant change from previous year.
- ** Data not presented as fewer than 16 students are represented.
- Grades 5, 8, and 10 CSAP Science scores can only be displayed beginning with the 2007-08 school year, due to revised Science standards and CSAP scale scores in 2008.
- Federal changes to the 2010-11 collection of student race and ethnicity definitions may impact the trending of race and ethnicity data on this report between the school years 2009-10 and 2010-11.

Evergreen High School
Colorado Student Assessment Program (CSAP)
2010-2011

WRITING (All Students)

| Grade 9 --- All Students | 2008-2009 | | 2009-2010 | | 2010-2011 | |
|--------------------------|-----------|--------|-----------|------|-----------|------|
| | Num. | Per. | Num. | Per. | Num. | Per. |
| Proficient or Above | 218 | 80 % * | 205 | 79 % | 159 | 74 % |
| Advanced | 33 | 12 % | 38 | 15 % | 22 | 10 % |
| Proficient | 185 | 68 % | 167 | 64 % | 137 | 64 % |
| Partially Proficient | 53 | 19 % | 54 | 21 % | 52 | 24 % |
| Unsatisfactory | 0 | 0 % | 1 | 0 % | 1 | 0 % |
| Not Tested | 1 | 0 % | 0 | 0 % | 2 | 1 % |
| Number of Students | 272 | | 260 | | 214 | |



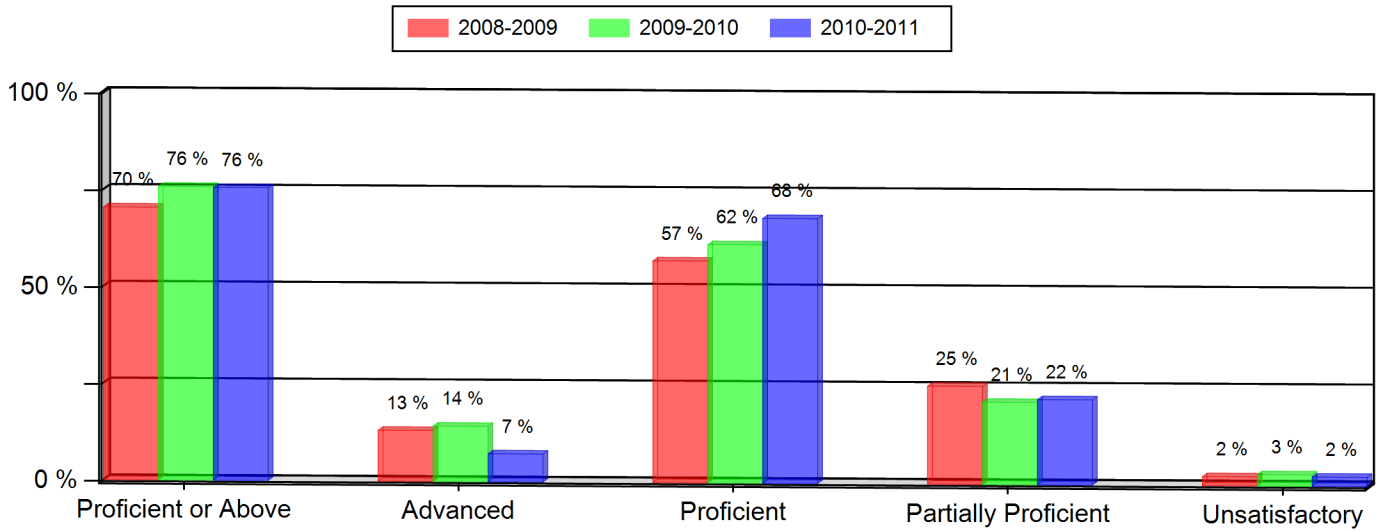
Notes:

- * Indicates statistically significant change from previous year.
- ** Data not presented as fewer than 16 students are represented.
- Grades 5, 8, and 10 CSAP Science scores can only be displayed beginning with the 2007-08 school year, due to revised Science standards and CSAP scale scores in 2008.
- Federal changes to the 2010-11 collection of student race and ethnicity definitions may impact the trending of race and ethnicity data on this report between the school years 2009-10 and 2010-11.

Evergreen High School
Colorado Student Assessment Program (CSAP)
2010-2011

WRITING (All Students)

| Grade 10 --- All Students | 2008-2009 | | 2009-2010 | | 2010-2011 | |
|---------------------------|-----------|------|-----------|------|-----------|------|
| | Num. | Per. | Num. | Per. | Num. | Per. |
| Proficient or Above | 150 | 70 % | 207 | 76 % | 189 | 76 % |
| Advanced | 28 | 13 % | 39 | 14 % | 18 | 7 % |
| Proficient | 122 | 57 % | 168 | 62 % | 171 | 68 % |
| Partially Proficient | 54 | 25 % | 58 | 21 % | 55 | 22 % |
| Unsatisfactory | 5 | 2 % | 8 | 3 % | 6 | 2 % |
| Not Tested | 4 | 2 % | 0 | 0 % | 0 | 0 % |
| Number of Students | 213 | | 273 | | 250 | |



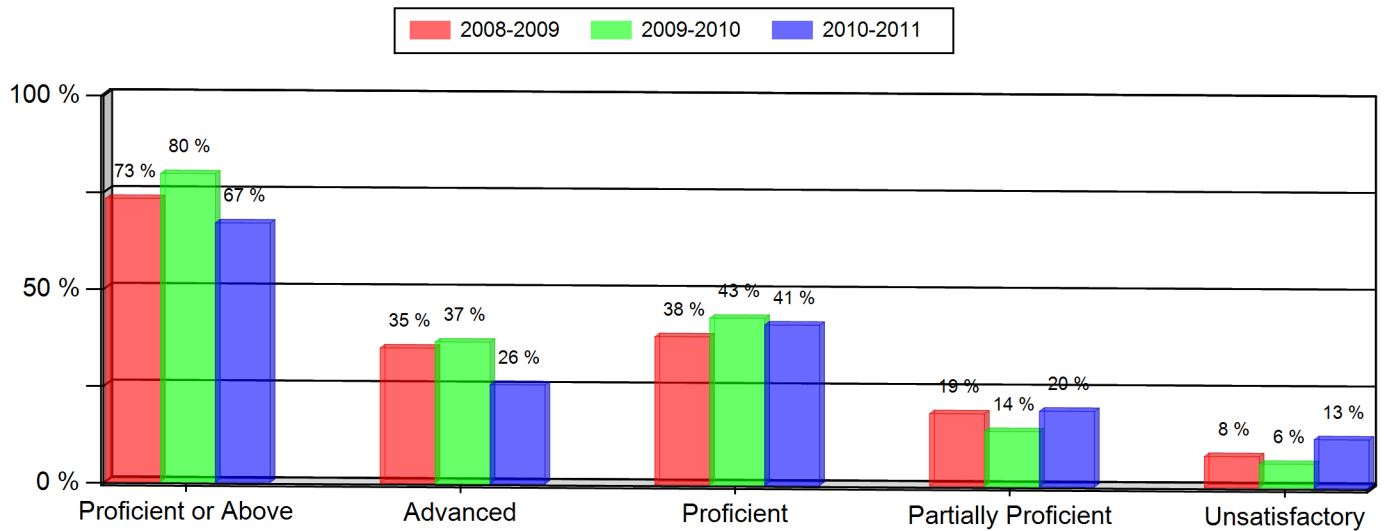
Notes:

- * Indicates statistically significant change from previous year.
- ** Data not presented as fewer than 16 students are represented.
- Grades 5, 8, and 10 CSAP Science scores can only be displayed beginning with the 2007-08 school year, due to revised Science standards and CSAP scale scores in 2008.
- Federal changes to the 2010-11 collection of student race and ethnicity definitions may impact the trending of race and ethnicity data on this report between the school years 2009-10 and 2010-11.

Evergreen High School
Colorado Student Assessment Program (CSAP)
2010-2011

MATH (All Students)

| Grade 9 --- All Students | 2008-2009 | | 2009-2010 | | 2010-2011 | |
|--------------------------|-----------|--------|-----------|--------|-----------|--------|
| | Num. | Per. | Num. | Per. | Num. | Per. |
| Proficient or Above | 199 | 73 % * | 207 | 80 % * | 144 | 67 % * |
| Advanced | 95 | 35 % | 95 | 37 % | 55 | 26 % |
| Proficient | 104 | 38 % | 112 | 43 % | 89 | 41 % |
| Partially Proficient | 51 | 19 % | 37 | 14 % | 42 | 20 % |
| Unsatisfactory | 22 | 8 % | 16 | 6 % | 27 | 13 % |
| Not Tested | 0 | 0 % | 0 | 0 % | 2 | 1 % |
| Number of Students | 272 | | 260 | | 215 | |



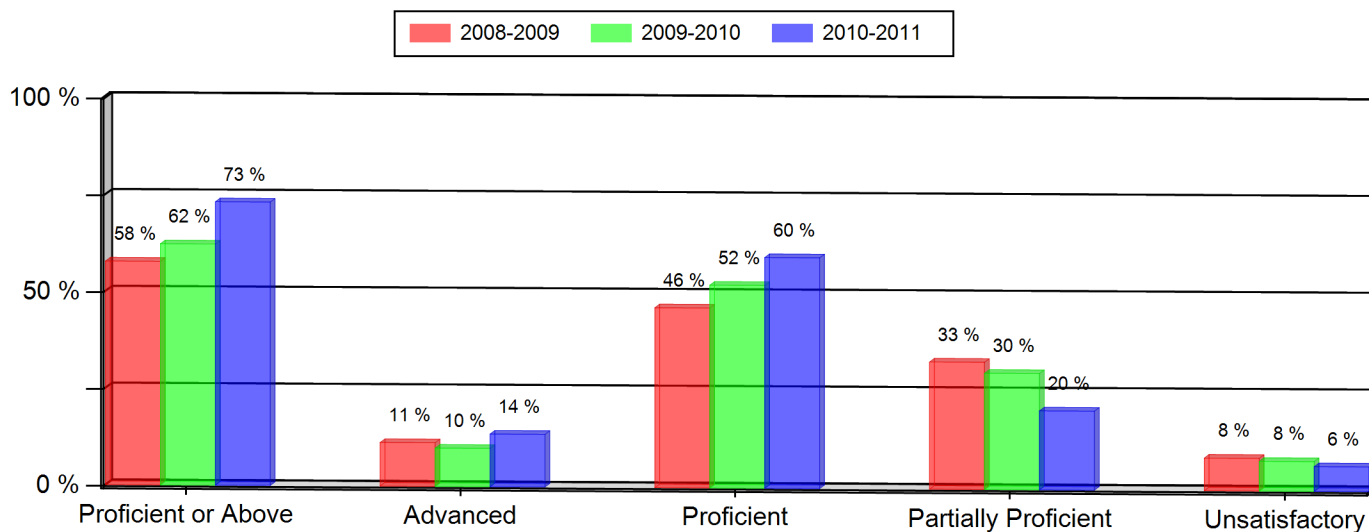
Notes:

- * Indicates statistically significant change from previous year.
- ** Data not presented as fewer than 16 students are represented.
- Grades 5, 8, and 10 CSAP Science scores can only be displayed beginning with the 2007-08 school year, due to revised Science standards and CSAP scale scores in 2008.
- Federal changes to the 2010-11 collection of student race and ethnicity definitions may impact the trending of race and ethnicity data on this report between the school years 2009-10 and 2010-11.

Evergreen High School
Colorado Student Assessment Program (CSAP)
2010-2011

MATH (All Students)

| Grade 10 --- All Students | 2008-2009 | | 2009-2010 | | 2010-2011 | |
|---------------------------|-----------|------|-----------|------|-----------|--------|
| | Num. | Per. | Num. | Per. | Num. | Per. |
| Proficient or Above | 123 | 58 % | 170 | 62 % | 183 | 73 % * |
| Advanced | 24 | 11 % | 27 | 10 % | 34 | 14 % |
| Proficient | 99 | 46 % | 143 | 52 % | 149 | 60 % |
| Partially Proficient | 70 | 33 % | 82 | 30 % | 51 | 20 % |
| Unsatisfactory | 18 | 8 % | 21 | 8 % | 16 | 6 % |
| Not Tested | 2 | 1 % | 0 | 0 % | 0 | 0 % |
| Number of Students | 213 | | 273 | | 250 | |



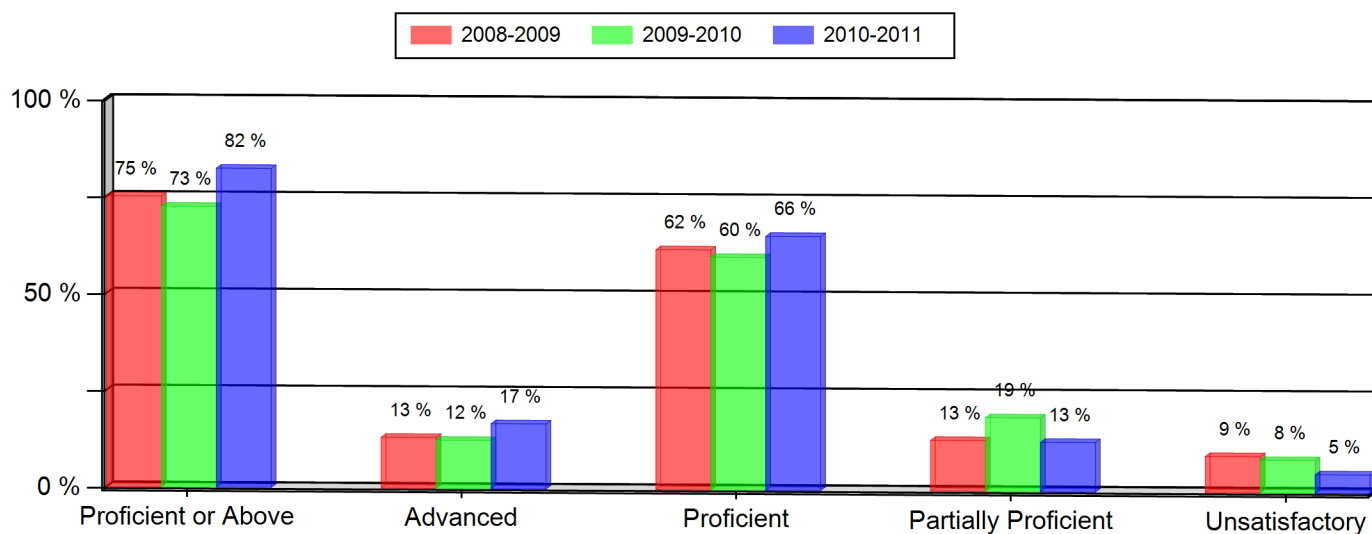
Notes:

- * Indicates statistically significant change from previous year.
- ** Data not presented as fewer than 16 students are represented.
- Grades 5, 8, and 10 CSAP Science scores can only be displayed beginning with the 2007-08 school year, due to revised Science standards and CSAP scale scores in 2008.
- Federal changes to the 2010-11 collection of student race and ethnicity definitions may impact the trending of race and ethnicity data on this report between the school years 2009-10 and 2010-11.

Evergreen High School
Colorado Student Assessment Program (CSAP)
2010-2011

SCIENCE (All Students)

| Grade 10 --- All Students | 2008-2009 | | 2009-2010 | | 2010-2011 | |
|---------------------------|-----------|--------|-----------|------|-----------|--------|
| | Num. | Per. | Num. | Per. | Num. | Per. |
| Proficient or Above | 160 | 75 % * | 198 | 73 % | 206 | 82 % * |
| Advanced | 28 | 13 % | 34 | 12 % | 42 | 17 % |
| Proficient | 132 | 62 % | 164 | 60 % | 164 | 66 % |
| Partially Proficient | 28 | 13 % | 52 | 19 % | 32 | 13 % |
| Unsatisfactory | 20 | 9 % | 23 | 8 % | 12 | 5 % |
| Not Tested | 5 | 2 % | 0 | 0 % | 0 | 0 % |
| Number of Students | 213 | | 273 | | 250 | |



Notes:

- * Indicates statistically significant change from previous year.
- ** Data not presented as fewer than 16 students are represented.
- Grades 5, 8, and 10 CSAP Science scores can only be displayed beginning with the 2007-08 school year, due to revised Science standards and CSAP scale scores in 2008.
- Federal changes to the 2010-11 collection of student race and ethnicity definitions may impact the trending of race and ethnicity data on this report between the school years 2009-10 and 2010-11.