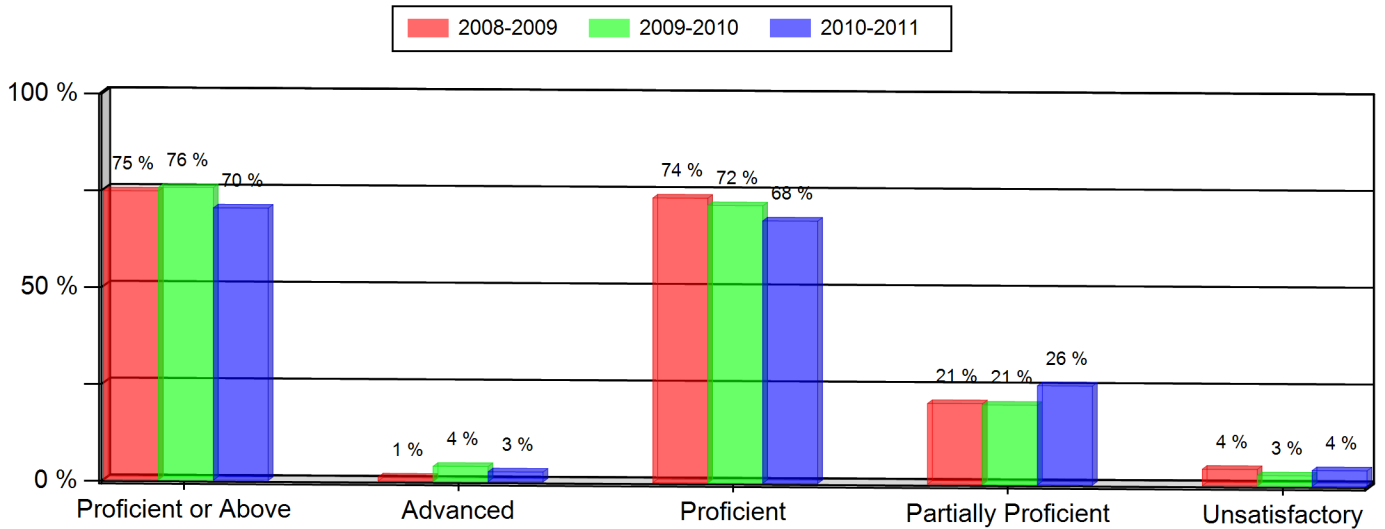


Pomona High School
Colorado Student Assessment Program (CSAP)
2010-2011

READING (All Students)

| Grade 9 --- All Students | 2008-2009 | | 2009-2010 | | 2010-2011 | |
|--------------------------|-----------|--------|-----------|------|-----------|--------|
| | Num. | Per. | Num. | Per. | Num. | Per. |
| Proficient or Above | 279 | 75 % * | 309 | 76 % | 275 | 70 % * |
| Advanced | 4 | 1 % | 16 | 4 % | 10 | 3 % |
| Proficient | 275 | 74 % | 293 | 72 % | 265 | 68 % |
| Partially Proficient | 78 | 21 % | 84 | 21 % | 100 | 26 % |
| Unsatisfactory | 16 | 4 % | 11 | 3 % | 16 | 4 % |
| Not Tested | 1 | 0 % | 5 | 1 % | 0 | 0 % |
| Number of Students | 374 | | 409 | | 391 | |



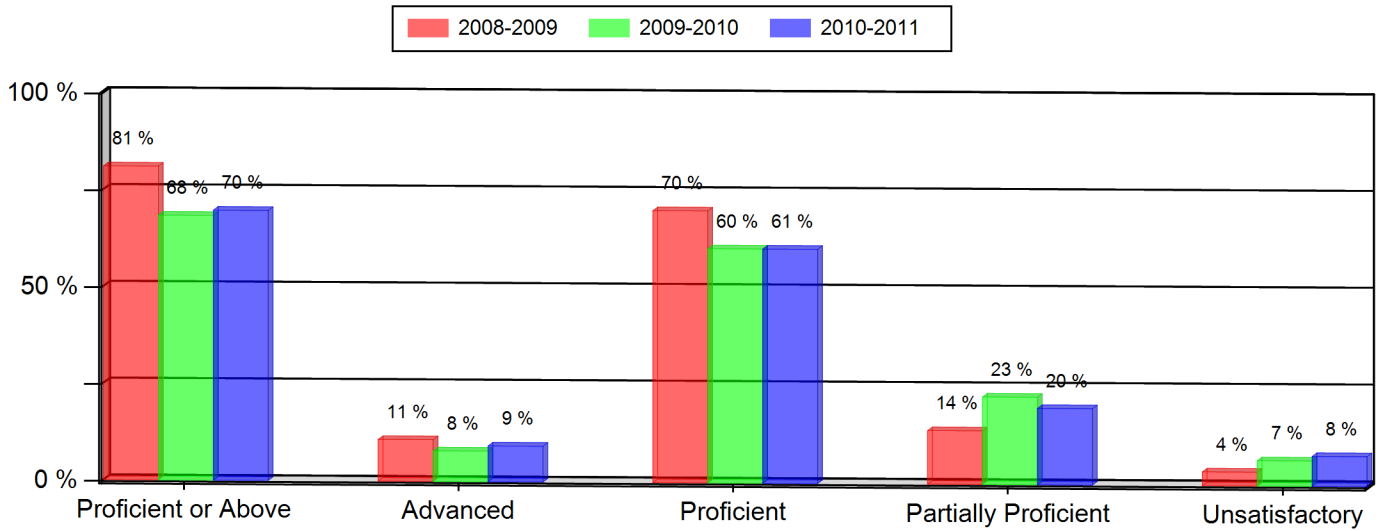
Notes:

- * Indicates statistically significant change from previous year.
- ** Data not presented as fewer than 16 students are represented.
- Grades 5, 8, and 10 CSAP Science scores can only be displayed beginning with the 2007-08 school year, due to revised Science standards and CSAP scale scores in 2008.
- Federal changes to the 2010-11 collection of student race and ethnicity definitions may impact the trending of race and ethnicity data on this report between the school years 2009-10 and 2010-11.

Pomona High School
Colorado Student Assessment Program (CSAP)
2010-2011

READING (All Students)

| Grade 10 --- All Students | 2008-2009 | | 2009-2010 | | 2010-2011 | |
|---------------------------|-----------|--------|-----------|--------|-----------|------|
| | Num. | Per. | Num. | Per. | Num. | Per. |
| Proficient or Above | 316 | 81 % * | 251 | 68 % * | 279 | 70 % |
| Advanced | 42 | 11 % | 29 | 8 % | 37 | 9 % |
| Proficient | 274 | 70 % | 222 | 60 % | 242 | 61 % |
| Partially Proficient | 54 | 14 % | 83 | 23 % | 79 | 20 % |
| Unsatisfactory | 14 | 4 % | 24 | 7 % | 31 | 8 % |
| Not Tested | 6 | 2 % | 9 | 2 % | 11 | 3 % |
| Number of Students | 390 | | 367 | | 400 | |



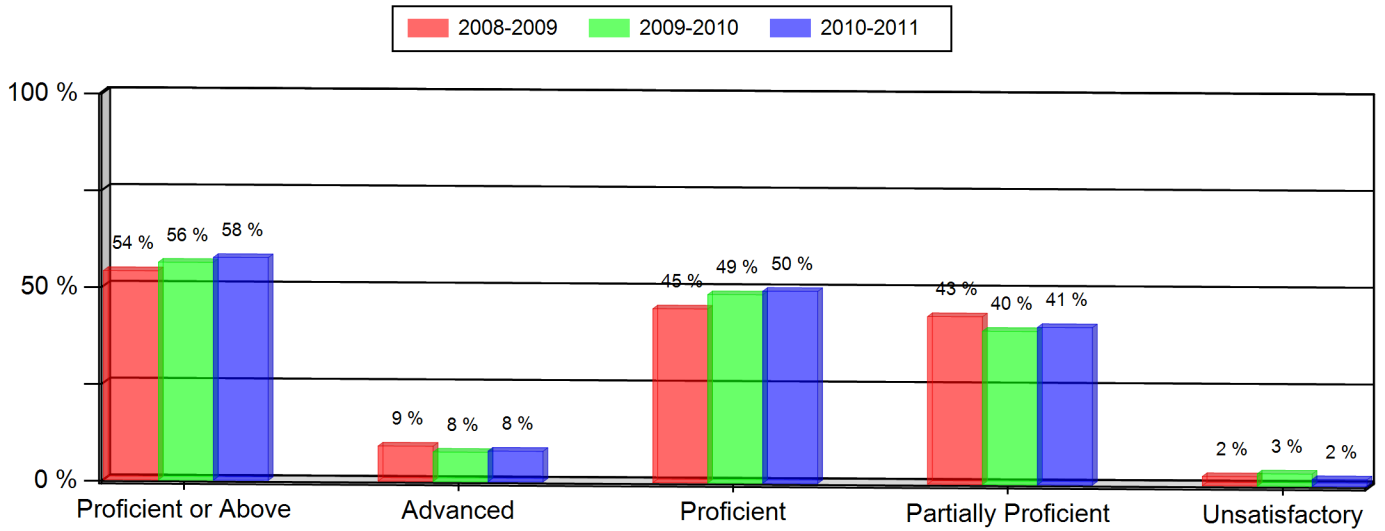
Notes:

- * Indicates statistically significant change from previous year.
- ** Data not presented as fewer than 16 students are represented.
- Grades 5, 8, and 10 CSAP Science scores can only be displayed beginning with the 2007-08 school year, due to revised Science standards and CSAP scale scores in 2008.
- Federal changes to the 2010-11 collection of student race and ethnicity definitions may impact the trending of race and ethnicity data on this report between the school years 2009-10 and 2010-11.

Pomona High School
Colorado Student Assessment Program (CSAP)
2010-2011

WRITING (All Students)

| Grade 9 --- All Students | 2008-2009 | | 2009-2010 | | 2010-2011 | |
|--------------------------|-----------|--------|-----------|------|-----------|------|
| | Num. | Per. | Num. | Per. | Num. | Per. |
| Proficient or Above | 202 | 54 % * | 230 | 56 % | 225 | 58 % |
| Advanced | 34 | 9 % | 31 | 8 % | 31 | 8 % |
| Proficient | 168 | 45 % | 199 | 49 % | 194 | 50 % |
| Partially Proficient | 162 | 43 % | 162 | 40 % | 159 | 41 % |
| Unsatisfactory | 9 | 2 % | 13 | 3 % | 7 | 2 % |
| Not Tested | 1 | 0 % | 4 | 1 % | 0 | 0 % |
| Number of Students | 374 | | 409 | | 391 | |



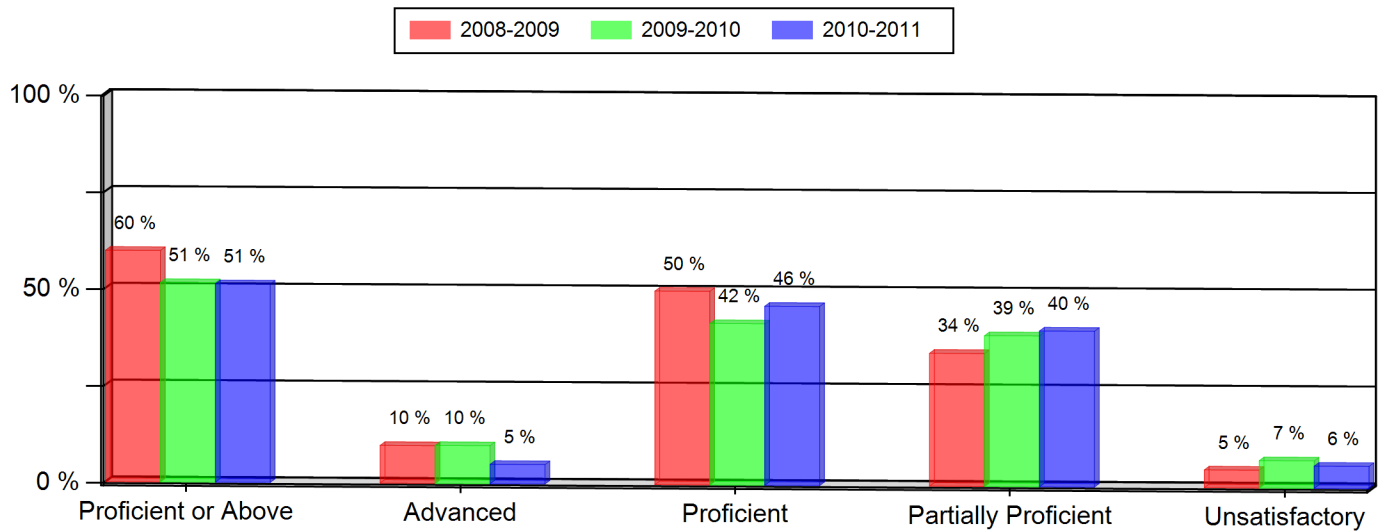
Notes:

- * Indicates statistically significant change from previous year.
- ** Data not presented as fewer than 16 students are represented.
- Grades 5, 8, and 10 CSAP Science scores can only be displayed beginning with the 2007-08 school year, due to revised Science standards and CSAP scale scores in 2008.
- Federal changes to the 2010-11 collection of student race and ethnicity definitions may impact the trending of race and ethnicity data on this report between the school years 2009-10 and 2010-11.

Pomona High School
Colorado Student Assessment Program (CSAP)
2010-2011

WRITING (All Students)

| Grade 10 --- All Students | 2008-2009 | | 2009-2010 | | 2010-2011 | |
|---------------------------|-----------|------|-----------|--------|-----------|------|
| | Num. | Per. | Num. | Per. | Num. | Per. |
| Proficient or Above | 233 | 60 % | 189 | 51 % * | 205 | 51 % |
| Advanced | 38 | 10 % | 36 | 10 % | 20 | 5 % |
| Proficient | 195 | 50 % | 153 | 42 % | 185 | 46 % |
| Partially Proficient | 134 | 34 % | 143 | 39 % | 161 | 40 % |
| Unsatisfactory | 18 | 5 % | 26 | 7 % | 23 | 6 % |
| Not Tested | 5 | 1 % | 9 | 2 % | 11 | 3 % |
| Number of Students | 390 | | 367 | | 400 | |



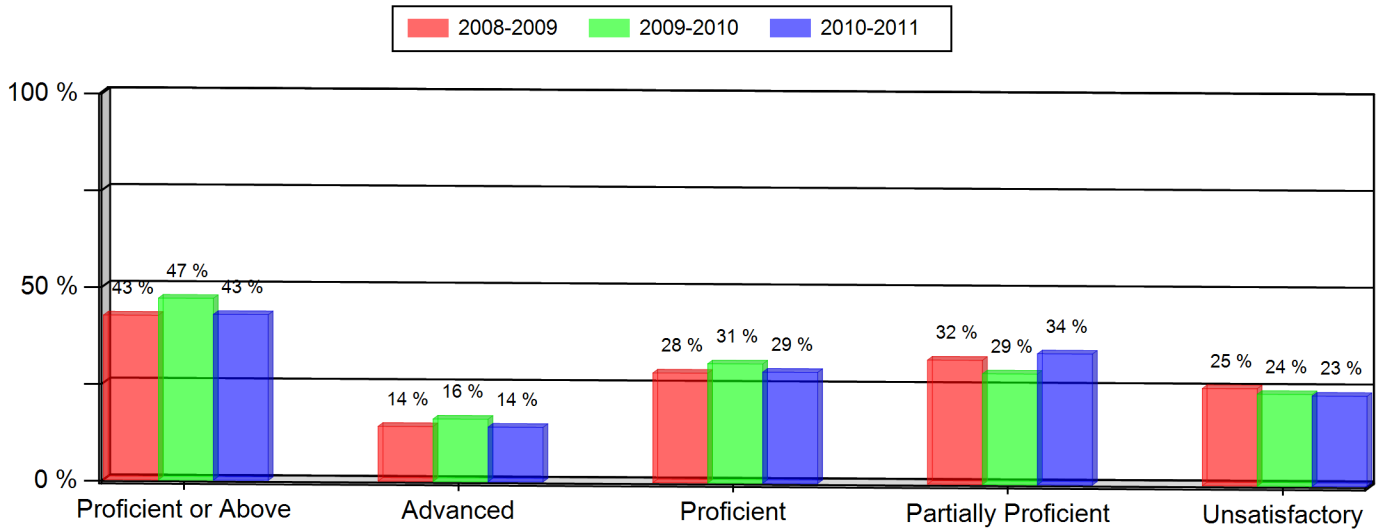
Notes:

- * Indicates statistically significant change from previous year.
- ** Data not presented as fewer than 16 students are represented.
- Grades 5, 8, and 10 CSAP Science scores can only be displayed beginning with the 2007-08 school year, due to revised Science standards and CSAP scale scores in 2008.
- Federal changes to the 2010-11 collection of student race and ethnicity definitions may impact the trending of race and ethnicity data on this report between the school years 2009-10 and 2010-11.

Pomona High School
Colorado Student Assessment Program (CSAP)
2010-2011

MATH (All Students)

| Grade 9 --- All Students | 2008-2009 | | 2009-2010 | | 2010-2011 | |
|--------------------------|-----------|--------|-----------|------|-----------|------|
| | Num. | Per. | Num. | Per. | Num. | Per. |
| Proficient or Above | 159 | 43 % * | 192 | 47 % | 167 | 43 % |
| Advanced | 53 | 14 % | 66 | 16 % | 55 | 14 % |
| Proficient | 106 | 28 % | 126 | 31 % | 112 | 29 % |
| Partially Proficient | 120 | 32 % | 117 | 29 % | 132 | 34 % |
| Unsatisfactory | 94 | 25 % | 97 | 24 % | 91 | 23 % |
| Not Tested | 1 | 0 % | 3 | 1 % | 0 | 0 % |
| Number of Students | 374 | | 409 | | 390 | |



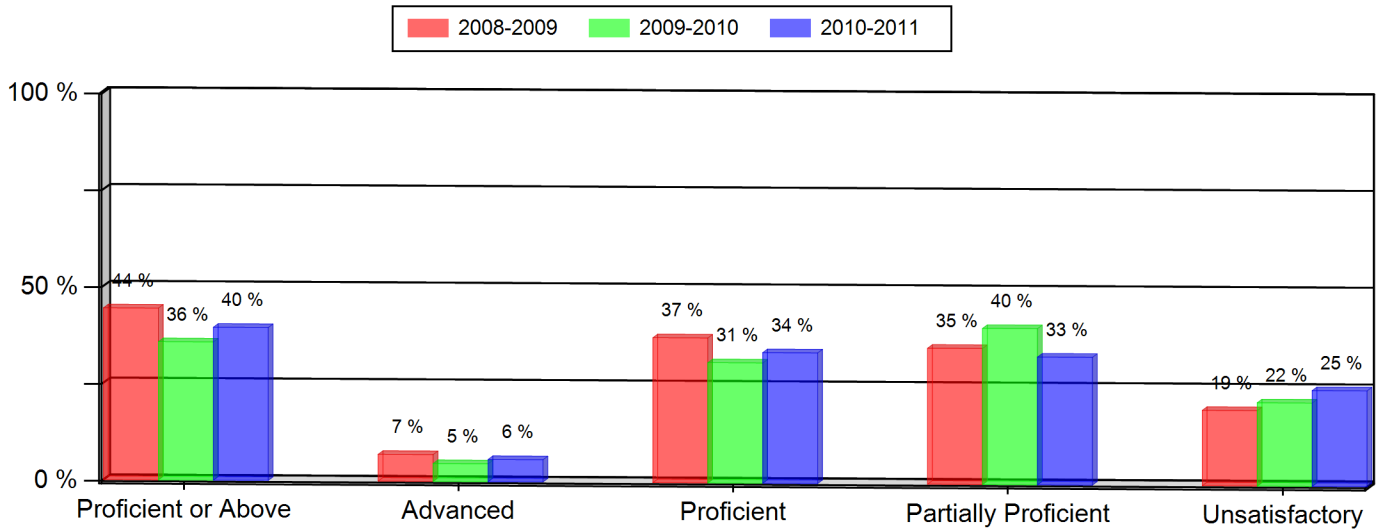
Notes:

- * Indicates statistically significant change from previous year.
- ** Data not presented as fewer than 16 students are represented.
- Grades 5, 8, and 10 CSAP Science scores can only be displayed beginning with the 2007-08 school year, due to revised Science standards and CSAP scale scores in 2008.
- Federal changes to the 2010-11 collection of student race and ethnicity definitions may impact the trending of race and ethnicity data on this report between the school years 2009-10 and 2010-11.

Pomona High School
Colorado Student Assessment Program (CSAP)
2010-2011

MATH (All Students)

| Grade 10 --- All Students | 2008-2009 | | 2009-2010 | | 2010-2011 | |
|---------------------------|-----------|------|-----------|--------|-----------|------|
| | Num. | Per. | Num. | Per. | Num. | Per. |
| Proficient or Above | 173 | 44 % | 131 | 36 % * | 158 | 40 % |
| Advanced | 27 | 7 % | 17 | 5 % | 23 | 6 % |
| Proficient | 146 | 37 % | 114 | 31 % | 135 | 34 % |
| Partially Proficient | 137 | 35 % | 148 | 40 % | 132 | 33 % |
| Unsatisfactory | 76 | 19 % | 79 | 22 % | 99 | 25 % |
| Not Tested | 4 | 1 % | 9 | 2 % | 11 | 3 % |
| Number of Students | 390 | | 367 | | 400 | |



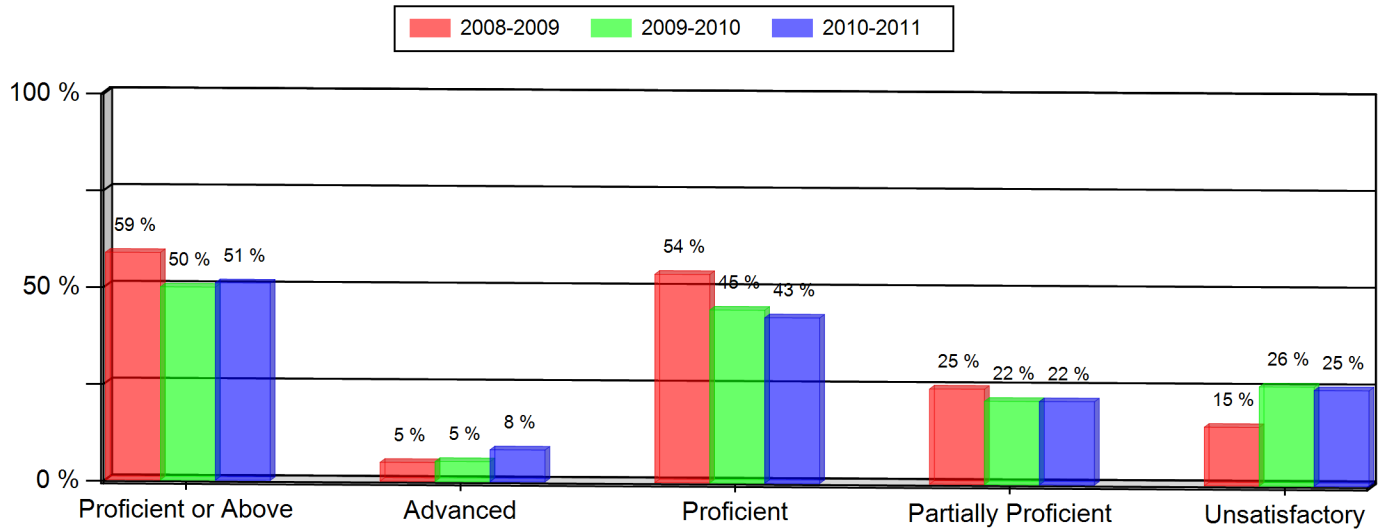
Notes:

- * Indicates statistically significant change from previous year.
- ** Data not presented as fewer than 16 students are represented.
- Grades 5, 8, and 10 CSAP Science scores can only be displayed beginning with the 2007-08 school year, due to revised Science standards and CSAP scale scores in 2008.
- Federal changes to the 2010-11 collection of student race and ethnicity definitions may impact the trending of race and ethnicity data on this report between the school years 2009-10 and 2010-11.

Pomona High School
Colorado Student Assessment Program (CSAP)
2010-2011

SCIENCE (All Students)

| Grade 10 --- All Students | 2008-2009 | | 2009-2010 | | 2010-2011 | |
|---------------------------|-----------|--------|-----------|--------|-----------|------|
| | Num. | Per. | Num. | Per. | Num. | Per. |
| Proficient or Above | 229 | 59 % * | 183 | 50 % * | 204 | 51 % |
| Advanced | 19 | 5 % | 19 | 5 % | 33 | 8 % |
| Proficient | 210 | 54 % | 164 | 45 % | 171 | 43 % |
| Partially Proficient | 96 | 25 % | 79 | 22 % | 86 | 22 % |
| Unsatisfactory | 59 | 15 % | 94 | 26 % | 99 | 25 % |
| Not Tested | 6 | 2 % | 11 | 3 % | 11 | 3 % |
| Number of Students | 390 | | 367 | | 400 | |



Notes:

- * Indicates statistically significant change from previous year.
- ** Data not presented as fewer than 16 students are represented.
- Grades 5, 8, and 10 CSAP Science scores can only be displayed beginning with the 2007-08 school year, due to revised Science standards and CSAP scale scores in 2008.
- Federal changes to the 2010-11 collection of student race and ethnicity definitions may impact the trending of race and ethnicity data on this report between the school years 2009-10 and 2010-11.