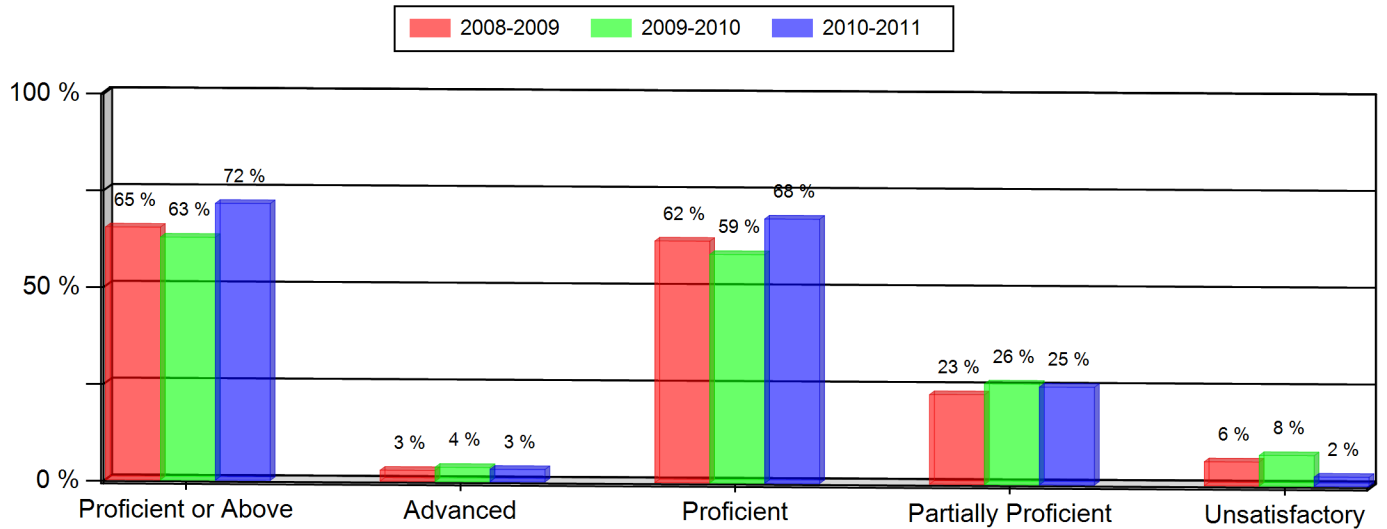


Wheat Ridge High School
Colorado Student Assessment Program (CSAP)
2010-2011

READING (All Students)

Grade 9 --- All Students	2008-2009		2009-2010		2010-2011	
	Num.	Per.	Num.	Per.	Num.	Per.
Proficient or Above	231	65 %	222	63 %	266	72 % *
Advanced	10	3 %	13	4 %	12	3 %
Proficient	221	62 %	209	59 %	254	68 %
Partially Proficient	82	23 %	92	26 %	94	25 %
Unsatisfactory	22	6 %	28	8 %	9	2 %
Not Tested	19	5 %	12	3 %	3	1 %
Number of Students	354		354		372	



Notes:

- * Indicates statistically significant change from previous year.
- ** Data not presented as fewer than 16 students are represented.
- Grades 5, 8, and 10 CSAP Science scores can only be displayed beginning with the 2007-08 school year, due to revised Science standards and CSAP scale scores in 2008.
- Federal changes to the 2010-11 collection of student race and ethnicity definitions may impact the trending of race and ethnicity data on this report between the school years 2009-10 and 2010-11.

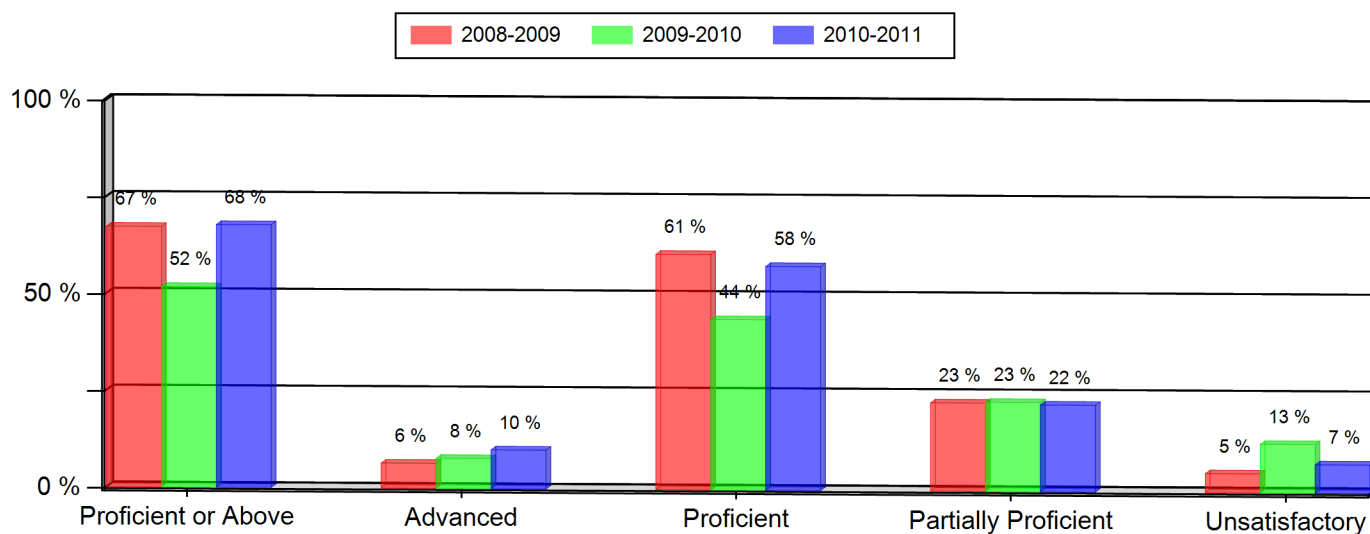
Wheat Ridge High School

Colorado Student Assessment Program (CSAP)

2010-2011

READING (All Students)

Grade 10 --- All Students	2008-2009		2009-2010		2010-2011	
	Num.	Per.	Num.	Per.	Num.	Per.
Proficient or Above	218	67 %	173	52 % *	230	68 % *
Advanced	21	6 %	26	8 %	34	10 %
Proficient	197	61 %	147	44 %	196	58 %
Partially Proficient	74	23 %	77	23 %	76	22 %
Unsatisfactory	16	5 %	42	13 %	25	7 %
Not Tested	16	5 %	42	13 %	8	2 %
Number of Students	324		334		339	



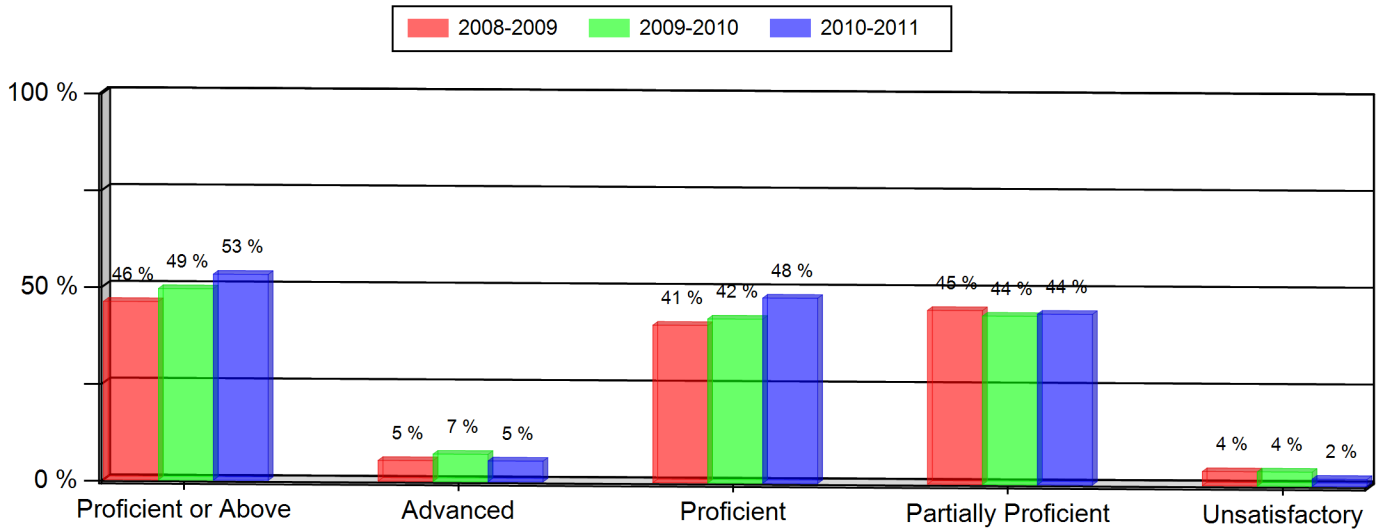
Notes:

1. * Indicates statistically significant change from previous year.
2. ** Data not presented as fewer than 16 students are represented.
3. Grades 5, 8, and 10 CSAP Science scores can only be displayed beginning with the 2007-08 school year, due to revised Science standards and CSAP scale scores in 2008.
4. Federal changes to the 2010-11 collection of student race and ethnicity definitions may impact the trending of race and ethnicity data on this report between the school years 2009-10 and 2010-11.

Wheat Ridge High School
Colorado Student Assessment Program (CSAP)
2010-2011

WRITING (All Students)

Grade 9 --- All Students	2008-2009		2009-2010		2010-2011	
	Num.	Per.	Num.	Per.	Num.	Per.
Proficient or Above	163	46 %	175	49 %	198	53 %
Advanced	19	5 %	25	7 %	20	5 %
Proficient	144	41 %	150	42 %	178	48 %
Partially Proficient	159	45 %	154	44 %	164	44 %
Unsatisfactory	13	4 %	13	4 %	7	2 %
Not Tested	19	5 %	12	3 %	3	1 %
Number of Students	354		354		372	



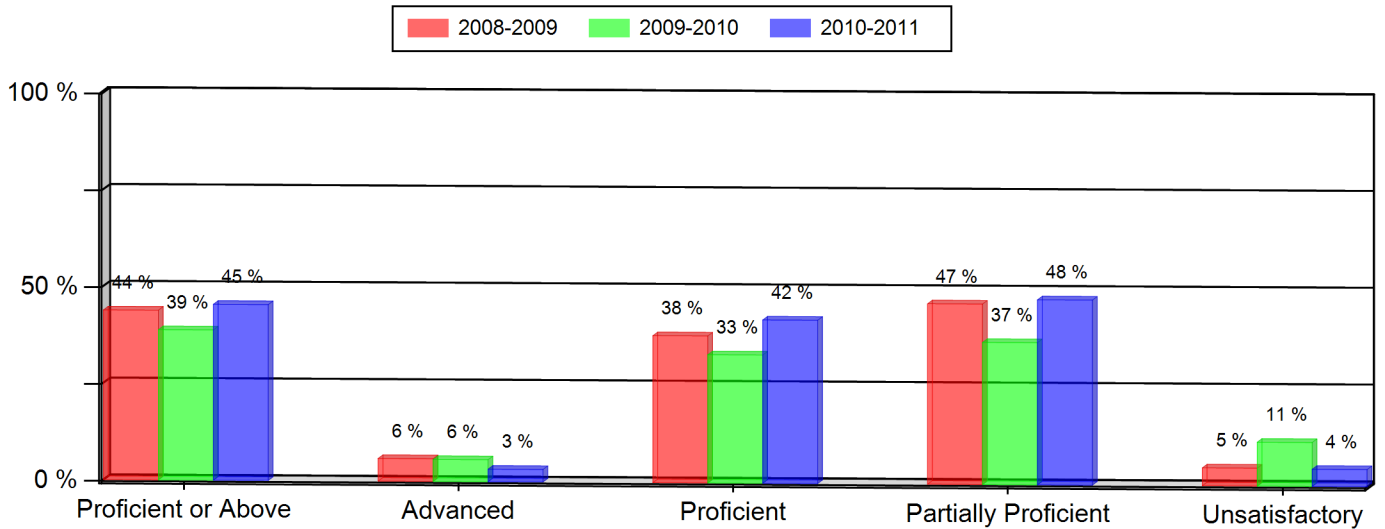
Notes:

- * Indicates statistically significant change from previous year.
- ** Data not presented as fewer than 16 students are represented.
- Grades 5, 8, and 10 CSAP Science scores can only be displayed beginning with the 2007-08 school year, due to revised Science standards and CSAP scale scores in 2008.
- Federal changes to the 2010-11 collection of student race and ethnicity definitions may impact the trending of race and ethnicity data on this report between the school years 2009-10 and 2010-11.

Wheat Ridge High School
Colorado Student Assessment Program (CSAP)
2010-2011

WRITING (All Students)

Grade 10 --- All Students	2008-2009		2009-2010		2010-2011	
	Num.	Per.	Num.	Per.	Num.	Per.
Proficient or Above	142	44 % *	130	39 %	154	45 % *
Advanced	19	6 %	19	6 %	11	3 %
Proficient	123	38 %	111	33 %	143	42 %
Partially Proficient	151	47 %	123	37 %	162	48 %
Unsatisfactory	15	5 %	38	11 %	15	4 %
Not Tested	16	5 %	44	13 %	8	2 %
Number of Students	324		335		339	



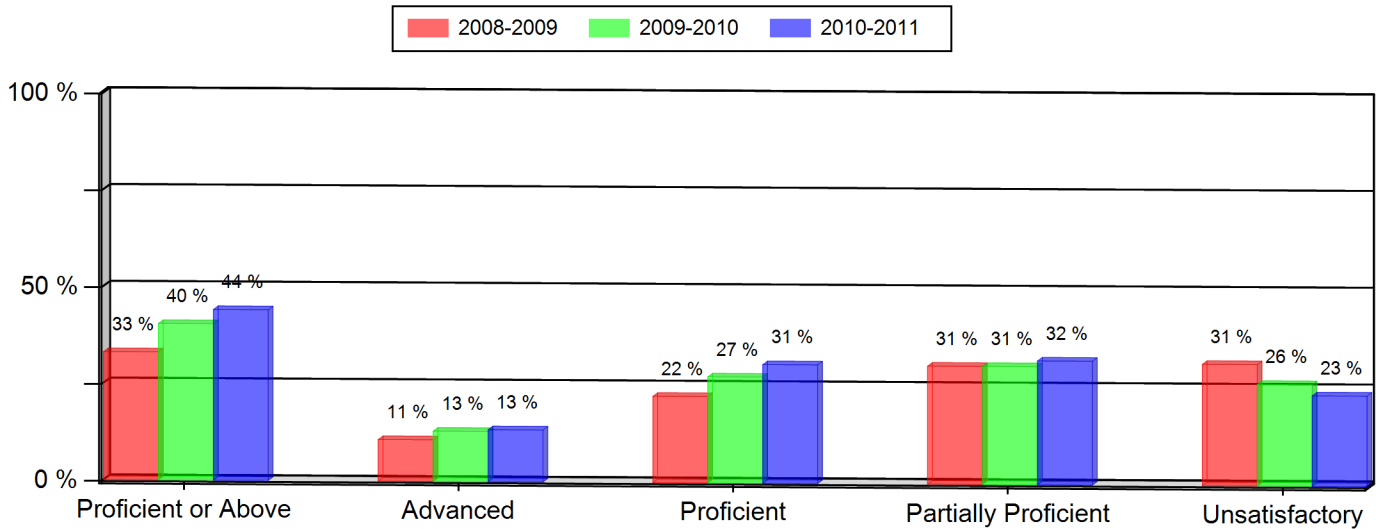
Notes:

- * Indicates statistically significant change from previous year.
- ** Data not presented as fewer than 16 students are represented.
- Grades 5, 8, and 10 CSAP Science scores can only be displayed beginning with the 2007-08 school year, due to revised Science standards and CSAP scale scores in 2008.
- Federal changes to the 2010-11 collection of student race and ethnicity definitions may impact the trending of race and ethnicity data on this report between the school years 2009-10 and 2010-11.

Wheat Ridge High School
Colorado Student Assessment Program (CSAP)
2010-2011

MATH (All Students)

Grade 9 --- All Students	2008-2009		2009-2010		2010-2011	
	Num.	Per.	Num.	Per.	Num.	Per.
Proficient or Above	117	33 %	143	40 % *	164	44 %
Advanced	38	11 %	46	13 %	50	13 %
Proficient	79	22 %	97	27 %	114	31 %
Partially Proficient	108	31 %	108	31 %	119	32 %
Unsatisfactory	111	31 %	93	26 %	87	23 %
Not Tested	18	5 %	10	3 %	2	1 %
Number of Students	354		354		372	



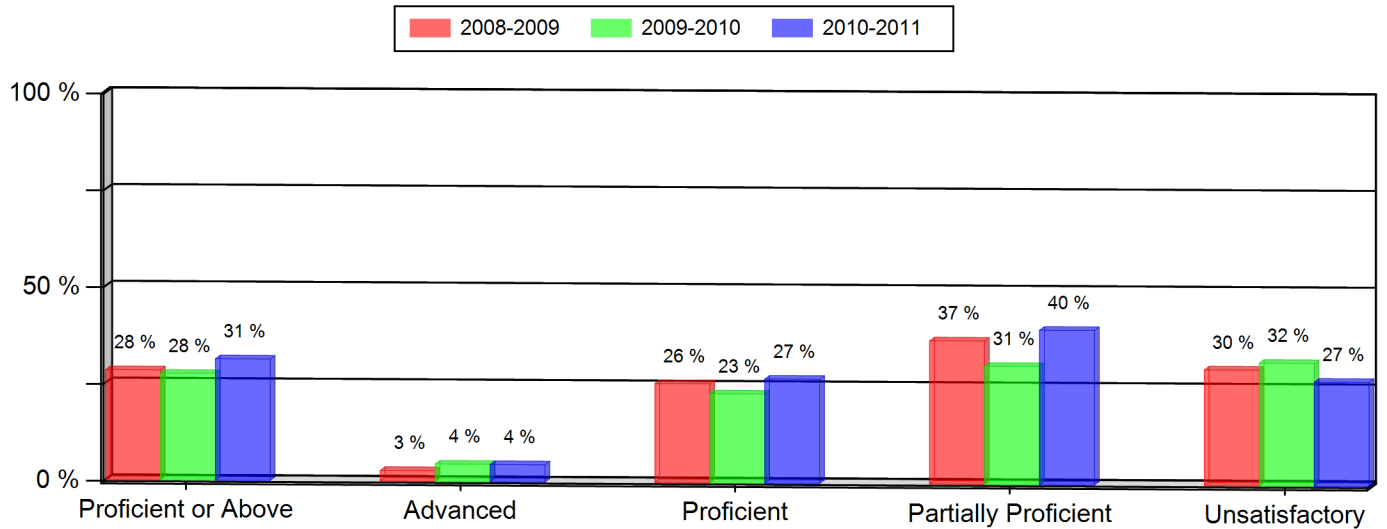
Notes:

- * Indicates statistically significant change from previous year.
- ** Data not presented as fewer than 16 students are represented.
- Grades 5, 8, and 10 CSAP Science scores can only be displayed beginning with the 2007-08 school year, due to revised Science standards and CSAP scale scores in 2008.
- Federal changes to the 2010-11 collection of student race and ethnicity definitions may impact the trending of race and ethnicity data on this report between the school years 2009-10 and 2010-11.

Wheat Ridge High School
Colorado Student Assessment Program (CSAP)
2010-2011

MATH (All Students)

Grade 10 --- All Students	2008-2009		2009-2010		2010-2011	
	Num.	Per.	Num.	Per.	Num.	Per.
Proficient or Above	92	28 %	92	28 %	106	31 %
Advanced	9	3 %	15	4 %	15	4 %
Proficient	83	26 %	77	23 %	91	27 %
Partially Proficient	120	37 %	102	31 %	135	40 %
Unsatisfactory	97	30 %	106	32 %	91	27 %
Not Tested	15	5 %	34	10 %	6	2 %
Number of Students	324		334		338	



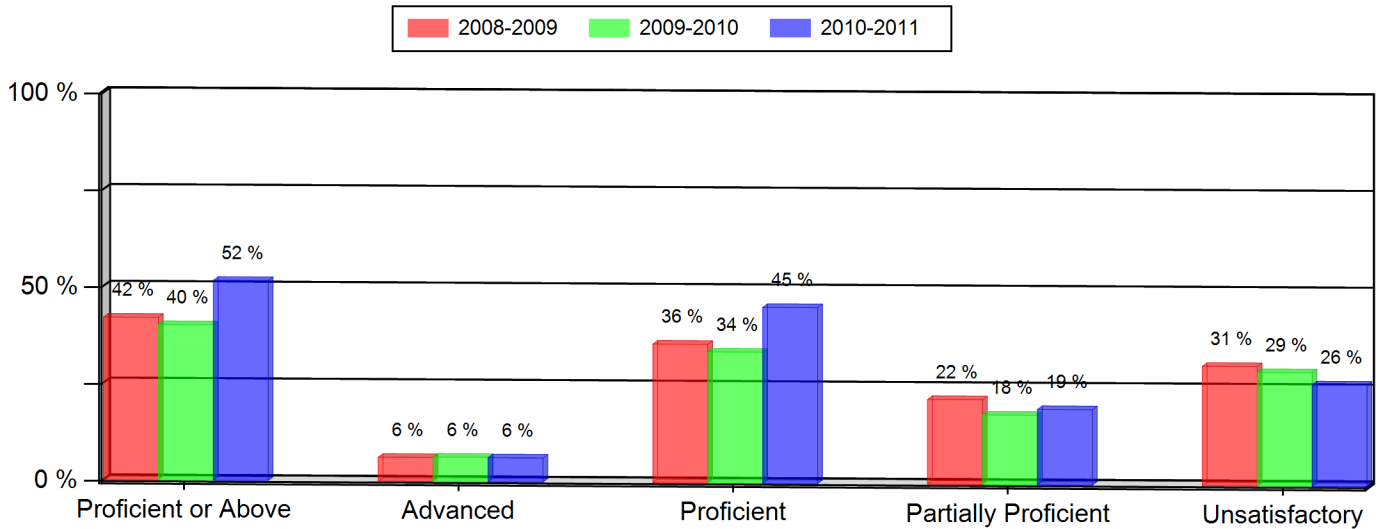
Notes:

- * Indicates statistically significant change from previous year.
- ** Data not presented as fewer than 16 students are represented.
- Grades 5, 8, and 10 CSAP Science scores can only be displayed beginning with the 2007-08 school year, due to revised Science standards and CSAP scale scores in 2008.
- Federal changes to the 2010-11 collection of student race and ethnicity definitions may impact the trending of race and ethnicity data on this report between the school years 2009-10 and 2010-11.

Wheat Ridge High School
Colorado Student Assessment Program (CSAP)
2010-2011

SCIENCE (All Students)

Grade 10 --- All Students	2008-2009		2009-2010		2010-2011	
	Num.	Per.	Num.	Per.	Num.	Per.
Proficient or Above	136	42 % *	134	40 %	175	52 % *
Advanced	20	6 %	21	6 %	21	6 %
Proficient	116	36 %	113	34 %	154	45 %
Partially Proficient	71	22 %	60	18 %	66	19 %
Unsatisfactory	100	31 %	98	29 %	89	26 %
Not Tested	17	5 %	42	13 %	9	3 %
Number of Students	324		334		339	



Notes:

- * Indicates statistically significant change from previous year.
- ** Data not presented as fewer than 16 students are represented.
- Grades 5, 8, and 10 CSAP Science scores can only be displayed beginning with the 2007-08 school year, due to revised Science standards and CSAP scale scores in 2008.
- Federal changes to the 2010-11 collection of student race and ethnicity definitions may impact the trending of race and ethnicity data on this report between the school years 2009-10 and 2010-11.