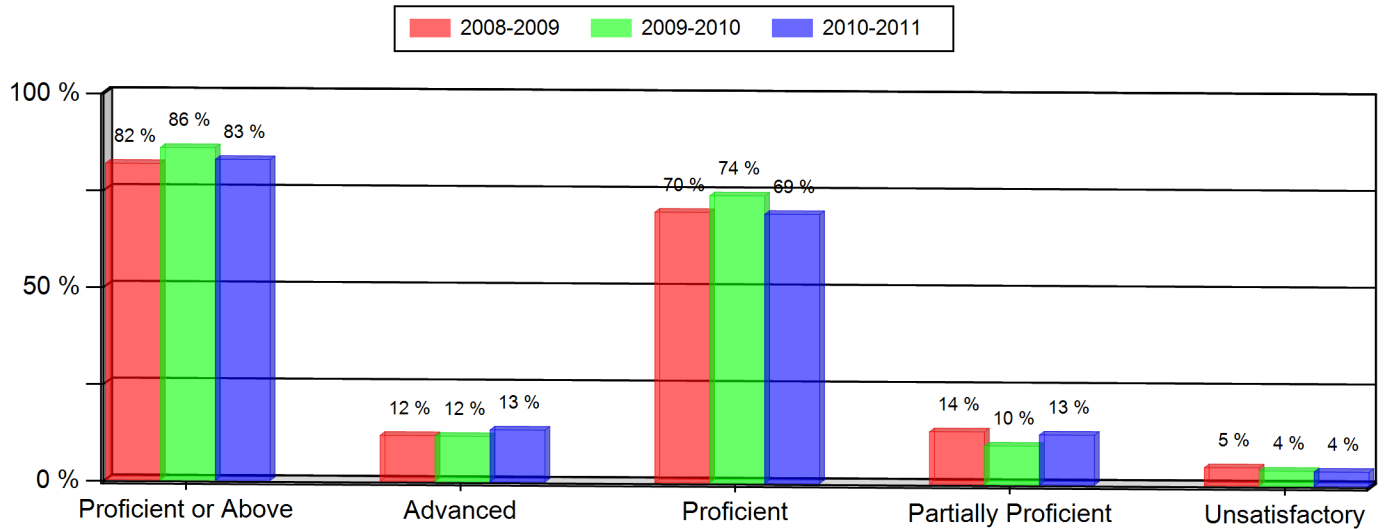


**Summit Ridge Middle School**  
Colorado Student Assessment Program (CSAP)  
2010-2011

**READING (All Students)**

Grade 7 --- All Students	2008-2009		2009-2010		2010-2011	
	Num.	Per.	Num.	Per.	Num.	Per.
Proficient or Above	331	82 %	353	86 %	334	83 %
Advanced	48	12 %	48	12 %	54	13 %
Proficient	283	70 %	305	74 %	280	69 %
Partially Proficient	55	14 %	41	10 %	52	13 %
Unsatisfactory	19	5 %	16	4 %	15	4 %
Not Tested	0	0 %	1	0 %	2	0 %
Number of Students	405		411		403	



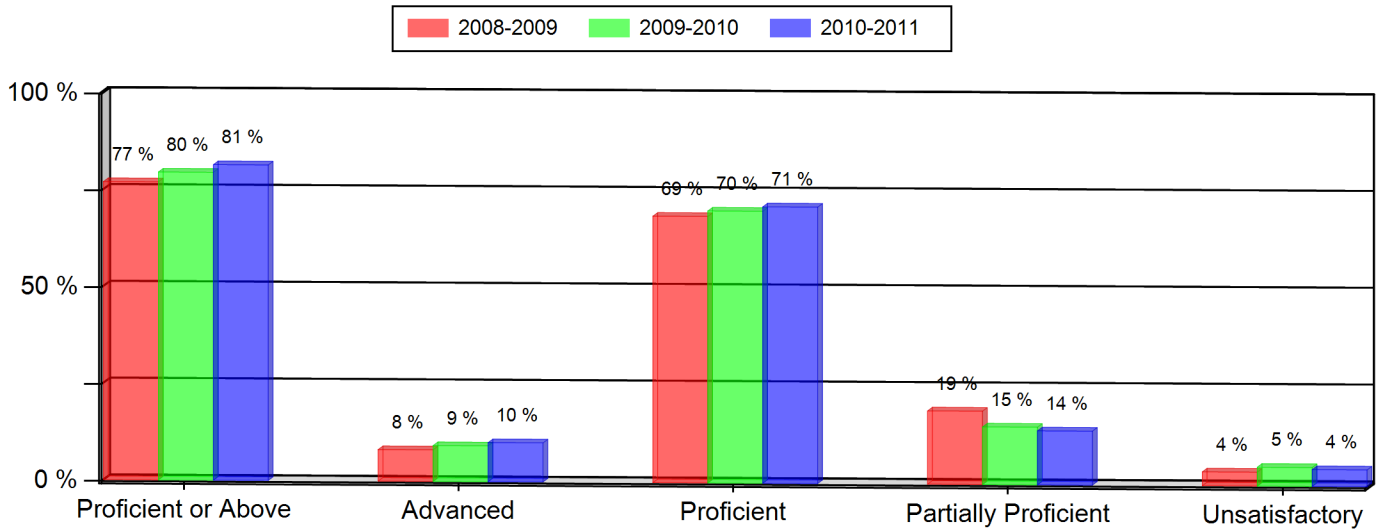
Notes:

- \* Indicates statistically significant change from previous year.
- \*\* Data not presented as fewer than 16 students are represented.
- Grades 5, 8, and 10 CSAP Science scores can only be displayed beginning with the 2007-08 school year, due to revised Science standards and CSAP scale scores in 2008.
- Federal changes to the 2010-11 collection of student race and ethnicity definitions may impact the trending of race and ethnicity data on this report between the school years 2009-10 and 2010-11.

**Summit Ridge Middle School**  
Colorado Student Assessment Program (CSAP)  
2010-2011

**READING (All Students)**

Grade 8 --- All Students	2008-2009		2009-2010		2010-2011	
	Num.	Per.	Num.	Per.	Num.	Per.
Proficient or Above	321	77 %	326	80 %	339	81 %
Advanced	34	8 %	38	9 %	42	10 %
Proficient	287	69 %	288	70 %	297	71 %
Partially Proficient	79	19 %	61	15 %	58	14 %
Unsatisfactory	15	4 %	20	5 %	18	4 %
Not Tested	2	0 %	3	1 %	1	0 %
Number of Students	417		410		416	



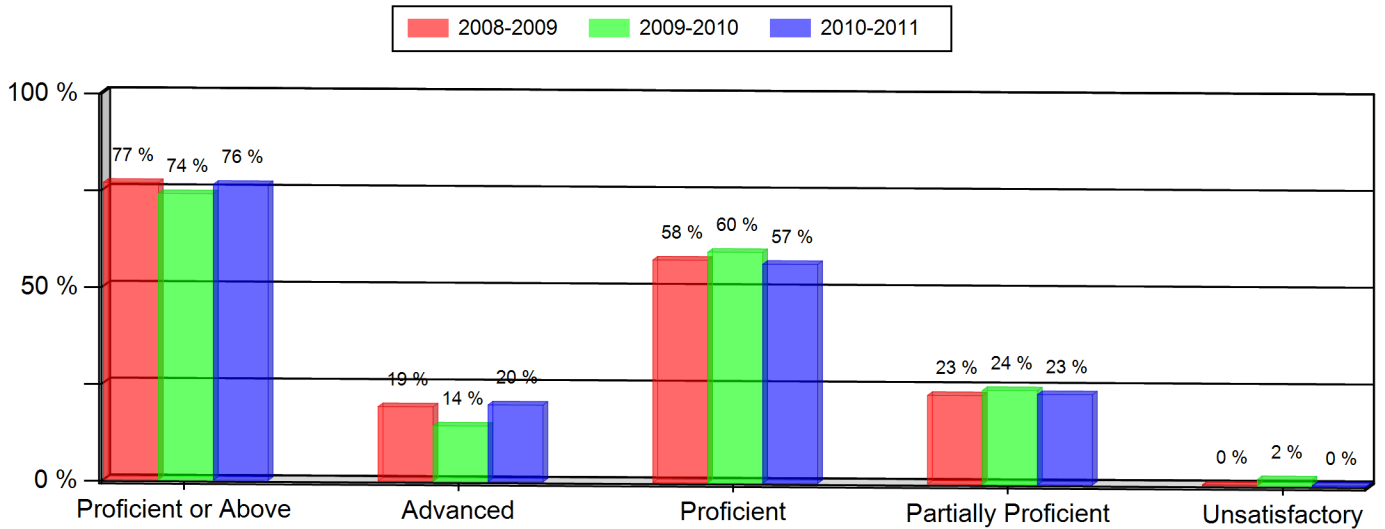
Notes:

- \* Indicates statistically significant change from previous year.
- \*\* Data not presented as fewer than 16 students are represented.
- Grades 5, 8, and 10 CSAP Science scores can only be displayed beginning with the 2007-08 school year, due to revised Science standards and CSAP scale scores in 2008.
- Federal changes to the 2010-11 collection of student race and ethnicity definitions may impact the trending of race and ethnicity data on this report between the school years 2009-10 and 2010-11.

**Summit Ridge Middle School**  
Colorado Student Assessment Program (CSAP)  
2010-2011

**WRITING (All Students)**

Grade 7 --- All Students	2008-2009		2009-2010		2010-2011	
	Num.	Per.	Num.	Per.	Num.	Per.
Proficient or Above	311	77 %	304	74 %	308	76 %
Advanced	78	19 %	59	14 %	80	20 %
Proficient	233	58 %	245	60 %	228	57 %
Partially Proficient	93	23 %	100	24 %	94	23 %
Unsatisfactory	1	0 %	7	2 %	0	0 %
Not Tested	0	0 %	0	0 %	1	0 %
Number of Students	405		411		403	



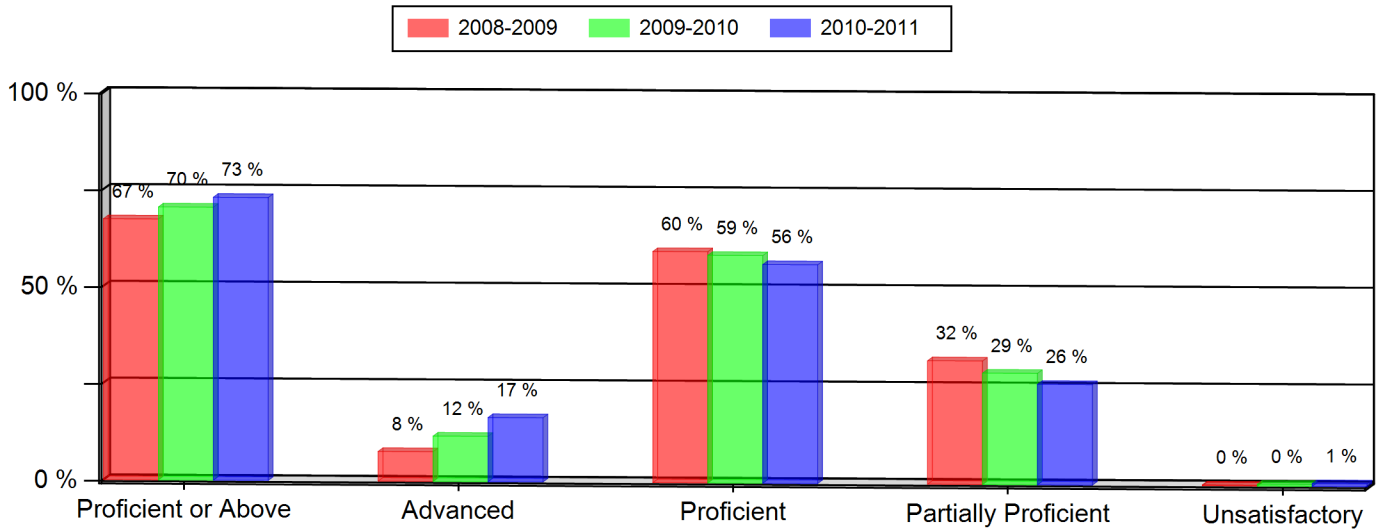
Notes:

- \* Indicates statistically significant change from previous year.
- \*\* Data not presented as fewer than 16 students are represented.
- Grades 5, 8, and 10 CSAP Science scores can only be displayed beginning with the 2007-08 school year, due to revised Science standards and CSAP scale scores in 2008.
- Federal changes to the 2010-11 collection of student race and ethnicity definitions may impact the trending of race and ethnicity data on this report between the school years 2009-10 and 2010-11.

**Summit Ridge Middle School**  
Colorado Student Assessment Program (CSAP)  
2010-2011

**WRITING (All Students)**

Grade 8 --- All Students	2008-2009		2009-2010		2010-2011	
	Num.	Per.	Num.	Per.	Num.	Per.
Proficient or Above	281	67 %	289	70 %	304	73 %
Advanced	32	8 %	48	12 %	69	17 %
Proficient	249	60 %	241	59 %	235	56 %
Partially Proficient	133	32 %	118	29 %	108	26 %
Unsatisfactory	1	0 %	2	0 %	3	1 %
Not Tested	2	0 %	1	0 %	1	0 %
Number of Students	417		410		416	



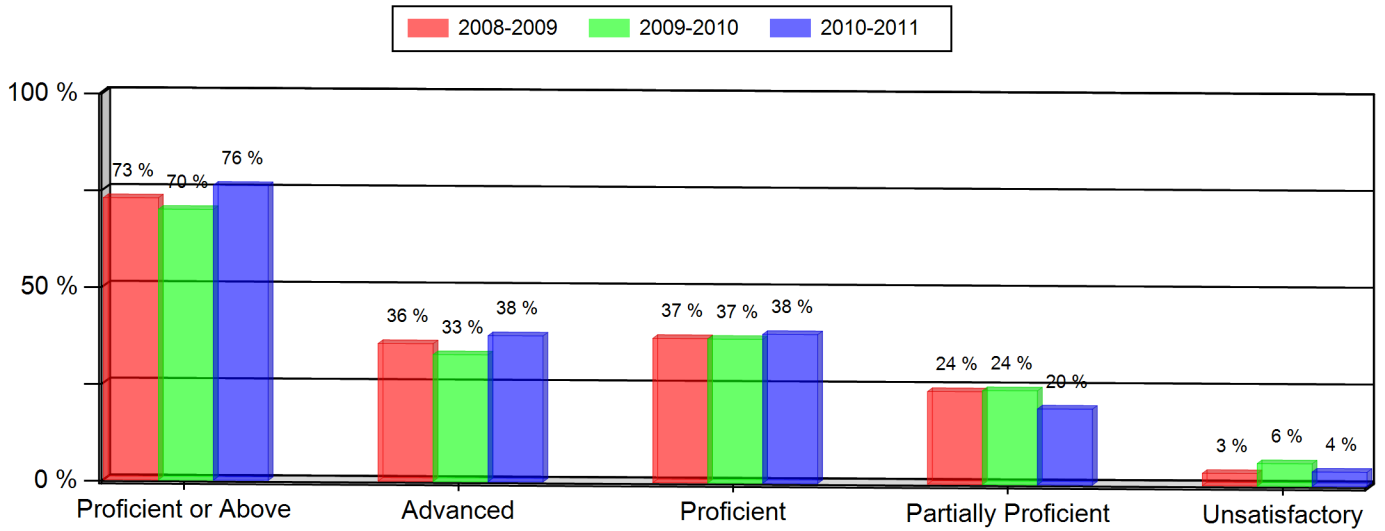
Notes:

- \* Indicates statistically significant change from previous year.
- \*\* Data not presented as fewer than 16 students are represented.
- Grades 5, 8, and 10 CSAP Science scores can only be displayed beginning with the 2007-08 school year, due to revised Science standards and CSAP scale scores in 2008.
- Federal changes to the 2010-11 collection of student race and ethnicity definitions may impact the trending of race and ethnicity data on this report between the school years 2009-10 and 2010-11.

**Summit Ridge Middle School**  
Colorado Student Assessment Program (CSAP)  
2010-2011

**MATH (All Students)**

Grade 7 --- All Students	2008-2009		2009-2010		2010-2011	
	Num.	Per.	Num.	Per.	Num.	Per.
Proficient or Above	295	73 % *	288	70 %	307	76 % *
Advanced	144	36 %	135	33 %	152	38 %
Proficient	151	37 %	153	37 %	155	38 %
Partially Proficient	97	24 %	100	24 %	79	20 %
Unsatisfactory	13	3 %	24	6 %	15	4 %
Not Tested	0	0 %	0	0 %	2	0 %
Number of Students	405		412		403	



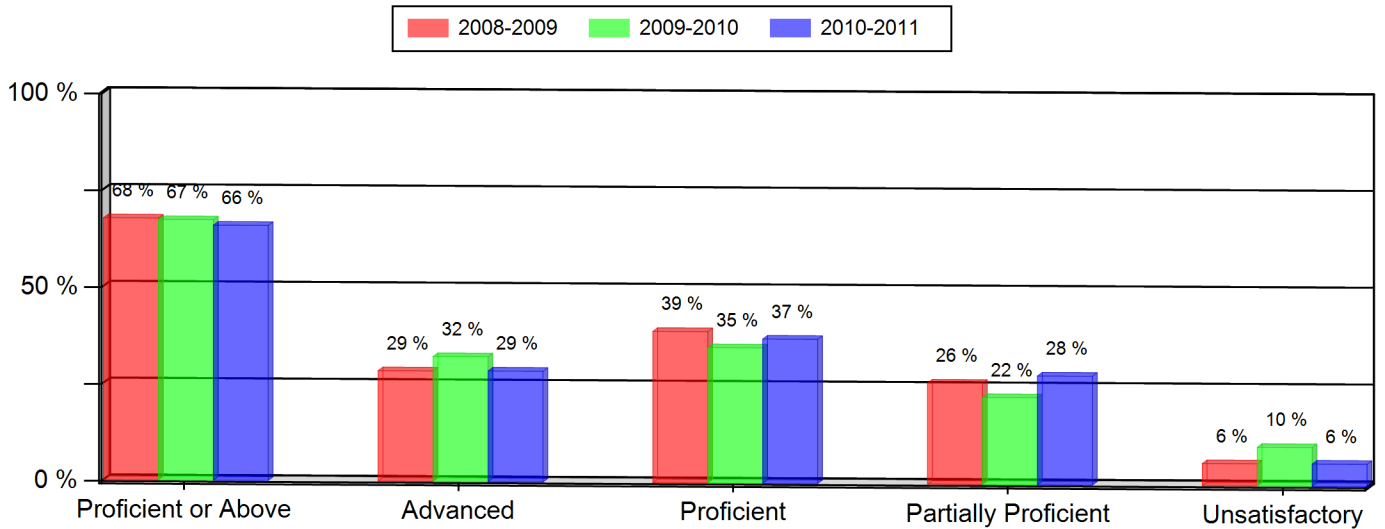
Notes:

- \* Indicates statistically significant change from previous year.
- \*\* Data not presented as fewer than 16 students are represented.
- Grades 5, 8, and 10 CSAP Science scores can only be displayed beginning with the 2007-08 school year, due to revised Science standards and CSAP scale scores in 2008.
- Federal changes to the 2010-11 collection of student race and ethnicity definitions may impact the trending of race and ethnicity data on this report between the school years 2009-10 and 2010-11.

**Summit Ridge Middle School**  
Colorado Student Assessment Program (CSAP)  
2010-2011

**MATH (All Students)**

Grade 8 --- All Students	2008-2009		2009-2010		2010-2011	
	Num.	Per.	Num.	Per.	Num.	Per.
Proficient or Above	282	68 %	275	67 %	274	66 %
Advanced	119	29 %	132	32 %	119	29 %
Proficient	163	39 %	143	35 %	155	37 %
Partially Proficient	109	26 %	92	22 %	117	28 %
Unsatisfactory	24	6 %	41	10 %	24	6 %
Not Tested	2	0 %	1	0 %	1	0 %
Number of Students	417		409		416	



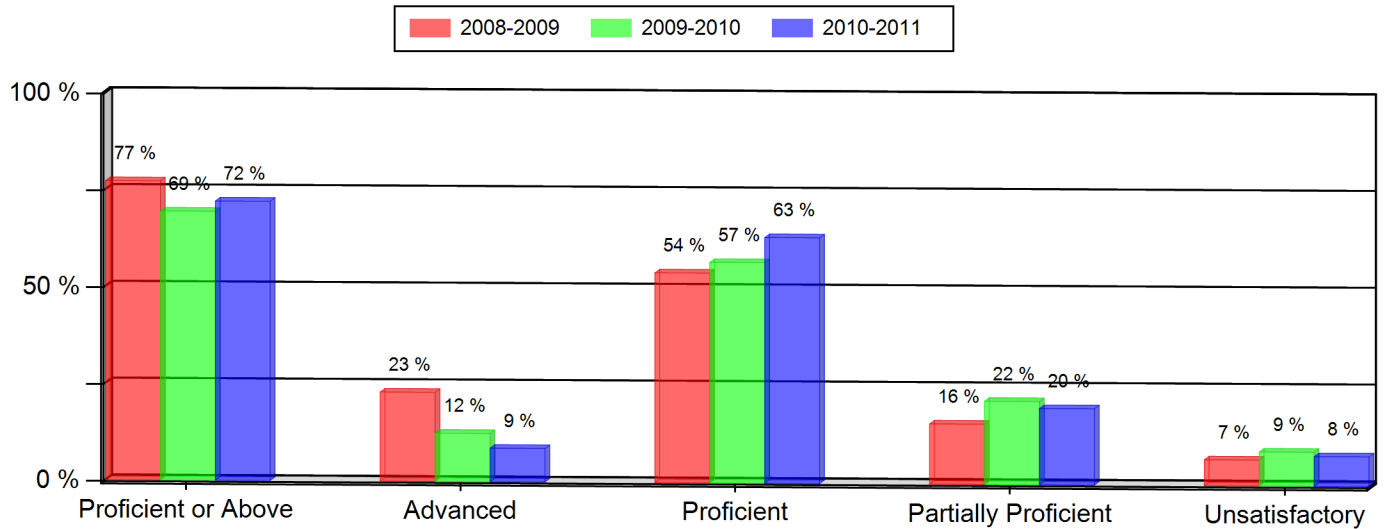
Notes:

- \* Indicates statistically significant change from previous year.
- \*\* Data not presented as fewer than 16 students are represented.
- Grades 5, 8, and 10 CSAP Science scores can only be displayed beginning with the 2007-08 school year, due to revised Science standards and CSAP scale scores in 2008.
- Federal changes to the 2010-11 collection of student race and ethnicity definitions may impact the trending of race and ethnicity data on this report between the school years 2009-10 and 2010-11.

**Summit Ridge Middle School**  
Colorado Student Assessment Program (CSAP)  
2010-2011

**SCIENCE (All Students)**

Grade 8 --- All Students	2008-2009		2009-2010		2010-2011	
	Num.	Per.	Num.	Per.	Num.	Per.
Proficient or Above	322	77 %	284	69 % *	300	72 %
Advanced	96	23 %	51	12 %	36	9 %
Proficient	226	54 %	233	57 %	264	63 %
Partially Proficient	65	16 %	88	22 %	82	20 %
Unsatisfactory	28	7 %	36	9 %	32	8 %
Not Tested	2	0 %	1	0 %	2	0 %
Number of Students	417		409		416	



Notes:

- \* Indicates statistically significant change from previous year.
- \*\* Data not presented as fewer than 16 students are represented.
- Grades 5, 8, and 10 CSAP Science scores can only be displayed beginning with the 2007-08 school year, due to revised Science standards and CSAP scale scores in 2008.
- Federal changes to the 2010-11 collection of student race and ethnicity definitions may impact the trending of race and ethnicity data on this report between the school years 2009-10 and 2010-11.