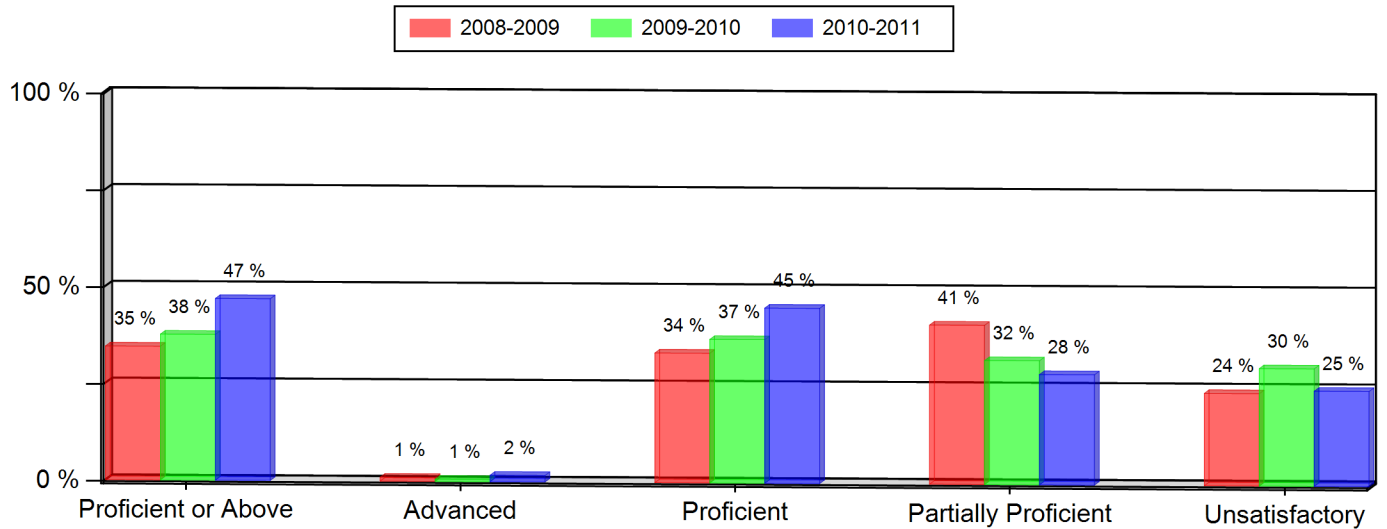


Wheat Ridge Middle School
Colorado Student Assessment Program (CSAP)
2010-2011

READING (All Students)

Grade 7 --- All Students	2008-2009		2009-2010		2010-2011	
	Num.	Per.	Num.	Per.	Num.	Per.
Proficient or Above	68	35 %	67	38 %	84	47 % *
Advanced	2	1 %	1	1 %	3	2 %
Proficient	66	34 %	66	37 %	81	45 %
Partially Proficient	81	41 %	57	32 %	51	28 %
Unsatisfactory	47	24 %	54	30 %	44	25 %
Not Tested	1	1 %	0	0 %	0	0 %
Number of Students	197		178		179	



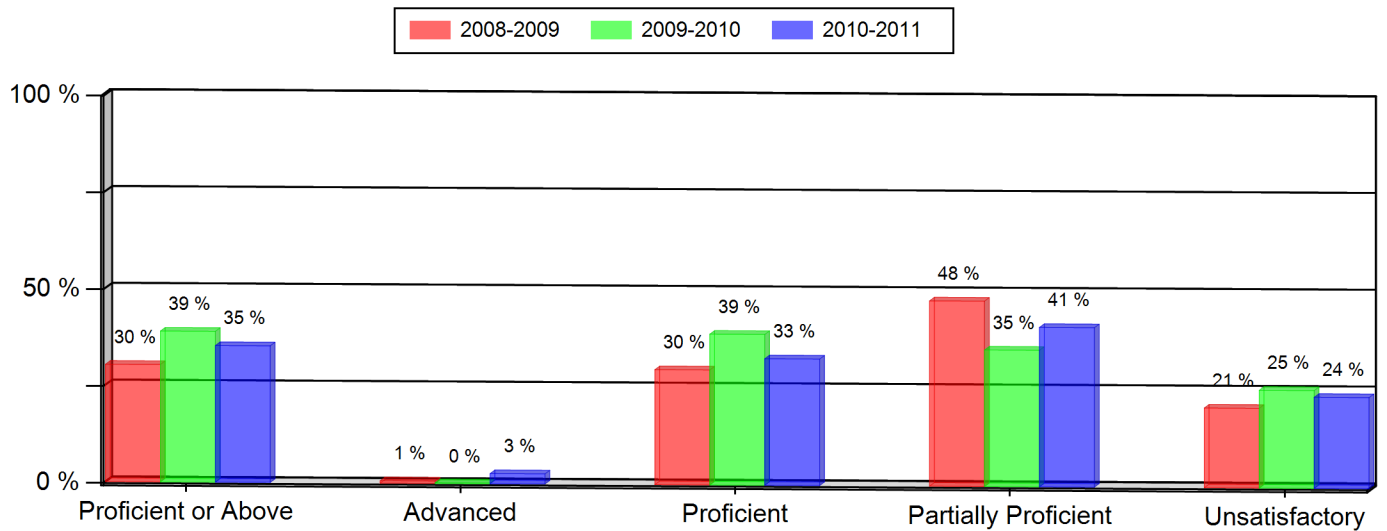
Notes:

- * Indicates statistically significant change from previous year.
- ** Data not presented as fewer than 16 students are represented.
- Grades 5, 8, and 10 CSAP Science scores can only be displayed beginning with the 2007-08 school year, due to revised Science standards and CSAP scale scores in 2008.
- Federal changes to the 2010-11 collection of student race and ethnicity definitions may impact the trending of race and ethnicity data on this report between the school years 2009-10 and 2010-11.

Wheat Ridge Middle School
Colorado Student Assessment Program (CSAP)
2010-2011

READING (All Students)

Grade 8 --- All Students	2008-2009		2009-2010		2010-2011	
	Num.	Per.	Num.	Per.	Num.	Per.
Proficient or Above	50	30 % *	74	39 % *	54	35 %
Advanced	1	1 %	0	0 %	4	3 %
Proficient	49	30 %	74	39 %	50	33 %
Partially Proficient	79	48 %	67	35 %	63	41 %
Unsatisfactory	34	21 %	48	25 %	36	24 %
Not Tested	2	1 %	1	1 %	0	0 %
Number of Students	165		190		153	



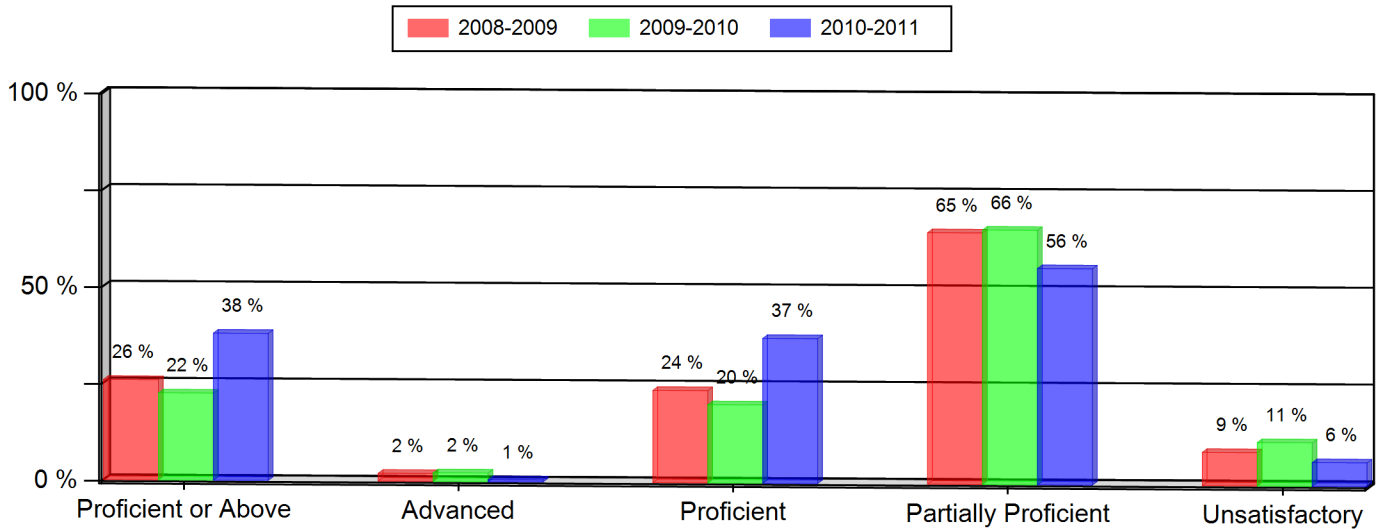
Notes:

- * Indicates statistically significant change from previous year.
- ** Data not presented as fewer than 16 students are represented.
- Grades 5, 8, and 10 CSAP Science scores can only be displayed beginning with the 2007-08 school year, due to revised Science standards and CSAP scale scores in 2008.
- Federal changes to the 2010-11 collection of student race and ethnicity definitions may impact the trending of race and ethnicity data on this report between the school years 2009-10 and 2010-11.

Wheat Ridge Middle School
Colorado Student Assessment Program (CSAP)
2010-2011

WRITING (All Students)

Grade 7 --- All Students	2008-2009		2009-2010		2010-2011	
	Num.	Per.	Num.	Per.	Num.	Per.
Proficient or Above	51	26 %	40	22 %	68	38 % *
Advanced	4	2 %	4	2 %	1	1 %
Proficient	47	24 %	36	20 %	67	37 %
Partially Proficient	128	65 %	117	66 %	100	56 %
Unsatisfactory	17	9 %	20	11 %	11	6 %
Not Tested	1	1 %	1	1 %	0	0 %
Number of Students	197		178		179	



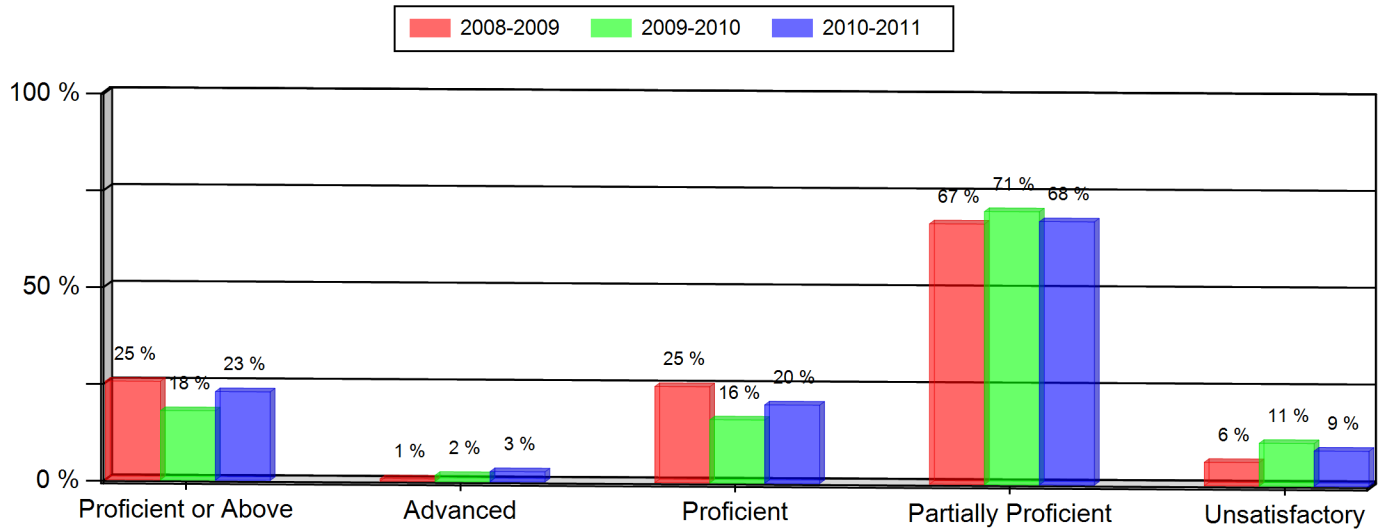
Notes:

- * Indicates statistically significant change from previous year.
- ** Data not presented as fewer than 16 students are represented.
- Grades 5, 8, and 10 CSAP Science scores can only be displayed beginning with the 2007-08 school year, due to revised Science standards and CSAP scale scores in 2008.
- Federal changes to the 2010-11 collection of student race and ethnicity definitions may impact the trending of race and ethnicity data on this report between the school years 2009-10 and 2010-11.

Wheat Ridge Middle School
Colorado Student Assessment Program (CSAP)
2010-2011

WRITING (All Students)

Grade 8 --- All Students	2008-2009		2009-2010		2010-2011	
	Num.	Per.	Num.	Per.	Num.	Per.
Proficient or Above	42	25 % *	34	18 % *	35	23 %
Advanced	1	1 %	3	2 %	4	3 %
Proficient	41	25 %	31	16 %	31	20 %
Partially Proficient	111	67 %	134	71 %	104	68 %
Unsatisfactory	10	6 %	21	11 %	14	9 %
Not Tested	2	1 %	1	1 %	0	0 %
Number of Students	165		190		153	



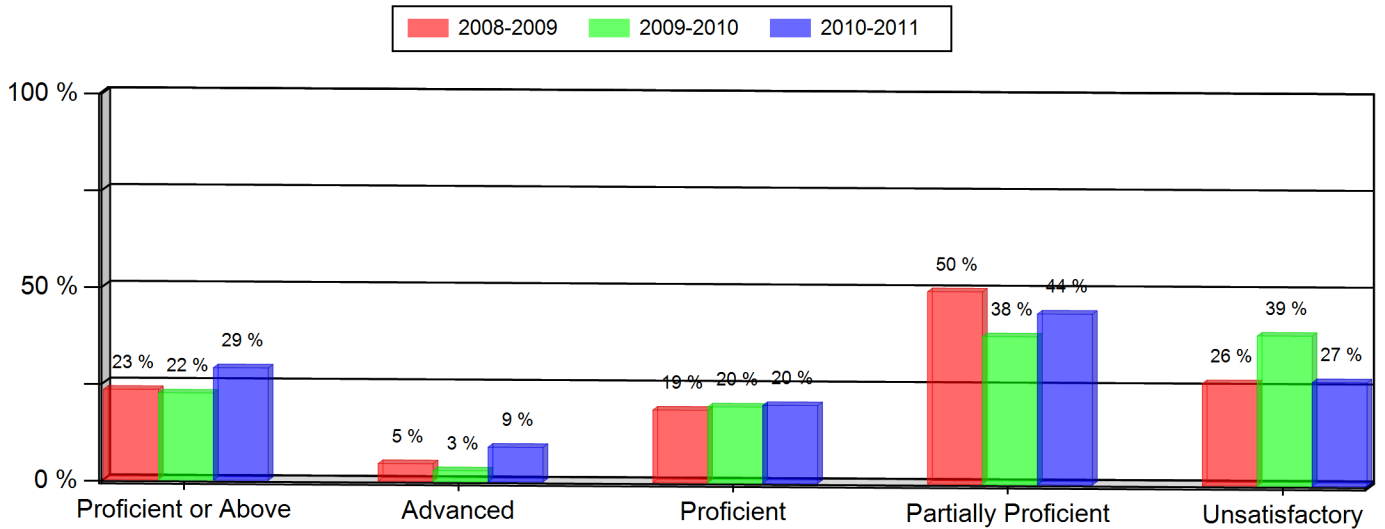
Notes:

- * Indicates statistically significant change from previous year.
- ** Data not presented as fewer than 16 students are represented.
- Grades 5, 8, and 10 CSAP Science scores can only be displayed beginning with the 2007-08 school year, due to revised Science standards and CSAP scale scores in 2008.
- Federal changes to the 2010-11 collection of student race and ethnicity definitions may impact the trending of race and ethnicity data on this report between the school years 2009-10 and 2010-11.

Wheat Ridge Middle School
Colorado Student Assessment Program (CSAP)
2010-2011

MATH (All Students)

Grade 7 --- All Students	2008-2009		2009-2010		2010-2011	
	Num.	Per.	Num.	Per.	Num.	Per.
Proficient or Above	46	23 %	40	22 %	52	29 %
Advanced	9	5 %	5	3 %	16	9 %
Proficient	37	19 %	35	20 %	36	20 %
Partially Proficient	98	50 %	68	38 %	79	44 %
Unsatisfactory	52	26 %	69	39 %	48	27 %
Not Tested	1	1 %	1	1 %	0	0 %
Number of Students	197		178		179	



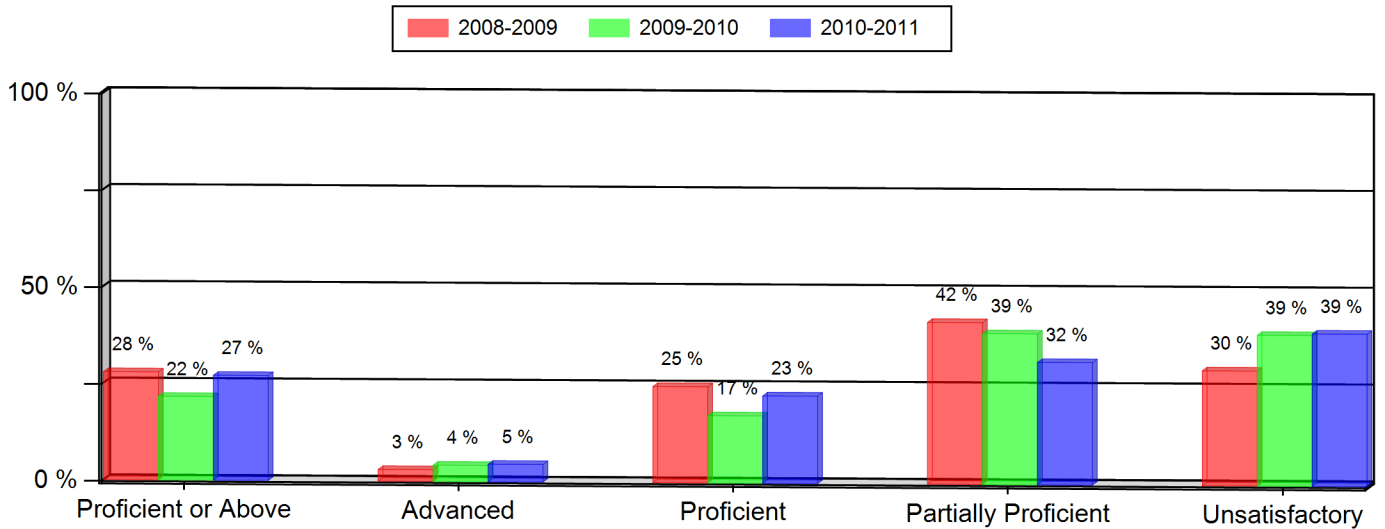
Notes:

- * Indicates statistically significant change from previous year.
- ** Data not presented as fewer than 16 students are represented.
- Grades 5, 8, and 10 CSAP Science scores can only be displayed beginning with the 2007-08 school year, due to revised Science standards and CSAP scale scores in 2008.
- Federal changes to the 2010-11 collection of student race and ethnicity definitions may impact the trending of race and ethnicity data on this report between the school years 2009-10 and 2010-11.

Wheat Ridge Middle School
Colorado Student Assessment Program (CSAP)
2010-2011

MATH (All Students)

Grade 8 --- All Students	2008-2009		2009-2010		2010-2011	
	Num.	Per.	Num.	Per.	Num.	Per.
Proficient or Above	46	28 %	41	22 %	42	27 %
Advanced	5	3 %	8	4 %	7	5 %
Proficient	41	25 %	33	17 %	35	23 %
Partially Proficient	69	42 %	74	39 %	49	32 %
Unsatisfactory	49	30 %	74	39 %	61	39 %
Not Tested	1	1 %	1	1 %	3	2 %
Number of Students	165		190		155	



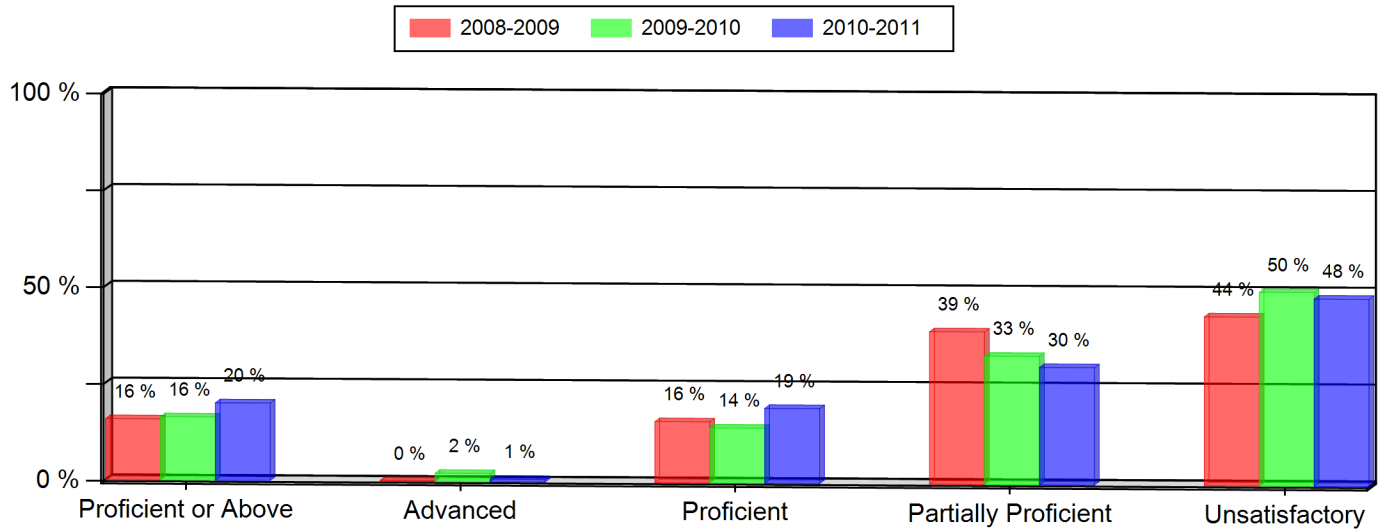
Notes:

- * Indicates statistically significant change from previous year.
- ** Data not presented as fewer than 16 students are represented.
- Grades 5, 8, and 10 CSAP Science scores can only be displayed beginning with the 2007-08 school year, due to revised Science standards and CSAP scale scores in 2008.
- Federal changes to the 2010-11 collection of student race and ethnicity definitions may impact the trending of race and ethnicity data on this report between the school years 2009-10 and 2010-11.

Wheat Ridge Middle School
Colorado Student Assessment Program (CSAP)
2010-2011

SCIENCE (All Students)

Grade 8 --- All Students	2008-2009		2009-2010		2010-2011	
	Num.	Per.	Num.	Per.	Num.	Per.
Proficient or Above	26	16 %	31	16 %	31	20 %
Advanced	0	0 %	4	2 %	1	1 %
Proficient	26	16 %	27	14 %	30	19 %
Partially Proficient	65	39 %	63	33 %	47	30 %
Unsatisfactory	72	44 %	95	50 %	75	48 %
Not Tested	2	1 %	1	1 %	2	1 %
Number of Students	165		190		155	



Notes:

- * Indicates statistically significant change from previous year.
- ** Data not presented as fewer than 16 students are represented.
- Grades 5, 8, and 10 CSAP Science scores can only be displayed beginning with the 2007-08 school year, due to revised Science standards and CSAP scale scores in 2008.
- Federal changes to the 2010-11 collection of student race and ethnicity definitions may impact the trending of race and ethnicity data on this report between the school years 2009-10 and 2010-11.