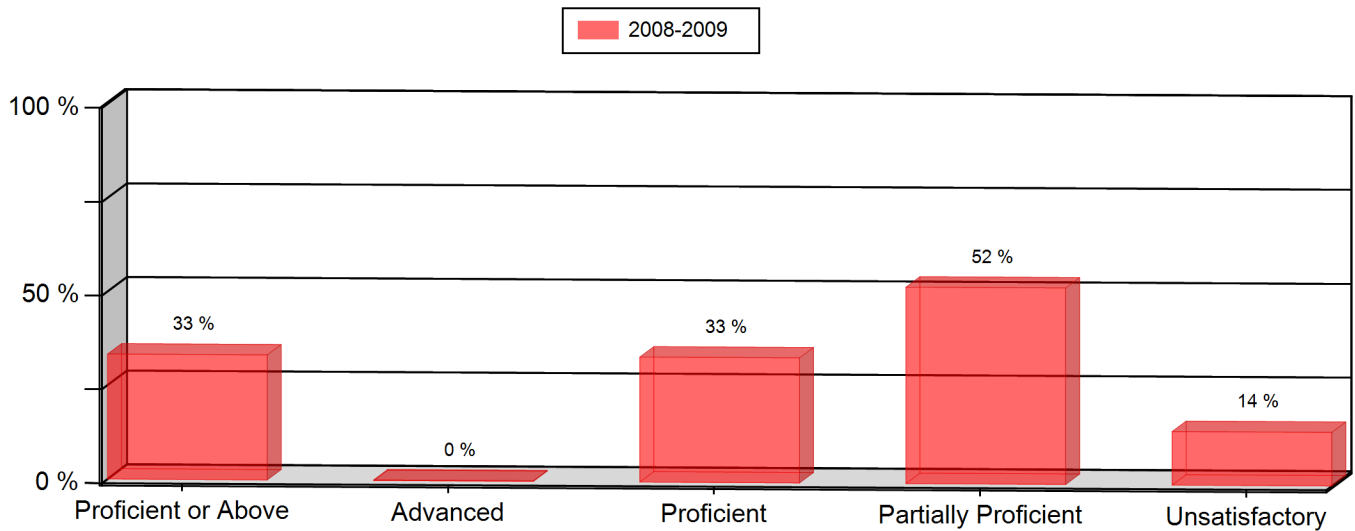


**READING (All Students)**

Grade 9 --- All Students	2008-2009		2009-2010		2010-2011	
	Num.	Per.	Num.	Per.	Num.	Per.
Proficient or Above	7	33 %				
Advanced	0	0 %				
Proficient	7	33 %				
Partially Proficient	11	52 %				
Unsatisfactory	3	14 %				
Not Tested	0	0 %				
Number of Students	21		4**		4**	



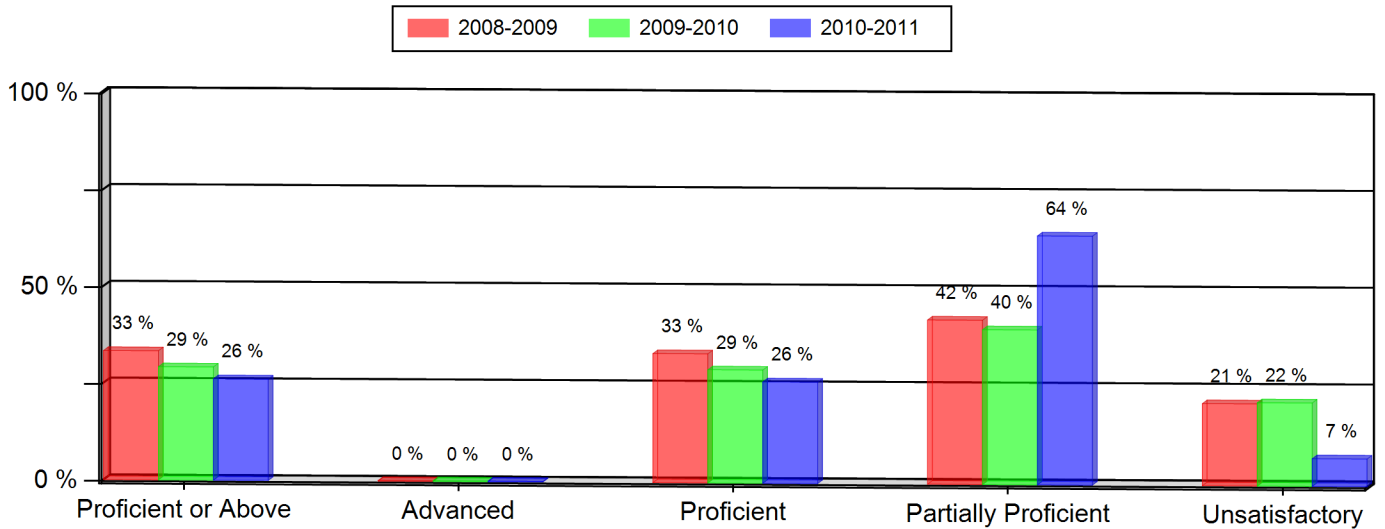
Notes:

- \* Indicates statistically significant change from previous year.
- \*\* Data not presented as fewer than 16 students are represented.
- Grades 5, 8, and 10 CSAP Science scores can only be displayed beginning with the 2007-08 school year, due to revised Science standards and CSAP scale scores in 2008.
- Federal changes to the 2010-11 collection of student race and ethnicity definitions may impact the trending of race and ethnicity data on this report between the school years 2009-10 and 2010-11.

**Brady Exploration High School**  
Colorado Student Assessment Program (CSAP)  
2010-2011

**READING (All Students)**

Grade 10 --- All Students	2008-2009		2009-2010		2010-2011	
	Num.	Per.	Num.	Per.	Num.	Per.
Proficient or Above	22	33 %	19	29 %	11	26 %
Advanced	0	0 %	0	0 %	0	0 %
Proficient	22	33 %	19	29 %	11	26 %
Partially Proficient	28	42 %	26	40 %	27	64 %
Unsatisfactory	14	21 %	14	22 %	3	7 %
Not Tested	2	3 %	6	9 %	1	2 %
Number of Students	66		65		42	

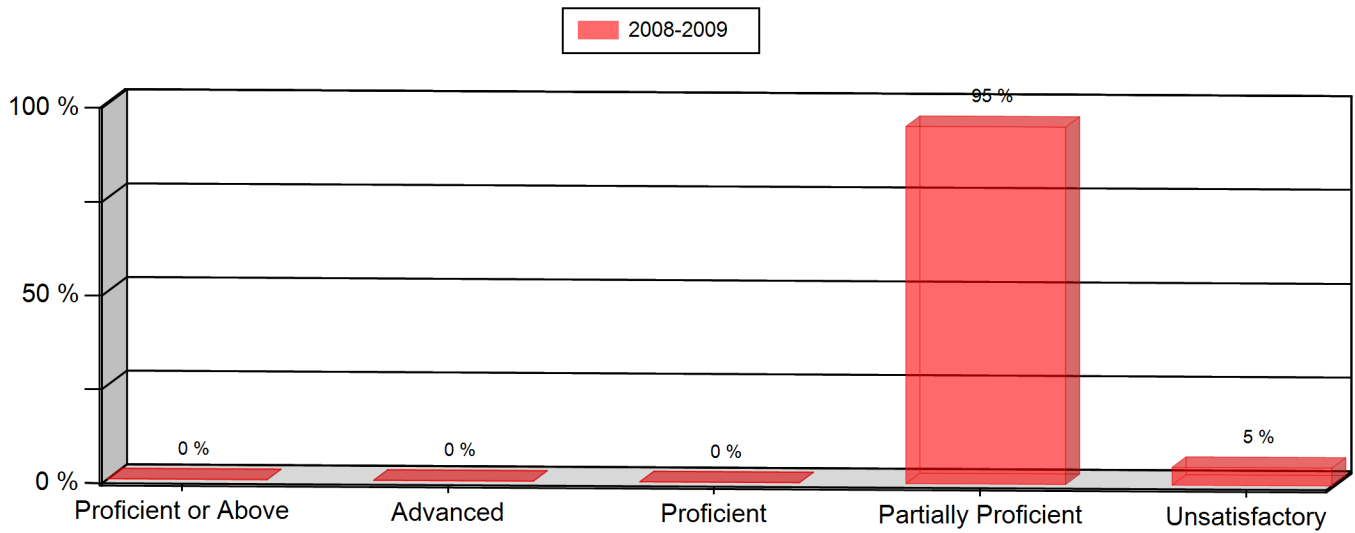


Notes:

- \* Indicates statistically significant change from previous year.
- \*\* Data not presented as fewer than 16 students are represented.
- Grades 5, 8, and 10 CSAP Science scores can only be displayed beginning with the 2007-08 school year, due to revised Science standards and CSAP scale scores in 2008.
- Federal changes to the 2010-11 collection of student race and ethnicity definitions may impact the trending of race and ethnicity data on this report between the school years 2009-10 and 2010-11.

**WRITING (All Students)**

Grade 9 --- All Students	2008-2009		2009-2010		2010-2011	
	Num.	Per.	Num.	Per.	Num.	Per.
Proficient or Above	0	0 %				
Advanced	0	0 %				
Proficient	0	0 %				
Partially Proficient	20	95 %				
Unsatisfactory	1	5 %				
Not Tested	0	0 %				
Number of Students	21		4**		4**	



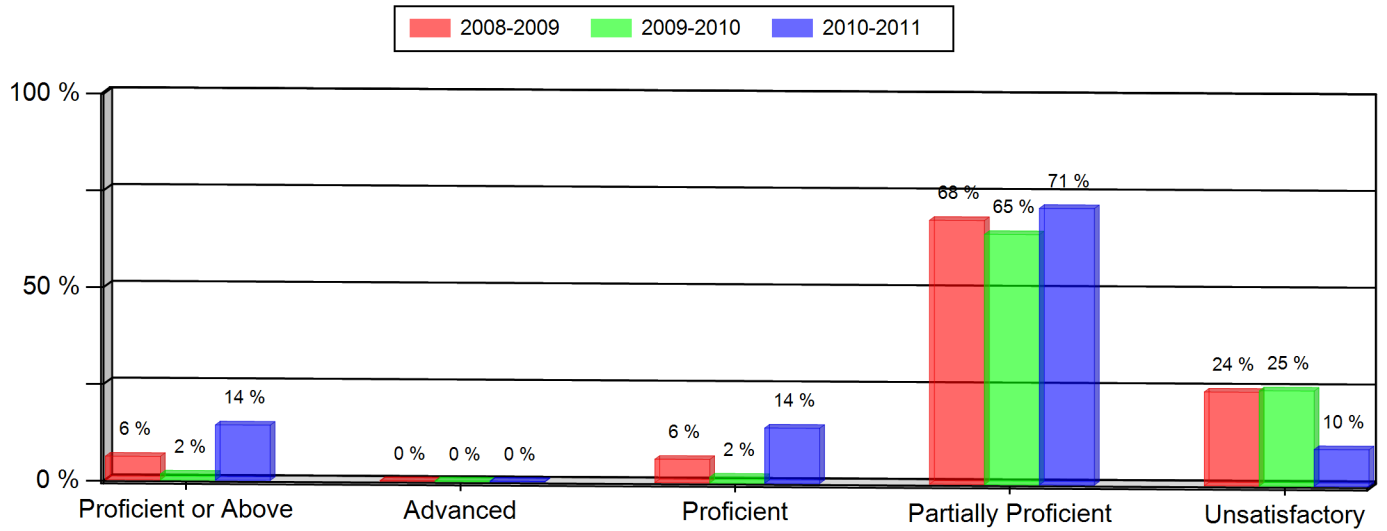
Notes:

- \* Indicates statistically significant change from previous year.
- \*\* Data not presented as fewer than 16 students are represented.
- Grades 5, 8, and 10 CSAP Science scores can only be displayed beginning with the 2007-08 school year, due to revised Science standards and CSAP scale scores in 2008.
- Federal changes to the 2010-11 collection of student race and ethnicity definitions may impact the trending of race and ethnicity data on this report between the school years 2009-10 and 2010-11.

**Brady Exploration High School**  
Colorado Student Assessment Program (CSAP)  
2010-2011

**WRITING (All Students)**

Grade 10 --- All Students	2008-2009		2009-2010		2010-2011	
	Num.	Per.	Num.	Per.	Num.	Per.
Proficient or Above	4	6 %	1	2 %	6	14 % *
Advanced	0	0 %	0	0 %	0	0 %
Proficient	4	6 %	1	2 %	6	14 %
Partially Proficient	45	68 %	42	65 %	30	71 %
Unsatisfactory	16	24 %	16	25 %	4	10 %
Not Tested	1	2 %	6	9 %	2	5 %
Number of Students	66		65		42	

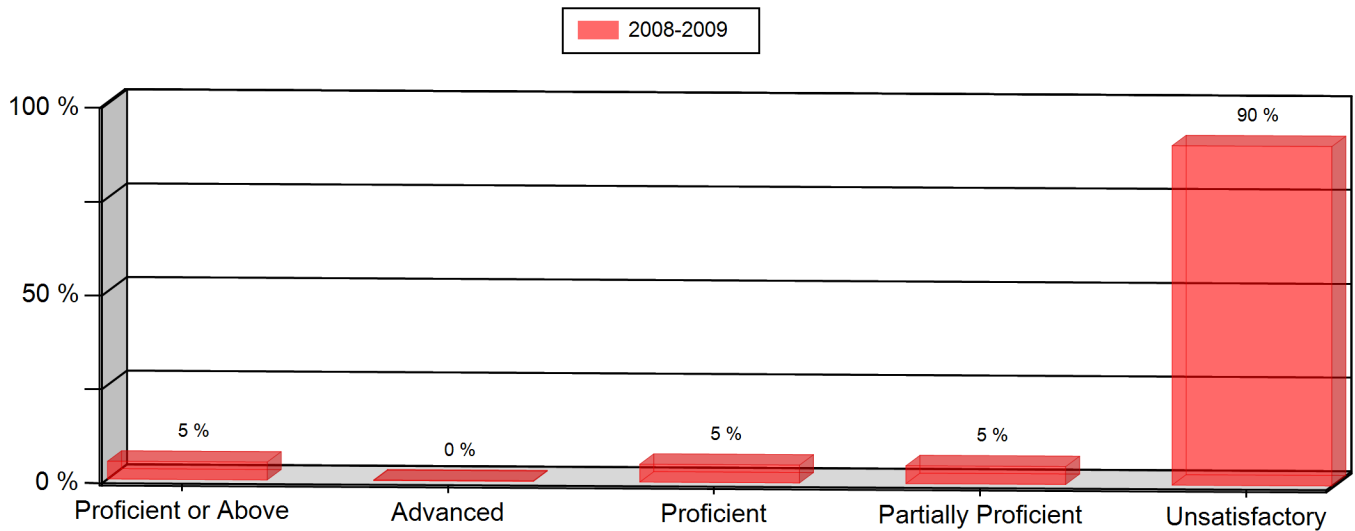


Notes:

- \* Indicates statistically significant change from previous year.
- \*\* Data not presented as fewer than 16 students are represented.
- Grades 5, 8, and 10 CSAP Science scores can only be displayed beginning with the 2007-08 school year, due to revised Science standards and CSAP scale scores in 2008.
- Federal changes to the 2010-11 collection of student race and ethnicity definitions may impact the trending of race and ethnicity data on this report between the school years 2009-10 and 2010-11.

**MATH (All Students)**

Grade 9 --- All Students	2008-2009		2009-2010		2010-2011	
	Num.	Per.	Num.	Per.	Num.	Per.
Proficient or Above	1	5 %				
Advanced	0	0 %				
Proficient	1	5 %				
Partially Proficient	1	5 %				
Unsatisfactory	19	90 %				
Not Tested	0	0 %				
Number of Students	21		4**		4**	



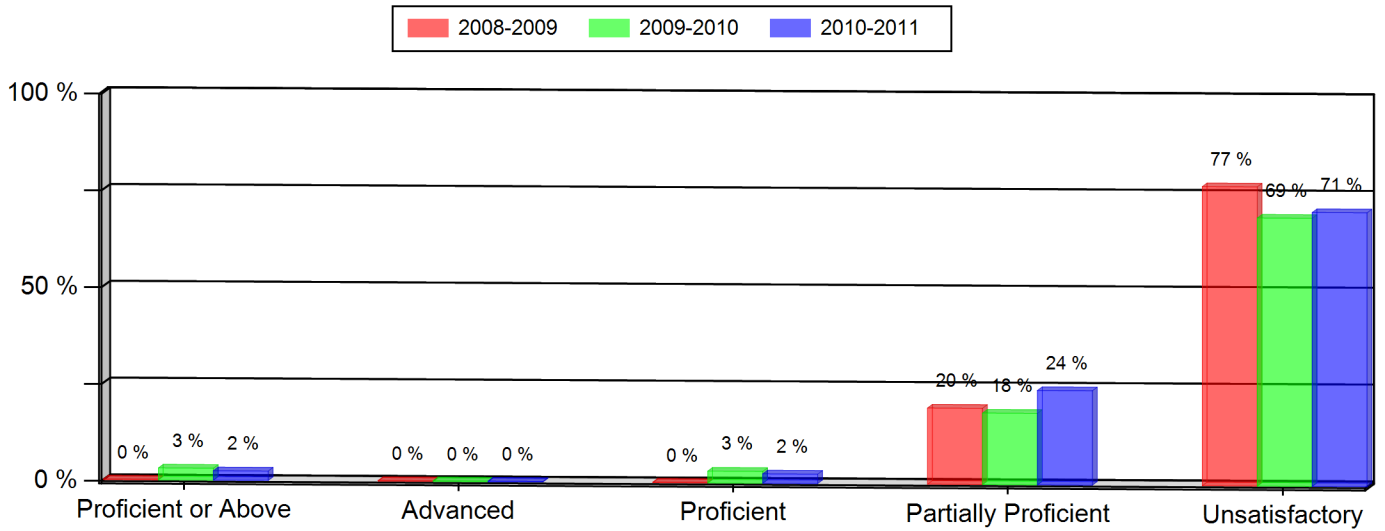
Notes:

- \* Indicates statistically significant change from previous year.
- \*\* Data not presented as fewer than 16 students are represented.
- Grades 5, 8, and 10 CSAP Science scores can only be displayed beginning with the 2007-08 school year, due to revised Science standards and CSAP scale scores in 2008.
- Federal changes to the 2010-11 collection of student race and ethnicity definitions may impact the trending of race and ethnicity data on this report between the school years 2009-10 and 2010-11.

**Brady Exploration High School**  
Colorado Student Assessment Program (CSAP)  
2010-2011

**MATH (All Students)**

Grade 10 --- All Students	2008-2009		2009-2010		2010-2011	
	Num.	Per.	Num.	Per.	Num.	Per.
Proficient or Above	0	0 % *	2	3 %	1	2 %
Advanced	0	0 %	0	0 %	0	0 %
Proficient	0	0 %	2	3 %	1	2 %
Partially Proficient	13	20 %	12	18 %	10	24 %
Unsatisfactory	51	77 %	45	69 %	29	71 %
Not Tested	2	3 %	6	9 %	1	2 %
Number of Students	66		65		41	



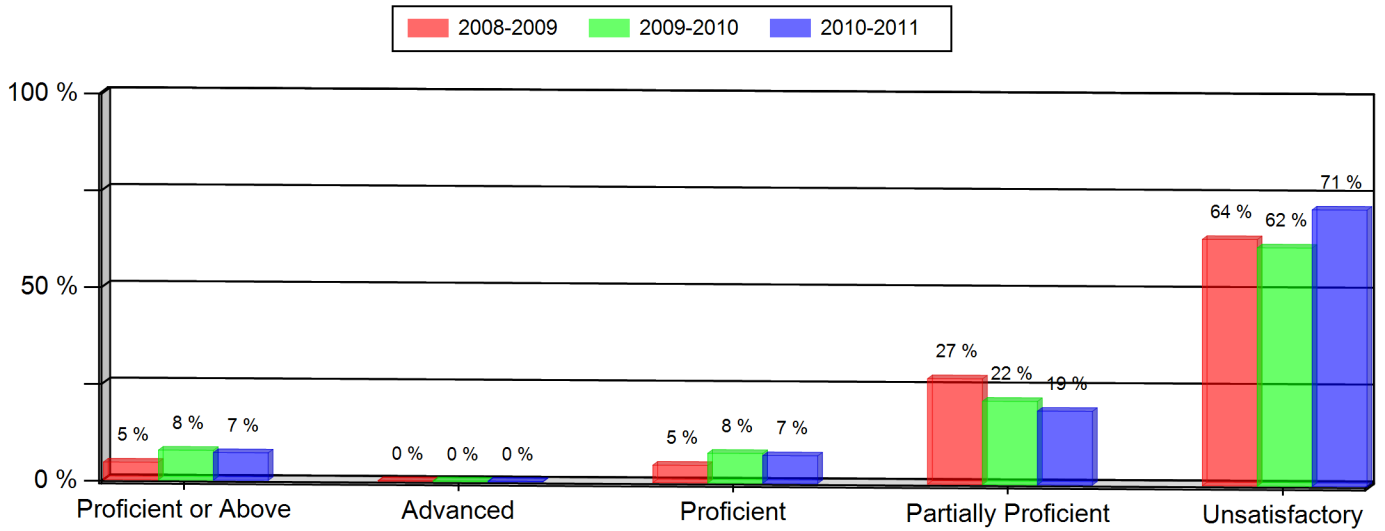
Notes:

- \* Indicates statistically significant change from previous year.
- \*\* Data not presented as fewer than 16 students are represented.
- Grades 5, 8, and 10 CSAP Science scores can only be displayed beginning with the 2007-08 school year, due to revised Science standards and CSAP scale scores in 2008.
- Federal changes to the 2010-11 collection of student race and ethnicity definitions may impact the trending of race and ethnicity data on this report between the school years 2009-10 and 2010-11.

**Brady Exploration High School**  
Colorado Student Assessment Program (CSAP)  
2010-2011

**SCIENCE (All Students)**

Grade 10 --- All Students	2008-2009		2009-2010		2010-2011	
	Num.	Per.	Num.	Per.	Num.	Per.
Proficient or Above	3	5 %	5	8 %	3	7 %
Advanced	0	0 %	0	0 %	0	0 %
Proficient	3	5 %	5	8 %	3	7 %
Partially Proficient	18	27 %	14	22 %	8	19 %
Unsatisfactory	42	64 %	40	62 %	30	71 %
Not Tested	3	5 %	6	9 %	1	2 %
Number of Students	66		65		42	



Notes:

- \* Indicates statistically significant change from previous year.
- \*\* Data not presented as fewer than 16 students are represented.
- Grades 5, 8, and 10 CSAP Science scores can only be displayed beginning with the 2007-08 school year, due to revised Science standards and CSAP scale scores in 2008.
- Federal changes to the 2010-11 collection of student race and ethnicity definitions may impact the trending of race and ethnicity data on this report between the school years 2009-10 and 2010-11.